

## ARG58309 anti-Bmi 1 antibody

Package: 50 µg  
Store at: -20°C

### Summary

Product Description	Rabbit Polyclonal antibody recognizes Bmi 1
Tested Reactivity	Hu, Ms, Rat
Predict Reactivity	Bov
Tested Application	WB
Host	Rabbit
Clonality	Polyclonal
Isotype	IgG
Target Name	Bmi 1
Species	Human
Immunogen	Synthetic peptide corresponding to a sequence in the middle region of Human Bmi1(135-165aa IEFDDQNRLDRKVNKDKEKSKEEVNDKRYLR), different from the related Mouse sequence by four amino acids.
Conjugation	Un-conjugated
Alternate Names	PCGF4; RNF51; FLV12/BMI1; flvi-2/bmi-1

### Application Instructions

Application table	Application	Dilution
	WB	0.1 - 0.5 µg/ml
Application Note	* The dilutions indicate recommended starting dilutions and the optimal dilutions or concentrations should be determined by the scientist.	

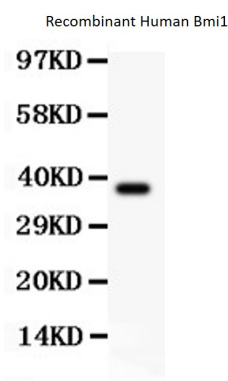
### Properties

Form	Liquid
Purification	Affinity purification with immunogen.
Buffer	0.9% NaCl, 0.2% Na <sub>2</sub> HPO <sub>4</sub> , 0.05% Sodium azide and 5% BSA.
Preservative	0.05% Sodium azide
Stabilizer	5% BSA
Concentration	0.5 mg/ml
Storage instruction	For continuous use, store undiluted antibody at 2-8°C for up to a week. For long-term storage, aliquot and store at -20°C or below. Storage in frost free freezers is not recommended. Avoid repeated freeze/thaw cycles. Suggest spin the vial prior to opening. The antibody solution should be gently mixed before use.
Note	For laboratory research only, not for drug, diagnostic or other use.

Bioinformation

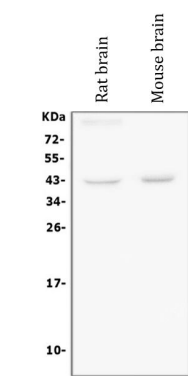
Gene Symbol	BMI1
Gene Full Name	BMI1 proto-oncogene, polycomb ring finger
Background	<p>This gene encodes a ring finger protein that is major component of the polycomb group complex 1 (PRC1). This complex functions through chromatin remodeling as an essential epigenetic repressor of multiple regulatory genes involved in embryonic development and self-renewal in somatic stem cells. This protein also plays a central role in DNA damage repair. This gene is an oncogene and aberrant expression is associated with numerous cancers and is associated with resistance to certain chemotherapies. A pseudogene of this gene is found on chromosome X. Read-through transcription also exists between this gene and the upstream COMM domain containing 3 (COMMD3) gene. [provided by RefSeq, Sep 2015]</p>
Function	<p>Component of a Polycomb group (PcG) multiprotein PRC1-like complex, a complex class required to maintain the transcriptionally repressive state of many genes, including Hox genes, throughout development. PcG PRC1 complex acts via chromatin remodeling and modification of histones; it mediates monoubiquitination of histone H2A 'Lys-119', rendering chromatin heritably changed in its expressibility (PubMed:15386022, PubMed:16359901, PubMed:26151332, PubMed:16714294, PubMed:21772249, PubMed:25355358, PubMed:27827373). The complex composed of RNF2, UB2D3 and BMI1 binds nucleosomes, and has activity only with nucleosomal histone H2A (PubMed:21772249, PubMed:25355358). In the PRC1-like complex, regulates the E3 ubiquitin-protein ligase activity of RNF2/RING2 (PubMed:15386022, PubMed:26151332, PubMed:21772249). [UniProt]</p>
Calculated Mw	37 kDa
Cellular Localization	Nucleus. Cytoplasm. [UniProt]

Images



ARG58309 anti-Bmi 1 antibody WB image

Western blot: 0.5 ng of Recombinant Human Bmi1 protein stained with ARG58309 anti-Bmi 1 antibody at 0.5 µg/ml dilution.



ARG58309 anti-Bmi 1 antibody WB image

Western blot: 50 µg of sample under reducing conditions. Rat brain and Mouse brain lysates stained with ARG58309 anti-Bmi 1 antibody at 0.5 µg/ml dilution, overnight at 4°C.



#### ARG58309 anti-Bmi 1 antibody WB image

Western blot: 50 µg of Rat spleen, 40 µg of HT1080 whole cell lysate and 40 µg of HeLa whole cell lysate stained with ARG58309 anti-Bmi 1 antibody at 0.5 µg/ml dilution.