

ARG58342 anti-CARS / CysRS antibody

Package: 100 µl
Store at: -20°C

Summary

Product Description	Rabbit Polyclonal antibody recognizes CARS / CysRS
Tested Reactivity	Hu, Ms
Tested Application	ICC/IF, WB
Host	Rabbit
Clonality	Polyclonal
Isotype	IgG
Target Name	CARS / CysRS
Species	Human
Immunogen	Recombinant fusion protein corresponding to aa. 469-748 of Human CARS (NP_001742.1).
Conjugation	Un-conjugated
Alternate Names	Cysteine--tRNA ligase, cytoplasmic; Cysteinyl-tRNA synthetase; CYSRS; MGC:11246; EC 6.1.1.16; CARS1; CysRS

Application Instructions

Application table	Application	Dilution
	ICC/IF	1:10 - 1:100
	WB	1:500 - 1:2000
Application Note	* The dilutions indicate recommended starting dilutions and the optimal dilutions or concentrations should be determined by the scientist.	
Positive Control	HeLa	
Observed Size	85 kDa	

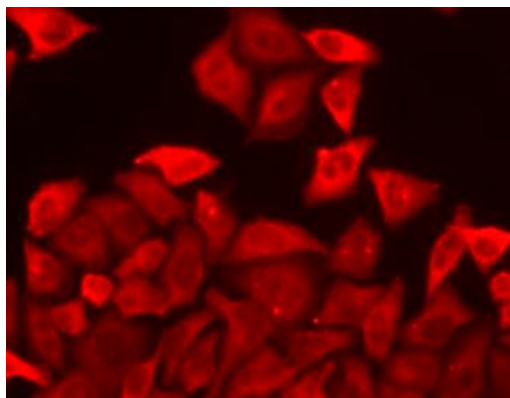
Properties

Form	Liquid
Purification	Affinity purified.
Buffer	PBS (pH 7.3), 0.02% Sodium azide and 50% Glycerol.
Preservative	0.02% Sodium azide
Stabilizer	50% Glycerol
Storage instruction	For continuous use, store undiluted antibody at 2-8°C for up to a week. For long-term storage, aliquot and store at -20°C. Storage in frost free freezers is not recommended. Avoid repeated freeze/thaw cycles. Suggest spin the vial prior to opening. The antibody solution should be gently mixed before use.
Note	For laboratory research only, not for drug, diagnostic or other use.

Bioinformation

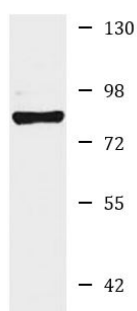
Gene Symbol	CARS
Gene Full Name	cysteinyl-tRNA synthetase
Background	This gene encodes a class 1 aminoacyl-tRNA synthetase, cysteinyl-tRNA synthetase. Each of the twenty aminoacyl-tRNA synthetases catalyzes the aminoacylation of a specific tRNA or tRNA isoaccepting family with the cognate amino acid. This gene is one of several located near the imprinted gene domain on chromosome 11p15.5, an important tumor-suppressor gene region. Alterations in this region have been associated with Beckwith-Wiedemann syndrome, Wilms tumor, rhabdomyosarcoma, adrenocortical carcinoma, and lung, ovarian and breast cancers. Alternative splicing of this gene results in multiple transcript variants. [provided by RefSeq, Aug 2010]
Calculated Mw	85 kDa
Cellular Localization	Cytoplasm. [UniProt]

Images



ARG58342 anti-CARS / CysRS antibody ICC/IF image

Immunofluorescence: HeLa cells stained with ARG58342 anti-CARS / CysRS antibody.



HeLa

ARG58342 anti-CARS / CysRS antibody WB image

Western blot: 25 µg of HeLa cell lysate stained with ARG58342 anti-CARS / CysRS antibody at 1:1000 dilution.