

ARG58346 anti-CCT6A antibody

Package: 100 µl
Store at: -20°C

Summary

Product Description	Rabbit Polyclonal antibody recognizes CCT6A
Tested Reactivity	Hu, Ms, Rat
Tested Application	WB
Host	Rabbit
Clonality	Polyclonal
Isotype	IgG
Target Name	CCT6A
Species	Human
Immunogen	Recombinant fusion protein corresponding to aa. 80-250 of Human CCT6A (NP_001753.1).
Conjugation	Un-conjugated
Alternate Names	Cctz; CCT-zeta-1; TTCP20; T-complex protein 1 subunit zeta; TCP20; CCT6; CCT-zeta; TCP-1-zeta; HTR3; MoDP-2; TCPZ; Tcp20; Acute morphine dependence-related protein 2

Application Instructions

Application table	<table> <tr> <th>Application</th><th>Dilution</th></tr> <tr> <td>WB</td><td>1:500 - 1:1000</td></tr> </table>	Application	Dilution	WB	1:500 - 1:1000
Application	Dilution				
WB	1:500 - 1:1000				
Application Note	* The dilutions indicate recommended starting dilutions and the optimal dilutions or concentrations should be determined by the scientist.				
Positive Control	U251				
Observed Size	58 kDa				

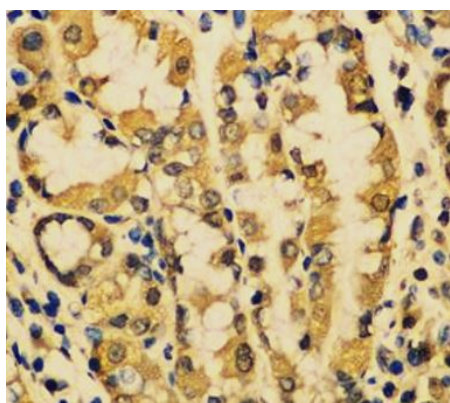
Properties

Form	Liquid
Purification	Affinity purified.
Buffer	PBS (pH 7.3), 0.02% Sodium azide and 50% Glycerol.
Preservative	0.02% Sodium azide
Stabilizer	50% Glycerol
Storage instruction	For continuous use, store undiluted antibody at 2-8°C for up to a week. For long-term storage, aliquot and store at -20°C. Storage in frost free freezers is not recommended. Avoid repeated freeze/thaw cycles. Suggest spin the vial prior to opening. The antibody solution should be gently mixed before use.
Note	For laboratory research only, not for drug, diagnostic or other use.

Bioinformation

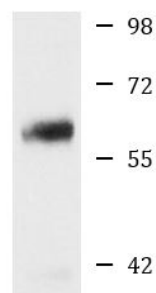
Gene Symbol	CCT6A
Gene Full Name	chaperonin containing TCP1, subunit 6A (zeta 1)
Background	The protein encoded by this gene is a molecular chaperone that is a member of the chaperonin containing TCP1 complex (CCT), also known as the TCP1 ring complex (TRiC). This complex consists of two identical stacked rings, each containing eight different proteins. Unfolded polypeptides enter the central cavity of the complex and are folded in an ATP-dependent manner. The complex folds various proteins, including actin and tubulin. Alternate transcriptional splice variants of this gene, encoding different isoforms, have been characterized. In addition, several pseudogenes of this gene have been located. [provided by RefSeq, Jun 2010]
Function	Molecular chaperone; assists the folding of proteins upon ATP hydrolysis. Known to play a role, in vitro, in the folding of actin and tubulin. [UniProt]
Calculated Mw	58 kDa
Cellular Localization	Cytoplasm. [UniProt]

Images



ARG58346 anti-CCT6A antibody IHC-P image

Immunohistochemistry: Paraffin-embedded Human stomach stained with ARG58346 anti-CCT6A antibody at 1:100 dilution.



U251

ARG58346 anti-CCT6A antibody WB image

Western blot: 25 µg of U251 cell lysate stained with ARG58346 anti-CCT6A antibody at 1:1000 dilution.