

## ARG58365 anti-ARL1 antibody

Package: 100 µl  
Store at: -20°C

### Summary

Product Description	Rabbit Polyclonal antibody recognizes ARL1
Tested Reactivity	Hu, Ms, Rat
Tested Application	ICC/IF, WB
Host	Rabbit
Clonality	Polyclonal
Isotype	IgG
Target Name	ARL1
Species	Human
Immunogen	Recombinant fusion protein corresponding to aa. 62-181 of Human ARL1 (NP_001168.1).
Conjugation	Un-conjugated
Alternate Names	ADP-ribosylation factor-like protein 1; ARFL1

### Application Instructions

Application table	Application	Dilution
	ICC/IF	1:50 - 1:200
	WB	1:500 - 1:2000
Application Note	* The dilutions indicate recommended starting dilutions and the optimal dilutions or concentrations should be determined by the scientist.	
Positive Control	293T	
Observed Size	20 kDa	

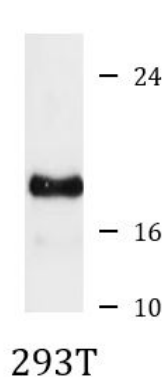
### Properties

Form	Liquid
Purification	Affinity purified.
Buffer	PBS (pH 7.3), 0.02% Sodium azide and 50% Glycerol.
Preservative	0.02% Sodium azide
Stabilizer	50% Glycerol
Storage instruction	For continuous use, store undiluted antibody at 2-8°C for up to a week. For long-term storage, aliquot and store at -20°C. Storage in frost free freezers is not recommended. Avoid repeated freeze/thaw cycles. Suggest spin the vial prior to opening. The antibody solution should be gently mixed before use.
Note	For laboratory research only, not for drug, diagnostic or other use.

## Bioinformation

Gene Symbol	ARL1
Gene Full Name	ADP-ribosylation factor-like 1
Background	The protein encoded by this gene belongs to the ARL (ADP-ribosylation factor-like) family of proteins, which are structurally related to ADP-ribosylation factors (ARFs). ARFs, described as activators of cholera toxin (CT) ADP-ribosyltransferase activity, regulate intracellular vesicular membrane trafficking, and stimulate a phospholipase D (PLD) isoform. Although, ARL proteins were initially thought not to activate CT or PLD, later work showed that they are weak stimulators of PLD and CT in a phospholipid dependent manner. Alternative splicing results in multiple transcript variants encoding different isoforms. [provided by RefSeq, Jul 2014]
Function	GTP-binding protein that has very low efficiency as allosteric activator of the cholera toxin catalytic subunit, an ADP-ribosyltransferase. Can activate phospholipase D with very low efficiency. Important for normal function of the Golgi apparatus. [UniProt]
Calculated Mw	20 kDa
Cellular Localization	Cytoplasmic side, Golgi apparatus membrane, Lipid-anchor, Membrane, Peripheral membrane protein. [UniProt]

## Images



ARG58365 anti-ARL1 antibody WB image

Western blot: 25 µg of 293T cell lysate stained with ARG58365 anti-ARL1 antibody at 1:1000 dilution.