

ARG58370 anti-ATL2 antibody

Package: 100 µl
Store at: -20°C

Summary

Product Description	Rabbit Polyclonal antibody recognizes ATL2
Tested Reactivity	Hu, Ms, Rat
Tested Application	ICC/IF, WB
Host	Rabbit
Clonality	Polyclonal
Isotype	IgG
Target Name	ATL2
Species	Human
Immunogen	Recombinant fusion protein corresponding to aa. 390-470 of Human ATL2 (NP_001129145.1).
Conjugation	Un-conjugated
Alternate Names	Aip-2; ADP-ribosylation factor-like protein 6-interacting protein 2; EC 3.6.5.-; ARL-6-interacting protein 2; ARL6IP2; Atlastin-2; atlastin2; ARL3IP2

Application Instructions

Application table	Application	Dilution
	ICC/IF	1:50 - 1:200
	WB	1:500 - 1:2000
Application Note	* The dilutions indicate recommended starting dilutions and the optimal dilutions or concentrations should be determined by the scientist.	
Positive Control	HeLa	
Observed Size	66 kDa	

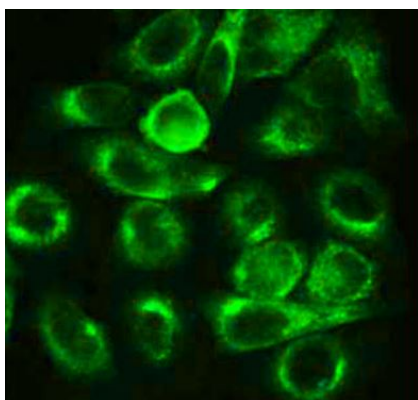
Properties

Form	Liquid
Purification	Affinity purified.
Buffer	PBS (pH 7.3), 0.02% Sodium azide and 50% Glycerol.
Preservative	0.02% Sodium azide
Stabilizer	50% Glycerol
Storage instruction	For continuous use, store undiluted antibody at 2-8°C for up to a week. For long-term storage, aliquot and store at -20°C. Storage in frost free freezers is not recommended. Avoid repeated freeze/thaw cycles. Suggest spin the vial prior to opening. The antibody solution should be gently mixed before use.
Note	For laboratory research only, not for drug, diagnostic or other use.

Bioinformation

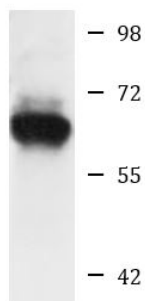
Gene Symbol	ATL2
Gene Full Name	atlastin GTPase 2
Function	GTPase tethering membranes through formation of trans-homooligomers and mediating homotypic fusion of endoplasmic reticulum membranes. Functions in endoplasmic reticulum tubular network biogenesis. [UniProt]
Calculated Mw	66 kDa
Cellular Localization	Endoplasmic reticulum membrane, Multi-pass membrane protein. [UniProt]

Images



ARG58370 anti-ATL2 antibody ICC/IF image

Immunofluorescence: HeLa cells stained with ARG58370 anti-ATL2 antibody at 1:100 dilution.



HeLa

ARG58370 anti-ATL2 antibody WB image

Western blot: 25 µg of HeLa cell lysate stained with ARG58370 anti-ATL2 antibody at 1:1000 dilution.