

ARG58376 anti-TBX20 antibody

Package: 50 µl
Store at: -20°C

Summary

Product Description	Rabbit Polyclonal antibody recognizes TBX20
Tested Reactivity	Hu
Predict Reactivity	Ms, Rat, Cow, Dog, Gpig, Hrs, Pig, Rb, Zfsh
Tested Application	IHC-P, WB
Host	Rabbit
Clonality	Polyclonal
Isotype	IgG
Target Name	TBX20
Species	Human
Immunogen	Synthetic peptide around the N-terminal region of Human TBX20. (located within the following region: MEFTASPKPQLSSRANAFSIAALMSSGGGSKEKEATENTIKPLEQFVEKSS)
Conjugation	Un-conjugated
Alternate Names	T-box protein 20; ASD4; T-box transcription factor TBX20

Application Instructions

Predict Reactivity Note	Predicted Homology Based On Immunogen Sequence: Cow: 100%; Dog: 100%; Guinea Pig: 93%; Horse: 100%; Mouse: 100%; Pig: 100%; Rabbit: 100%; Rat: 100%; Zebrafish: 100%						
Application table	<table> <tr> <th>Application</th><th>Dilution</th></tr> <tr> <td>IHC-P</td><td>5 µg/ml</td></tr> <tr> <td>WB</td><td>1 µg/ml</td></tr> </table>	Application	Dilution	IHC-P	5 µg/ml	WB	1 µg/ml
Application	Dilution						
IHC-P	5 µg/ml						
WB	1 µg/ml						
Application Note	* The dilutions indicate recommended starting dilutions and the optimal dilutions or concentrations should be determined by the scientist.						
Observed Size	~ 49 kDa						

Properties

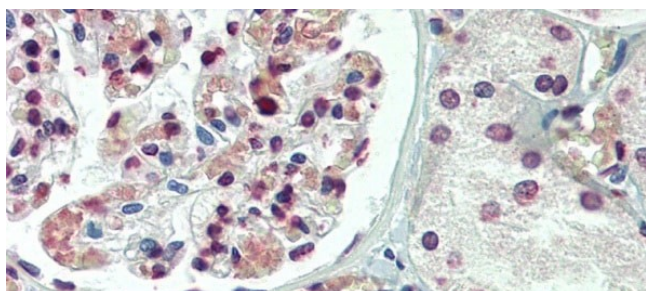
Form	Liquid
Purification	Affinity purified.
Buffer	PBS, 0.09% (w/v) Sodium azide and 2% Sucrose.
Preservative	0.09% (w/v) Sodium azide
Stabilizer	2% Sucrose
Concentration	Batch dependent: 0.5 - 1 mg/ml

Storage instruction	For continuous use, store undiluted antibody at 2-8°C for up to a week. For long-term storage, aliquot and store at -20°C or below. Storage in frost free freezers is not recommended. Avoid repeated freeze/thaw cycles. Suggest spin the vial prior to opening. The antibody solution should be gently mixed before use.
Note	For laboratory research only, not for drug, diagnostic or other use.

Bioinformation

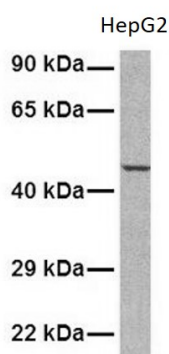
Gene Symbol	TBX20
Gene Full Name	T-box 20
Background	This gene encodes a T-box family member. The T-box family members share a common DNA binding domain, termed the T-box, and they are transcription factors involved in the regulation of developmental processes. This gene is essential for heart development. Mutations in this gene are associated with diverse cardiac pathologies, including defects in septation, valvulogenesis and cardiomyopathy. Alternatively spliced transcript variants encoding different isoforms have been found for this gene. [provided by RefSeq, Oct 2009]
Function	Acts as a transcriptional activator and repressor required for cardiac development and may have key roles in the maintenance of functional and structural phenotypes in adult heart. [UniProt]
Calculated Mw	49 kDa

Images



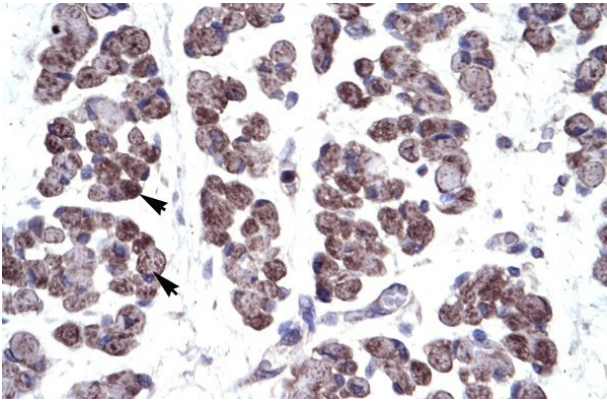
ARG58376 anti-TBX20 antibody IHC-P image

Immunohistochemistry: Paraffin-embedded Human kidney stained with ARG58376 anti-TBX20 antibody at 5 µg/ml dilution.



ARG58376 anti-TBX20 antibody WB image

Western blot: HepG2 cell lysate stained with ARG58376 anti-TBX20 antibody at 1 µg/ml dilution.



ARG58376 anti-TBX20 antibody IHC-P image

Immunohistochemistry: Paraffin-embedded Human muscle stained with ARG58376 anti-TBX20 antibody.