

ARG58420 anti-CPB1 / Carboxypeptidase B antibody

Package: 100 µl
Store at: -20°C

Summary

Product Description	Rabbit Polyclonal antibody recognizes CPB1 / Carboxypeptidase B
Tested Reactivity	Hu
Tested Application	FACS, ICC/IF, IHC-P, WB
Host	Rabbit
Clonality	Polyclonal
Isotype	IgG
Target Name	CPB1 / Carboxypeptidase B
Species	Human
Immunogen	KLH-conjugated synthetic peptide corresponding to aa. 9-37 (N-terminus) of Human CPB1.
Conjugation	Un-conjugated
Alternate Names	Pancreas-specific protein; EC 3.4.17.2; Carboxypeptidase B; CPB; PASP; PCPB

Application Instructions

Application table	Application	Dilution
	FACS	1:10 - 1:50
	ICC/IF	1:10 - 1:50
	IHC-P	1:10 - 1:50
	WB	1:1000
Application Note	* The dilutions indicate recommended starting dilutions and the optimal dilutions or concentrations should be determined by the scientist.	
Positive Control	K562	

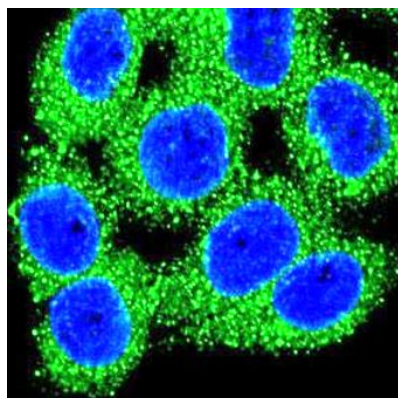
Properties

Form	Liquid
Purification	Purification with Protein A and immunogen peptide.
Buffer	PBS and 0.09% (W/V) Sodium azide.
Preservative	0.09% (W/V) Sodium azide.
Storage instruction	For continuous use, store undiluted antibody at 2-8°C for up to a week. For long-term storage, aliquot and store at -20°C or below. Storage in frost free freezers is not recommended. Avoid repeated freeze/thaw cycles. Suggest spin the vial prior to opening. The antibody solution should be gently mixed before use.
Note	For laboratory research only, not for drug, diagnostic or other use.

Bioinformation

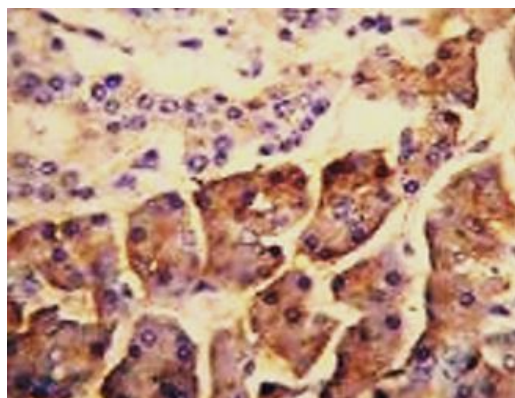
Gene Symbol	CPB1
Gene Full Name	carboxypeptidase B1 (tissue)
Background	Three different procarboxypeptidases A and two different procarboxypeptidases B have been isolated. The B1 and B2 forms differ from each other mainly in isoelectric point. Carboxypeptidase B1 is a highly tissue-specific protein and is a useful serum marker for acute pancreatitis and dysfunction of pancreatic transplants. It is not elevated in pancreatic carcinoma. [provided by RefSeq, Jul 2008]
Calculated Mw	47 kDa
Cellular Localization	Secreted. [UniProt]

Images



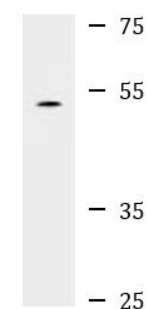
ARG58420 anti-CPB1 / Carboxypeptidase B antibody ICC/IF image

Immunofluorescence: HeLa cells stained with ARG58420 anti-CPB1 / Carboxypeptidase B antibody (green). DAPI (blue) for nuclear staining.



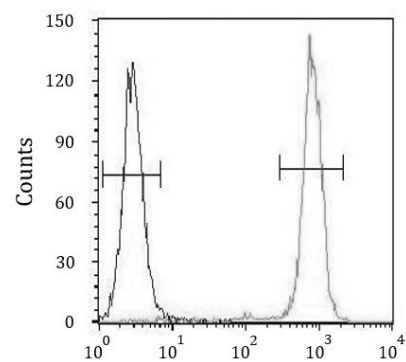
ARG58420 anti-CPB1 / Carboxypeptidase B antibody IHC-P image

Immunohistochemistry: Formalin-fixed and paraffin-embedded Human pancreas tissue stained with ARG58420 anti-CPB1 / Carboxypeptidase B antibody.



ARG58420 anti-CPB1 / Carboxypeptidase B antibody WB image

Western blot: 35 µg of K562 cell lysate stained with ARG58420 anti-CPB1 / Carboxypeptidase B antibody.



ARG58420 anti-CPB1 / Carboxypeptidase B antibody FACS image

Flow Cytometry: HeLa cells stained with ARG58420 anti-CPB1 / Carboxypeptidase B antibody (right histogram) or without primary antibody as control (left histogram), followed by incubation with FITC labelled secondary antibody.