

## ARG58463 anti-Cathepsin H antibody

Package: 100 µl  
Store at: -20°C

### Summary

Product Description	Rabbit Polyclonal antibody recognizes Cathepsin H
Tested Reactivity	Hu, Ms, Rat
Tested Application	WB
Host	Rabbit
Clonality	Polyclonal
Isotype	IgG
Target Name	Cathepsin H
Species	Human
Immunogen	Recombinant fusion protein corresponding to aa. 23-335 of Human Cathepsin H (NP_004381.2).
Conjugation	Un-conjugated
Alternate Names	CPSB; EC 3.4.22.16; minichain; ACC5; ACC4; ACC-5; ACC-4; Pro-cathepsin H

### Application Instructions

Application table	<table> <tr> <th>Application</th><th>Dilution</th></tr> <tr> <td>WB</td><td>1:500 - 1:2000</td></tr> </table>	Application	Dilution	WB	1:500 - 1:2000
Application	Dilution				
WB	1:500 - 1:2000				
Application Note	* The dilutions indicate recommended starting dilutions and the optimal dilutions or concentrations should be determined by the scientist.				
Positive Control	K562				
Observed Size	32 kDa				

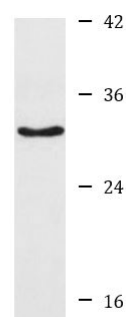
### Properties

Form	Liquid
Purification	Affinity purified.
Buffer	PBS (pH 7.3), 0.02% Sodium azide and 50% Glycerol.
Preservative	0.02% Sodium azide
Stabilizer	50% Glycerol
Storage instruction	For continuous use, store undiluted antibody at 2-8°C for up to a week. For long-term storage, aliquot and store at -20°C. Storage in frost free freezers is not recommended. Avoid repeated freeze/thaw cycles. Suggest spin the vial prior to opening. The antibody solution should be gently mixed before use.
Note	For laboratory research only, not for drug, diagnostic or other use.

## Bioinformation

Gene Symbol	CTSH
Gene Full Name	cathepsin H
Background	The protein encoded by this gene is a lysosomal cysteine proteinase important in the overall degradation of lysosomal proteins. It is composed of a dimer of disulfide-linked heavy and light chains, both produced from a single protein precursor. The encoded protein, which belongs to the peptidase C1 protein family, can act both as an aminopeptidase and as an endopeptidase. Increased expression of this gene has been correlated with malignant progression of prostate tumors. [provided by RefSeq, Mar 2010]
Function	Important for the overall degradation of proteins in lysosomes. [UniProt]
Calculated Mw	37 kDa
Cellular Localization	Lysosome. [UniProt]

## Images



K562

ARG58463 anti-Cathepsin H antibody WB image

Western blot: 25 µg of K562 cell lysate stained with ARG58463 anti-Cathepsin H antibody at 1:1000 dilution.