

ARG58479 anti-CSTF2 / CstF 64 antibody

Package: 100 µl
Store at: -20°C

Summary

Product Description	Rabbit Polyclonal antibody recognizes CSTF2 / CstF 64
Tested Reactivity	Hu, Ms, Rat
Tested Application	IHC-P, WB
Specificity	This antibody might cross-react to CSTF2T / CstF 64 protein.
Host	Rabbit
Clonality	Polyclonal
Isotype	IgG
Target Name	CSTF2 / CstF 64
Species	Human
Immunogen	Recombinant fusion protein corresponding to aa. 1-180 of Human CSTF2 / CstF 64 (NP_001316.1).
Conjugation	Un-conjugated
Alternate Names	CstF-64; CF-1 64 kDa subunit; Cleavage stimulation factor 64 kDa subunit; CSTF 64 kDa subunit; Cleavage stimulation factor subunit 2

Application Instructions

Application table	Application	Dilution
	IHC-P	1:50 - 1:200
	WB	1:500 - 1:2000
Application Note	* The dilutions indicate recommended starting dilutions and the optimal dilutions or concentrations should be determined by the scientist.	
Positive Control	Jurkat	
Observed Size	61 kDa	

Properties

Form	Liquid
Purification	Affinity purified.
Buffer	PBS (pH 7.3), 0.02% Sodium azide and 50% Glycerol.
Preservative	0.02% Sodium azide
Stabilizer	50% Glycerol
Storage instruction	For continuous use, store undiluted antibody at 2-8°C for up to a week. For long-term storage, aliquot and store at -20°C. Storage in frost free freezers is not recommended. Avoid repeated freeze/thaw cycles. Suggest spin the vial prior to opening. The antibody solution should be gently mixed before use.

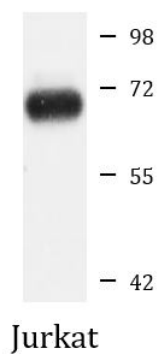
Note

For laboratory research only, not for drug, diagnostic or other use.

Bioinformation

Gene Symbol	CSTF2
Gene Full Name	cleavage stimulation factor, 3' pre-RNA, subunit 2, 64kDa
Background	This gene encodes a nuclear protein with an RRM (RNA recognition motif) domain. The protein is a member of the cleavage stimulation factor (CSTF) complex that is involved in the 3' end cleavage and polyadenylation of pre-mRNAs. Specifically, this protein binds GU-rich elements within the 3'-untranslated region of mRNAs. [provided by RefSeq, Jul 2008]
Function	One of the multiple factors required for polyadenylation and 3'-end cleavage of mammalian pre-mRNAs. This subunit is directly involved in the binding to pre-mRNAs (By similarity). [UniProt]
Calculated Mw	61 kDa
Cellular Localization	Nucleus. [UniProt]

Images



ARG58479 anti-CSTF2 / CstF 64 antibody WB image

Western blot: 25 µg of Jurkat cell lysate stained with ARG58479 anti-CSTF2 / CstF 64 antibody at 1:3000 dilution.