

ARG58511 anti-CtBP2 antibody

Package: 50 µg
Store at: -20°C

Summary

Product Description	Rabbit Polyclonal antibody recognizes CtBP2
Tested Reactivity	Hu, Ms, Rat
Predict Reactivity	Chk
Tested Application	ICC/IF, IHC-Fr, IHC-P, WB
Host	Rabbit
Clonality	Polyclonal
Isotype	IgG
Target Name	CtBP2
Species	Human
Immunogen	Synthetic peptide corresponding to a sequence at the C-terminus of Human CTBP2(429-445aa PNQPTKHGDNREHPNEQ), identical to the related Rat and Mouse sequences.
Conjugation	Un-conjugated
Alternate Names	CtBP2; C-terminal-binding protein 2

Application Instructions

Application table	Application	Dilution
	ICC/IF	0.5 - 1 µg/ml
	IHC-Fr	0.5 - 1 µg/ml
	IHC-P	0.5 - 1 µg/ml
	WB	0.1 - 0.5 µg/ml
Application Note	IHC-P: Antigen Retrieval: Heat mediation was performed in Citrate buffer (pH 6.0, epitope retrieval solution) for 20 min. * The dilutions indicate recommended starting dilutions and the optimal dilutions or concentrations should be determined by the scientist.	

Properties

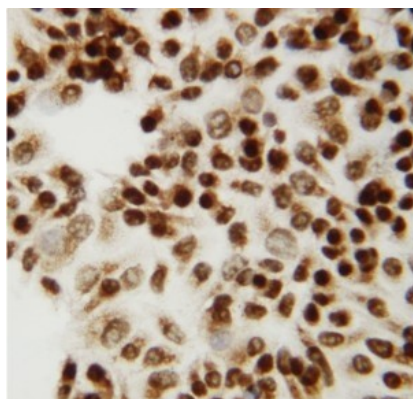
Form	Liquid
Purification	Affinity purification with immunogen.
Buffer	0.9% NaCl, 0.2% Na ₂ HPO ₄ , 0.05% Thimerosal, 0.05% Sodium azide and 5% BSA.
Preservative	0.05% Thimerosal and 0.05% Sodium azide
Stabilizer	5% BSA
Concentration	0.5 mg/ml

Storage instruction	For continuous use, store undiluted antibody at 2-8°C for up to a week. For long-term storage, aliquot and store at -20°C or below. Storage in frost free freezers is not recommended. Avoid repeated freeze/thaw cycles. Suggest spin the vial prior to opening. The antibody solution should be gently mixed before use.
Note	For laboratory research only, not for drug, diagnostic or other use.

Bioinformation

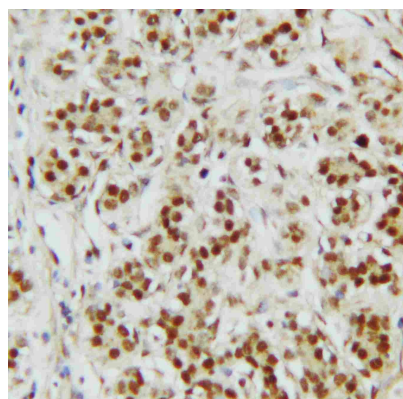
Gene Symbol	CTBP2
Gene Full Name	C-terminal binding protein 2
Background	This gene produces alternative transcripts encoding two distinct proteins. One protein is a transcriptional repressor, while the other isoform is a major component of specialized synapses known as synaptic ribbons. Both proteins contain a NAD ⁺ binding domain similar to NAD ⁺ -dependent 2-hydroxyacid dehydrogenases. A portion of the 3' untranslated region was used to map this gene to chromosome 21q21.3; however, it was noted that similar loci elsewhere in the genome are likely. Blast analysis shows that this gene is present on chromosome 10. Several transcript variants encoding two different isoforms have been found for this gene. [provided by RefSeq, Feb 2014]
Function	Corepressor targeting diverse transcription regulators. Functions in brown adipose tissue (BAT) differentiation (By similarity). Isoform 2 probably acts as a scaffold for specialized synapses. [UniProt]
Calculated Mw	49 kDa
Cellular Localization	Nucleus. Cell junction, synapse. [UniProt]

Images



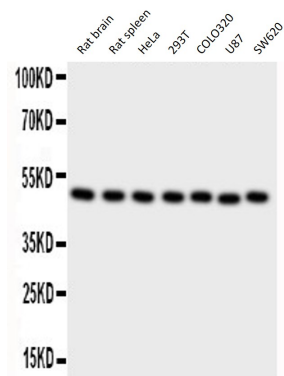
ARG58511 anti-CtBP2 antibody ICC image

Immunocytochemistry: HeLa cells stained with ARG58511 anti-CtBP2 antibody.



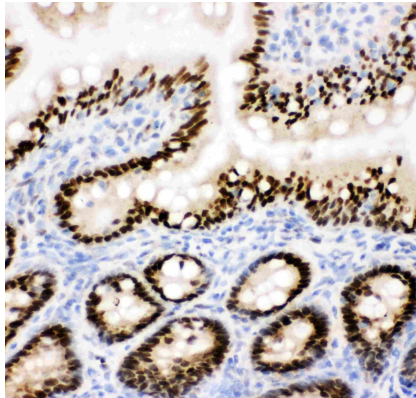
ARG58511 anti-CtBP2 antibody IHC-P image

Immunohistochemistry: Paraffin-embedded Human mammary cancer stained with ARG58511 anti-CtBP2 antibody.



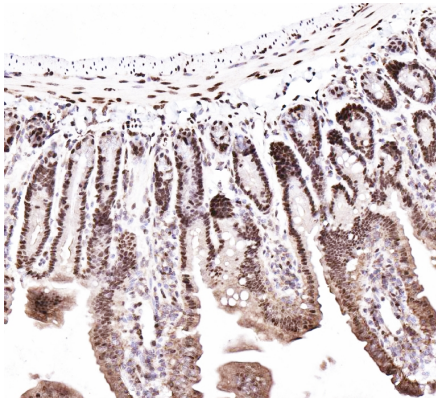
ARG58511 anti-CtBP2 antibody WB image

Western blot: 50 µg of Rat brain, 50 µg of Rat spleen, 40 µg of HeLa, 40 µg of 293T, 40 µg of COLO320, 40 µg of U87 and 40 µg of SW620 whole cell lysates stained with ARG58511 anti-CtBP2 antibody at 0.5 µg/ml dilution.



ARG58511 anti-CtBP2 antibody IHC-Fr image

Immunohistochemistry: Frozen section of Rat intestine tissue stained with ARG58511 anti-CtBP2 antibody.



ARG58511 anti-CtBP2 antibody IHC-P image

Immunohistochemistry: Paraffin-embedded Mouse intestine tissue. Antigen Retrieval: Heat mediation was performed in Citrate buffer (pH 6.0, epitope retrieval solution) for 20 min. The tissue section was blocked with 10% goat serum. The tissue section was then stained with ARG58511 anti-CtBP2 antibody at 1 µg/ml dilution, overnight at 4°C.