

ARG58553 anti-DIAPH2 phospho (Thr1061) antibody

Package: 50 µl
Store at: -20°C

Summary

Product Description	Rabbit Polyclonal antibody recognizes DIAPH2 phospho (Thr1061)
Tested Reactivity	Hu, Mk
Tested Application	WB
Specificity	This antibody detects a ~135 kDa protein corresponding to DIAPH2 in immunoblots of human A7r5 and mouse C2C12 cells treated with calyculin A. This antibody detects transfected DIAPH2 after treatment with calyculin A, but this reactivity is removed after phosphatase treatment. In addition, the antibody does not detect DIAPH2 (T1061A) mutant.
Host	Rabbit
Clonality	Polyclonal
Isotype	IgG
Target Name	DIAPH2
Species	Mouse
Immunogen	KLH-conjugated phospho specific peptide around Thr1061 of Mouse DIAPH2. This peptide sequence is identical in Rat and has 2 aa. differences to Human DIAPH2. The sequence has low homology to other formins.
Conjugation	Un-conjugated
Alternate Names	Diaphanous-related formin-2; DRF2; Protein diaphanous homolog 2; POF2; DIA; POF; DIA2

Application Instructions

Application table	<table> <tr> <th>Application</th><th>Dilution</th></tr> <tr> <td>WB</td><td>1:1000</td></tr> </table>	Application	Dilution	WB	1:1000
Application	Dilution				
WB	1:1000				
Application Note	<p>WB: Antibody is suggested to be diluted in 5% skimmed milk/Tris buffer with 0.04% Tween20 and incubated for 1 hour at room temperature.</p> <p>* The dilutions indicate recommended starting dilutions and the optimal dilutions or concentrations should be determined by the scientist.</p>				
Observed Size	~ 135 kDa				

Properties

Form	Liquid
Purification	Affinity purified.
Buffer	PBS, 0.05% Sodium azide, 50% Glycerol and 1 mg/ml BSA.
Preservative	0.05% Sodium azide
Stabilizer	50% Glycerol and 1 mg/ml BSA
Storage instruction	For continuous use, store undiluted antibody at 2-8°C for up to a week. For long-term storage, aliquot

and store at -20°C. Storage in frost free freezers is not recommended. Avoid repeated freeze/thaw cycles. Suggest spin the vial prior to opening. The antibody solution should be gently mixed before use.

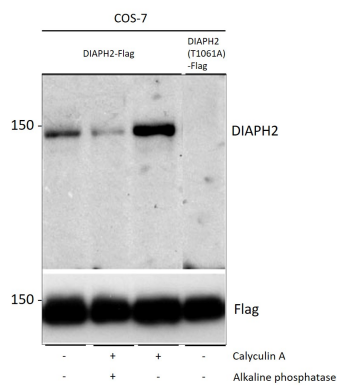
Note

For laboratory research only, not for drug, diagnostic or other use.

Bioinformation

Gene Symbol	DIAPH2
Gene Full Name	diaphanous-related formin 2
Background	The product of this gene belongs to the diaphanous subfamily of the formin homology family of proteins. This gene may play a role in the development and normal function of the ovaries. Defects in this gene have been linked to premature ovarian failure 2. Alternatively spliced transcript variants encoding different isoforms have been identified. [provided by RefSeq, Jul 2008]
Function	Could be involved in oogenesis. Involved in the regulation of endosome dynamics. Implicated in a novel signal transduction pathway, in which isoform 3 and CSK are sequentially activated by RHOD to regulate the motility of early endosomes through interactions with the actin cytoskeleton. [UniProt]
Calculated Mw	126 kDa

Images



ARG58553 anti-DIAPH2 phospho (Thr1061) antibody WB image

Western blot: COS-7 cells expressing Flag-tagged DIAPH2 (lanes 1-3) or DIAPH2 mutant (T1061A) (lane 4). The cells were untreated (lane 1, 4) or treated with calyculin A (lanes 2-3). The blot was treated with alkaline phosphatase (lane 2). All blots were stained with ARG58553 anti-DIAPH2 phospho (Thr1061) antibody (upper blot) or anti-Flag antibody (lower blot).