

ARG58557 anti-CK2 beta antibody

Package: 50 µg
Store at: -20°C

Summary

Product Description	Goat Polyclonal antibody recognizes CK2 beta
Tested Reactivity	Hu, Ms, Pig
Predict Reactivity	Cow, Rat, Dog
Tested Application	WB
Host	Goat
Clonality	Polyclonal
Isotype	IgG
Target Name	CK2 beta
Species	Human
Immunogen	Synthetic peptide from the internal region of Human CK2 beta. (NP_001311.3; NP_001269314.1). (C-PEYRPKRPNQFVPR)
Conjugation	Un-conjugated
Alternate Names	G5A; Phosvitin; CSK2B; Casein kinase II subunit beta; Protein G5a; CK II beta; CK2N; CK2B

Application Instructions

Application table	<table> <tr> <th>Application</th><th>Dilution</th></tr> <tr> <td>WB</td><td>0.1 - 0.3 µg/ml</td></tr> </table>	Application	Dilution	WB	0.1 - 0.3 µg/ml
Application	Dilution				
WB	0.1 - 0.3 µg/ml				
Application Note	WB: Recommend incubate at RT for 1h. * The dilutions indicate recommended starting dilutions and the optimal dilutions or concentrations should be determined by the scientist.				
Observed Size	~ 26 kDa				

Properties

Form	Liquid
Purification	Affinity purified
Buffer	Tris saline (pH 7.3), 0.02% Sodium azide and 0.5% BSA.
Preservative	0.02% Sodium azide
Stabilizer	0.5% BSA
Concentration	0.5 mg/ml
Storage instruction	For continuous use, store undiluted antibody at 2-8°C for up to a week. For long-term storage, aliquot and store at -20°C or below. Storage in frost free freezers is not recommended. Avoid repeated freeze/thaw cycles. Suggest spin the vial prior to opening. The antibody solution should be gently mixed before use.

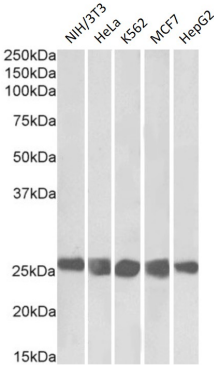
Note

For laboratory research only, not for drug, diagnostic or other use.

Bioinformation

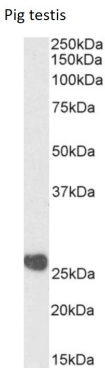
Gene Symbol	CSNK2B
Gene Full Name	casein kinase 2, beta polypeptide
Background	This gene encodes the beta subunit of casein kinase II, a ubiquitous protein kinase which regulates metabolic pathways, signal transduction, transcription, translation, and replication. The enzyme is composed of three subunits, alpha, alpha prime and beta, which form a tetrameric holoenzyme. The alpha and alpha prime subunits are catalytic, while the beta subunit serves regulatory functions. The enzyme localizes to the endoplasmic reticulum and the Golgi apparatus. Two transcript variants encoding different isoforms have been found for this gene. [provided by RefSeq, Sep 2013]
Function	Participates in Wnt signaling (By similarity). Plays a complex role in regulating the basal catalytic activity of the alpha subunit. [UniProt]
Calculated Mw	25 kDa
PTM	Phosphorylated by alpha subunit. [UniProt]

Images



ARG58557 anti-CK2 beta antibody WB image

Western blot: 35 µg of NIH/3T3, HeLa, K562, MCF7 and HepG2 cell lysates (in RIPA buffer) stained with ARG58557 anti-CK2 beta antibody at 0.3 µg/ml dilution. Primary incubation was 1 hour. Detected by chemiluminescence.



ARG58557 anti-CK2 beta antibody WB image

Western blot: 35 µg of Pig testis lysate (in RIPA buffer) stained with ARG58557 anti-CK2 beta antibody at 0.3 µg/ml dilution. Primary incubation was 1 hour. Detected by chemiluminescence.