

ARG58572 anti-Emerin antibody

Package: 50 µg
Store at: -20°C

Summary

Product Description	Rabbit Polyclonal antibody recognizes Emerin
Tested Reactivity	Hu, Ms, Rat
Tested Application	FACS, ICC/IF, IHC-P, WB
Host	Rabbit
Clonality	Polyclonal
Isotype	IgG
Target Name	Emerin
Species	Human
Immunogen	Synthetic peptide corresponding to aa. 1-48 of Human Emerin. (MDNYADLSDELTTLLRRYNIPHGPPVVGSTRRLYEKKIFEYETQRRRL)
Conjugation	Un-conjugated
Alternate Names	Emerin; LEMD5; EDMD; STA

Application Instructions

Application table	Application	Dilution
	FACS	1:150 - 1:500
	ICC/IF	1:200 - 1:1000
	IHC-P	0.5 - 1 µg/ml
	WB	0.1 - 0.5 µg/ml
Application Note	IHC-P: Antigen Retrieval: Heat mediation was performed in Citrate buffer (pH 6.0) for 20 min, or performed in EDTA buffer (pH 8.0). * The dilutions indicate recommended starting dilutions and the optimal dilutions or concentrations should be determined by the scientist.	

Properties

Form	Liquid
Purification	Affinity purification with immunogen.
Buffer	0.9% NaCl, 0.2% Na ₂ HPO ₄ , 0.05% Sodium azide and 5% BSA.
Preservative	0.05% Sodium azide
Stabilizer	5% BSA
Concentration	0.5 mg/ml
Storage instruction	For continuous use, store undiluted antibody at 2-8°C for up to a week. For long-term storage, aliquot and store at -20°C or below. Storage in frost free freezers is not recommended. Avoid repeated

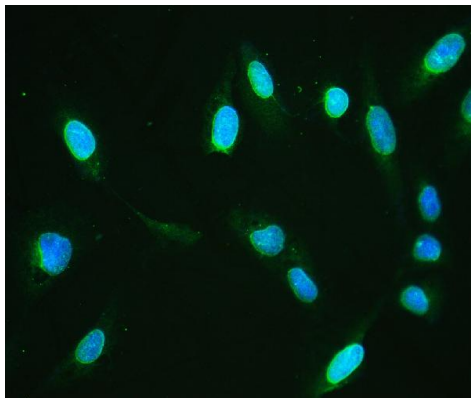
freeze/thaw cycles. Suggest spin the vial prior to opening. The antibody solution should be gently mixed before use.

Note For laboratory research only, not for drug, diagnostic or other use.

Bioinformation

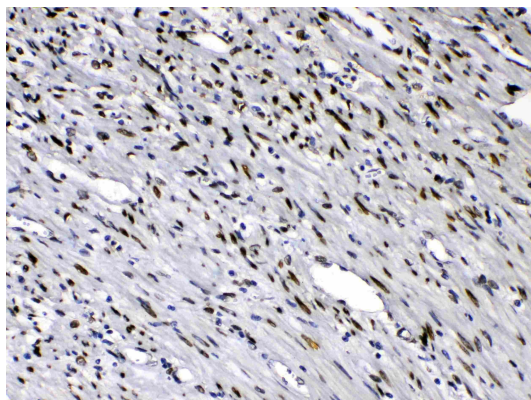
Gene Symbol	EMD
Gene Full Name	emerin
Background	Emerin is a serine-rich nuclear membrane protein and a member of the nuclear lamina-associated protein family. It mediates membrane anchorage to the cytoskeleton. Dreifuss-Emery muscular dystrophy is an X-linked inherited degenerative myopathy resulting from mutation in the emerin gene. [provided by RefSeq, Jul 2008]
Function	Stabilizes and promotes the formation of a nuclear actin cortical network. Stimulates actin polymerization in vitro by binding and stabilizing the pointed end of growing filaments. Inhibits beta-catenin activity by preventing its accumulation in the nucleus. Acts by influencing the nuclear accumulation of beta-catenin through a CRM1-dependent export pathway. Links centrosomes to the nuclear envelope via a microtubule association. EMD and BAF are cooperative cofactors of HIV-1 infection. Association of EMD with the viral DNA requires the presence of BAF and viral integrase. The association of viral DNA with chromatin requires the presence of BAF and EMD. Required for proper localization of non-farnesylated prelamin-A/C. [UniProt]
Calculated Mw	29 kDa
PTM	Found in four different phosphorylated forms, three of which appear to be associated with the cell cycle. [UniProt]
Cellular Localization	Nucleus inner membrane; Single-pass membrane protein; Nucleoplasmic side. Nucleus outer membrane. Colocalized with BANF1 at the central region of the assembling nuclear rim, near spindle-attachment sites. The accumulation of different intermediates of prelamin-A/C (non- farnesylated or carboxymethylated farnesylated prelamin-A/C) in fibroblasts modify its localization in the nucleus. [UniProt]

Images



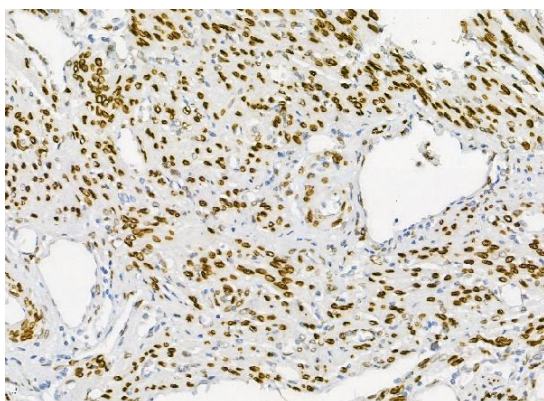
ARG58572 anti-Emerin antibody ICC/IF image

Immunofluorescence: U2OS cells were blocked with 10% goat serum and then stained with ARG58572 anti-Emerin antibody (green) at 2 µg/ml dilution, overnight at 4°C. DAPI (blue) for nuclear staining.



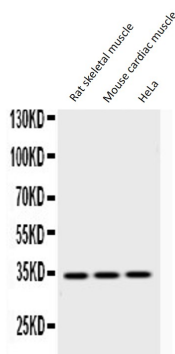
ARG58572 anti-Emerin antibody IHC-P image

Immunohistochemistry: Paraffin-embedded Human intestinal cancer tissues stained with ARG58572 anti-Emerin antibody at 1 µg/ml dilution.



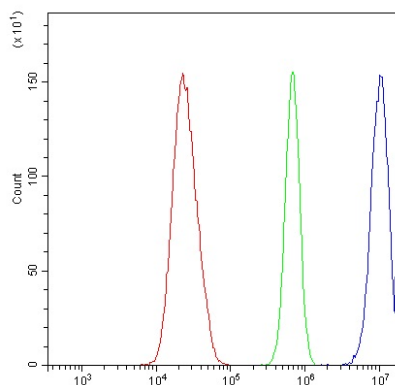
ARG58572 anti-Emerin antibody IHC-P image

Immunohistochemistry: Paraffin-embedded Human endometrial carcinoma tissue. Antigen Retrieval: Heat mediation was performed in Citrate buffer (pH 6.0) for 20 min. The tissue section was blocked with 10% goat serum. The tissue section was then stained with ARG58572 anti-Emerin antibody at 2 µg/ml dilution, overnight at 4°C.



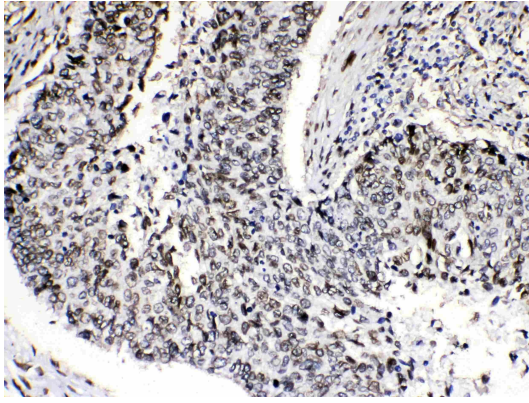
ARG58572 anti-Emerin antibody WB image

Western blot: Rat skeletal muscle extract, Mouse cardiac muscle extract and HeLa whole cell lysates stained with ARG58572 anti-Emerin antibody at 0.5 µg/ml dilution.



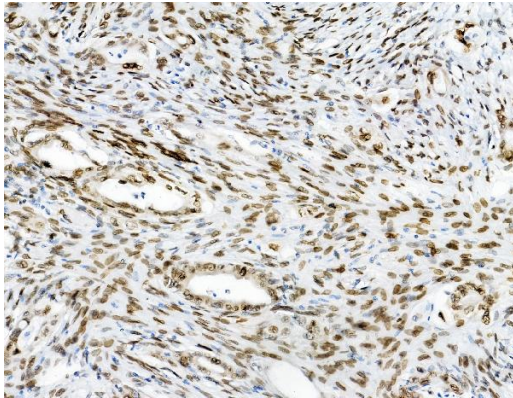
ARG58572 anti-Emerin antibody FACS image

Flow Cytometry: U2OS cells were blocked with 10% normal goat serum and then stained with ARG58572 anti-Emerin antibody (blue) at 1 µg/10⁶ cells for 30 min at 20°C, followed by incubation with DyLight®488 labelled secondary antibody. Isotype control antibody (green) was rabbit IgG (1 µg/10⁶ cells) used under the same conditions. Unlabelled sample (red) was also used as a control.



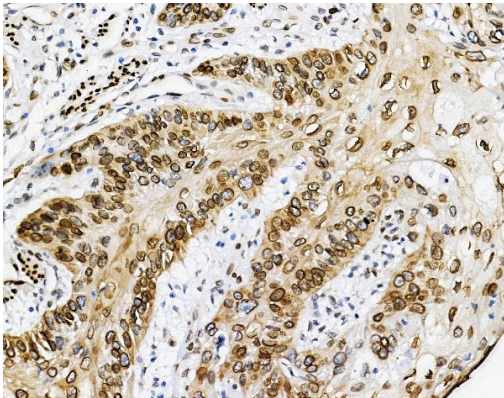
ARG58572 anti-Emerin antibody IHC-P image

Immunohistochemistry: Paraffin-embedded Human lung cancer tissues stained with ARG58572 anti-Emerin antibody at 1 µg/ml dilution.



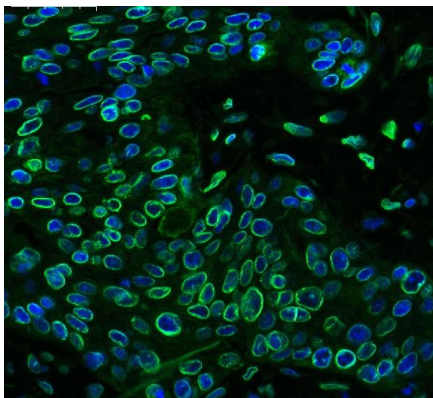
ARG58572 anti-Emerin antibody IHC-P image

Immunohistochemistry: Paraffin-embedded Human colon cancer tissue. Antigen Retrieval: Heat mediation was performed in Citrate buffer (pH 6.0) for 20 min. The tissue section was blocked with 10% goat serum. The tissue section was then stained with ARG58572 anti-Emerin antibody at 1 µg/ml dilution, overnight at 4°C.



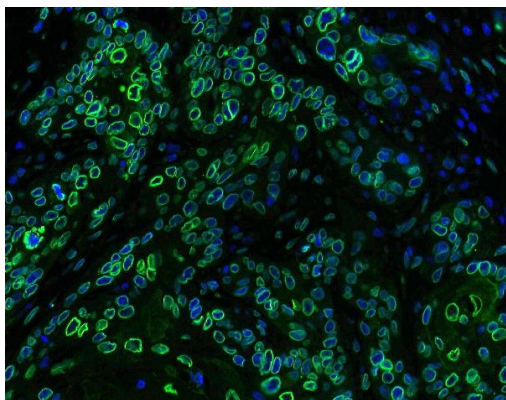
ARG58572 anti-Emerin antibody IHC-P image

Immunohistochemistry: Paraffin-embedded Human oesophagus squama cancer tissue. Antigen Retrieval: Heat mediation was performed in Citrate buffer (pH 6.0) for 20 min. The tissue section was blocked with 10% goat serum. The tissue section was then stained with ARG58572 anti-Emerin antibody at 1 µg/ml dilution, overnight at 4°C.



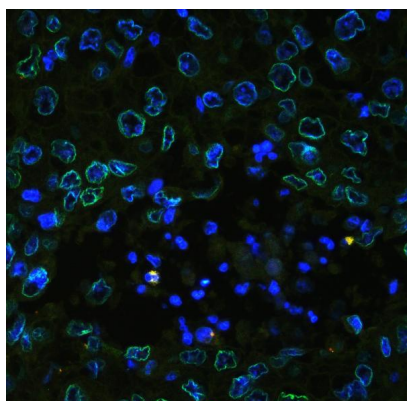
ARG58572 anti-Emerin antibody IHC-P image

Immunohistochemistry: Paraffin-embedded Human oesophagus squama cancer tissue. Antigen Retrieval: Heat mediation was performed in Citrate buffer (pH 6.0) for 20 min. The tissue section was blocked with 10% goat serum. The tissue section was then stained with ARG58572 anti-Emerin antibody (green) at 1 µg/ml dilution, overnight at 4°C. The section was counterstained with DAPI (blue).



ARG58572 anti-Emerin antibody IHC-P image

Immunohistochemistry: Paraffin-embedded Human oesophagus squama cancer tissue. Antigen Retrieval: Heat mediation was performed in Citrate buffer (pH 6.0) for 20 min. The tissue section was blocked with 10% goat serum. The tissue section was then stained with ARG58572 anti-Emerin antibody (green) at 2 µg/ml dilution, overnight at 4°C. The section was counterstained with DAPI (blue).



ARG58572 anti-Emerin antibody IHC-P image

Immunohistochemistry: Paraffin-embedded Human lung cancer tissue. Antigen Retrieval: Heat mediation was performed in EDTA buffer (pH 8.0). The tissue section was blocked with 10% goat serum. The tissue section was then stained with ARG58572 anti-Emerin antibody (green) at 2 µg/ml dilution, overnight at 4°C. The section was counterstained with DAPI (blue).