

ARG58607
anti-FANCC antibodyPackage: 100 µl
Store at: -20°C

Summary

Product Description	Rabbit Polyclonal antibody recognizes FANCC
Tested Reactivity	Hu
Tested Application	ICC/IF, WB
Host	Rabbit
Clonality	Polyclonal
Isotype	IgG
Target Name	FANCC
Species	Human
Immunogen	KLH-conjugated synthetic peptide between aa. 527-555 of Human FANCC.
Conjugation	Un-conjugated
Alternate Names	FA3; FACC; Protein FACC; Fanconi anemia group C protein; FAC

Application Instructions

Application table	Application	Dilution
	ICC/IF	1:25
	WB	1:1000
Application Note	* The dilutions indicate recommended starting dilutions and the optimal dilutions or concentrations should be determined by the scientist.	
Positive Control	HepG2	

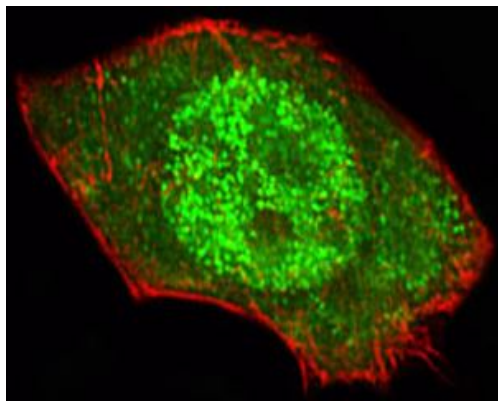
Properties

Form	Liquid
Purification	Purification with Protein A and immunogen peptide.
Buffer	PBS and 0.09% (W/V) Sodium azide.
Preservative	0.09% (W/V) Sodium azide
Storage instruction	For continuous use, store undiluted antibody at 2-8°C for up to a week. For long-term storage, aliquot and store at -20°C or below. Storage in frost free freezers is not recommended. Avoid repeated freeze/thaw cycles. Suggest spin the vial prior to opening. The antibody solution should be gently mixed before use.
Note	For laboratory research only, not for drug, diagnostic or other use.

Bioinformation

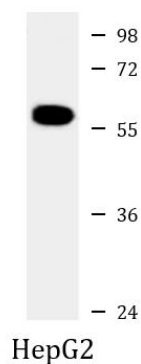
Gene Symbol	FANCC
Gene Full Name	Fanconi anemia, complementation group C
Background	The Fanconi anemia complementation group (FANC) currently includes FANCA, FANCB, FANCC, FANCD1 (also called BRCA2), FANCD2, FANCE, FANCF, FANCG, FANCI, FANCL, FANCM and FANCN (also called PALB2). The previously defined group FANCH is the same as FANCA. Fanconi anemia is a genetically heterogeneous recessive disorder characterized by cytogenetic instability, hypersensitivity to DNA crosslinking agents, increased chromosomal breakage, and defective DNA repair. The members of the Fanconi anemia complementation group do not share sequence similarity; they are related by their assembly into a common nuclear protein complex. This gene encodes the protein for complementation group C. [provided by RefSeq, Jul 2008]
Function	DNA repair protein that may operate in a postreplication repair or a cell cycle checkpoint function. May be implicated in interstrand DNA cross-link repair and in the maintenance of normal chromosome stability. Upon IFNG induction, may facilitate STAT1 activation by recruiting STAT1 to IFNGR1. [UniProt]
Calculated Mw	63 kDa
Cellular Localization	Nucleus. Cytoplasm. Note=The major form is nuclear. The minor form is cytoplasmic. [UniProt]

Images



ARG58607 anti-FANCC antibody ICC/IF image

Immunofluorescence: U251 cells stained with ARG58607 anti-FANCC antibody (green) at 1:25 dilution. DAPI (blue) for nuclear staining.



ARG58607 anti-FANCC antibody WB image

Western blot: 35 µg of HepG2 cell lysate stained with ARG58607 anti-FANCC antibody at 1:1000 dilution.