

## ARG58613 anti-ETS1 antibody

Package: 50 µl  
Store at: -20°C

### Summary

Product Description	Rabbit Polyclonal antibody recognizes ETS1
Tested Reactivity	Hu
Predict Reactivity	Ms, Rat, Cow, Dog, Goat, Gpig, Hrs, Rb, Zfsh
Tested Application	IHC-P, WB
Host	Rabbit
Clonality	Polyclonal
Isotype	IgG
Target Name	ETS1
Species	Human
Immunogen	Synthetic peptide around the N-terminal region of Human ETS1. (within the following sequence: TFSGFTKEQRLGIPKDPQWTETHVRDWVMWAVNEFSKGVDFQKFCMN)
Conjugation	Un-conjugated
Alternate Names	p54; c-ets-1; Protein C-ets-1; ETS-1; EWSR2

### Application Instructions

Predict Reactivity Note	Predicted homology based on immunogen sequence: Cow: 100%; Dog: 100%; Goat: 100%; Guinea Pig: 100%; Horse: 100%; Mouse: 100%; Rabbit: 100%; Rat: 100%; Zebrafish: 84%						
Application table	<table> <tr> <th>Application</th><th>Dilution</th></tr> <tr> <td>IHC-P</td><td>4 - 8 µg/ml</td></tr> <tr> <td>WB</td><td>1 µg/ml</td></tr> </table>	Application	Dilution	IHC-P	4 - 8 µg/ml	WB	1 µg/ml
Application	Dilution						
IHC-P	4 - 8 µg/ml						
WB	1 µg/ml						
Application Note	* The dilutions indicate recommended starting dilutions and the optimal dilutions or concentrations should be determined by the scientist.						
Positive Control	HepG2						

### Properties

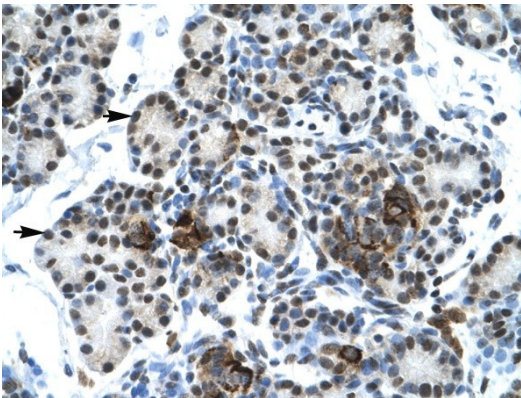
Form	Liquid
Purification	Purification with Protein A.
Buffer	PBS, 0.09% (w/v) Sodium azide and 2% Sucrose.
Preservative	0.09% (w/v) Sodium azide
Stabilizer	2% Sucrose
Concentration	Batch dependent: 0.5 - 1 mg/ml

Storage instruction	For continuous use, store undiluted antibody at 2-8°C for up to a week. For long-term storage, aliquot and store at -20°C or below. Storage in frost free freezers is not recommended. Avoid repeated freeze/thaw cycles. Suggest spin the vial prior to opening. The antibody solution should be gently mixed before use.
Note	For laboratory research only, not for drug, diagnostic or other use.

## Bioinformation

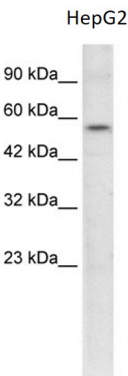
Gene Symbol	ETS1
Gene Full Name	v-ets avian erythroblastosis virus E26 oncogene homolog 1
Background	This gene encodes a member of the ETS family of transcription factors, which are defined by the presence of a conserved ETS DNA-binding domain that recognizes the core consensus DNA sequence GGAA/T in target genes. These proteins function either as transcriptional activators or repressors of numerous genes, and are involved in stem cell development, cell senescence and death, and tumorigenesis. Alternatively spliced transcript variants encoding different isoforms have been described for this gene.[provided by RefSeq, Jul 2011]
Function	Transcription factor. Directly controls the expression of cytokine and chemokine genes in a wide variety of different cellular contexts. May control the differentiation, survival and proliferation of lymphoid cells. May also regulate angiogenesis through regulation of expression of genes controlling endothelial cell migration and invasion. [UniProt]
Calculated Mw	50 kDa
PTM	Sumoylated on Lys-15 and Lys-227, preferentially with SUMO2; which inhibits transcriptional activity.  Ubiquitinated; which induces proteasomal degradation. [UniProt]

## Images



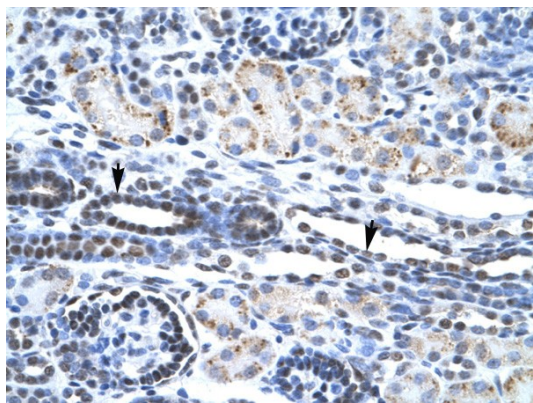
ARG58613 anti-ETS1 antibody IHC-P image

Immunohistochemistry: Paraffin-embedded Human Pancrease stained with ARG58613 anti-ETS1 antibody.



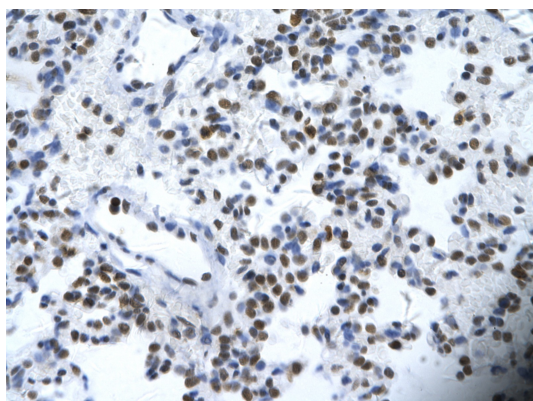
ARG58613 anti-ETS1 antibody WB image

Western blot: HepG2 cell lysate stained with ARG58613 anti-ETS1 antibody at 1 µg/ml dilution.



ARG58613 anti-ETS1 antibody IHC-P image

Immunohistochemistry: Paraffin-embedded Human kidney stained with ARG58613 anti-ETS1 antibody.



ARG58613 anti-ETS1 antibody IHC-P image

Immunohistochemistry: Paraffin-embedded Human alveolar cell stained with ARG58613 anti-ETS1 antibody at 4 - 8  $\mu$ g/ml dilution. Magnification: 400X.