

## ARG58658 anti-SERPINB1 antibody

Package: 100 µl  
Store at: -20°C

### Summary

Product Description	Rabbit Polyclonal antibody recognizes SERPINB1
Tested Reactivity	Hu, Ms, Rat
Tested Application	ICC/IF, IHC-P, WB
Host	Rabbit
Clonality	Polyclonal
Isotype	IgG
Target Name	SERPINB1
Species	Human
Immunogen	Recombinant fusion protein corresponding to aa. 100-379 of Human SERPINB1 (NP_109591.1).
Conjugation	Un-conjugated
Alternate Names	EI; LEI; ELANH2; Monocyte/neutrophil elastase inhibitor; Leukocyte elastase inhibitor; M/NEI; Serpin B1; MNEI; PI-2; PI2; Peptidase inhibitor 2; HEL57

### Application Instructions

Application table	Application	Dilution
	ICC/IF	1:50 - 1:200
	IHC-P	1:50 - 1:200
	WB	1:500 - 1:2000
Application Note	* The dilutions indicate recommended starting dilutions and the optimal dilutions or concentrations should be determined by the scientist.	
Positive Control	MCF7	
Observed Size	43 kDa	

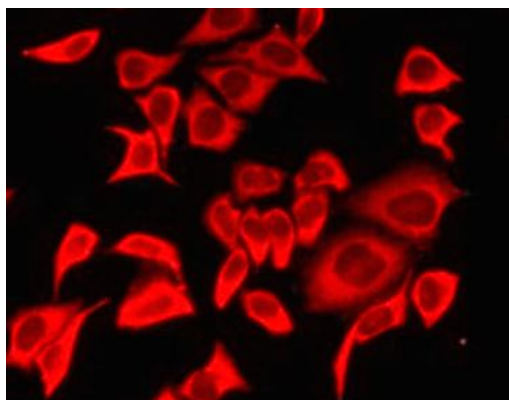
### Properties

Form	Liquid
Purification	Affinity purified.
Buffer	PBS (pH 7.3), 0.02% Sodium azide and 50% Glycerol.
Preservative	0.02% Sodium azide
Stabilizer	50% Glycerol
Storage instruction	For continuous use, store undiluted antibody at 2-8°C for up to a week. For long-term storage, aliquot and store at -20°C. Storage in frost free freezers is not recommended. Avoid repeated freeze/thaw cycles. Suggest spin the vial prior to opening. The antibody solution should be gently mixed before use.

## Bioinformation

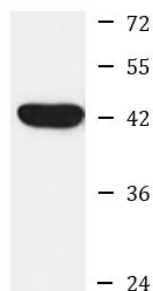
Gene Symbol	SERPINB1
Gene Full Name	serpin peptidase inhibitor, clade B (ovalbumin), member 1
Background	The protein encoded by this gene is a member of the serpin family of proteinase inhibitors. Members of this family maintain homeostasis by neutralizing overexpressed proteinase activity through their function as suicide substrates. This protein inhibits the neutrophil-derived proteinases neutrophil elastase, cathepsin G, and proteinase-3 and thus protects tissues from damage at inflammatory sites. Alternative splicing results in multiple transcript variants. [provided by RefSeq, Aug 2012]
Function	Regulates the activity of the neutrophil proteases elastase, cathepsin G, proteinase-3, chymase, chymotrypsin, and kallikrein-3. Also functions as a potent intracellular inhibitor of granzyme H. [UniProt]
Calculated Mw	43 kDa
Cellular Localization	Cytoplasm, Cytoplasmic granule. [UniProt]

## Images



ARG58658 anti-SERPINB1 antibody ICC/IF image

Immunofluorescence: HeLa cells stained with ARG58658 anti-SERPINB1 antibody.



MCF7

ARG58658 anti-SERPINB1 antibody WB image

Western blot: 25 µg of MCF7 cell lysate stained with ARG58658 anti-SERPINB1 antibody at 1:1000 dilution.