

ARG58682 anti-ETV1 / ER81 antibody

Package: 100 µl
Store at: -20°C

Summary

Product Description	Rabbit Polyclonal antibody recognizes ETV1 / ER81
Tested Reactivity	Hu, Ms, Rat
Tested Application	ICC/IF, IHC-P
Host	Rabbit
Clonality	Polyclonal
Isotype	IgG
Target Name	ETV1 / ER81
Species	Human
Immunogen	Recombinant fusion protein corresponding to aa. 80-300 of Human ETV1 (NP_004947.2).
Conjugation	Un-conjugated
Alternate Names	ER81; Ets-related protein 81; ETS translocation variant 1

Application Instructions

Application table	Application	Dilution
	ICC/IF	1:50 - 1:200
	IHC-P	1:50 - 1:200
Application Note	* The dilutions indicate recommended starting dilutions and the optimal dilutions or concentrations should be determined by the scientist.	

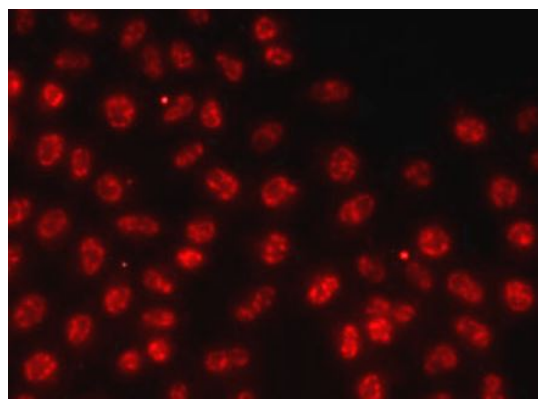
Properties

Form	Liquid
Purification	Affinity purified.
Buffer	PBS (pH 7.3), 0.02% Sodium azide and 50% Glycerol.
Preservative	0.02% Sodium azide
Stabilizer	50% Glycerol
Storage instruction	For continuous use, store undiluted antibody at 2-8°C for up to a week. For long-term storage, aliquot and store at -20°C. Storage in frost free freezers is not recommended. Avoid repeated freeze/thaw cycles. Suggest spin the vial prior to opening. The antibody solution should be gently mixed before use.
Note	For laboratory research only, not for drug, diagnostic or other use.

Bioinformation

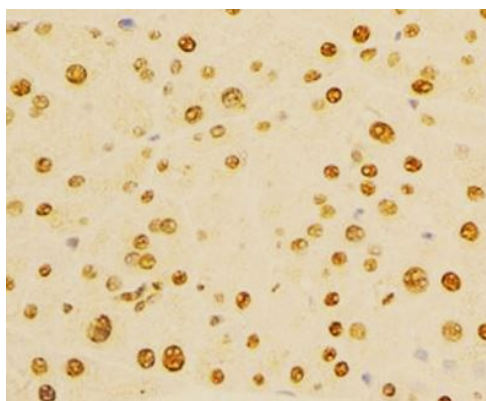
Gene Symbol	ETV1
Gene Full Name	ets variant 1
Background	This gene encodes a member of the ETS (E twenty-six) family of transcription factors. The ETS proteins regulate many target genes that modulate biological processes like cell growth, angiogenesis, migration, proliferation and differentiation. All ETS proteins contain an ETS DNA-binding domain that binds to DNA sequences containing the consensus 5'-CGGA[AT]-3'. The protein encoded by this gene contains a conserved short acidic transactivation domain (TAD) in the N-terminal region, in addition to the ETS DNA-binding domain in the C-terminal region. This gene is involved in chromosomal translocations, which result in multiple fusion proteins including EWS-ETV1 in Erwing sarcoma and at least 10 ETV1 partners (see PMID: 19657377, Table 1) in prostate cancer. In addition to chromosomal rearrangement, this gene is overexpressed in prostate cancer, melanoma and gastrointestinal stromal tumor. Multiple alternatively spliced transcript variants encoding different isoforms have been identified. [provided by RefSeq, Aug 2011]
Function	Transcriptional activator that binds to DNA sequences containing the consensus pentanucleotide 5'-CGGA[AT]-3'. [UniProt]
Calculated Mw	55 kDa
PTM	Sumoylated. Phosphorylated at Ser-191 and Ser-216 by RPS6KA1 and RPS6KA5; phosphorylation activates transcriptional activity. [UniProt]
Cellular Localization	Nucleus. [UniProt]

Images



ARG58682 anti-ETV1 / ER81 antibody ICC/IF image

Immunofluorescence: A549 cells stained with ARG58682 anti-ETV1 / ER81 antibody.



ARG58682 anti-ETV1 / ER81 antibody IHC-P image

Immunohistochemistry: Paraffin-embedded Mouse pancreas stained with ARG58682 anti-ETV1 / ER81 antibody at 1:100 dilution.