

## ARG58702 anti-GBP1 antibody

Package: 50 µg  
Store at: -20°C

### Summary

Product Description	Rabbit Polyclonal antibody recognizes GBP1
Tested Reactivity	Hu
Tested Application	WB
Host	Rabbit
Clonality	Polyclonal
Isotype	IgG
Target Name	GBP1
Species	Human
Immunogen	Synthetic peptide corresponding to aa. 566-589 of Human GBP1 (QKESRIMKNEIQDLQTKMRRRKAC).
Conjugation	Un-conjugated
Alternate Names	Interferon-induced guanylate-binding protein 1; GTP-binding protein 1; HuGBP-1; GBP-1; Guanine nucleotide-binding protein 1

### Application Instructions

Application table	Application	Dilution
	WB	0.1 - 0.5 µg/ml
Application Note	* The dilutions indicate recommended starting dilutions and the optimal dilutions or concentrations should be determined by the scientist.	

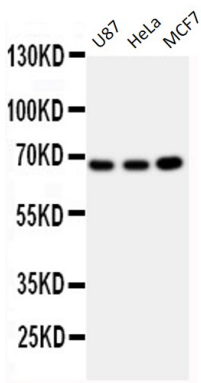
### Properties

Form	Liquid
Purification	Affinity purification with immunogen.
Buffer	0.9% NaCl, 0.2% Na <sub>2</sub> HPO <sub>4</sub> , 0.05% Thimerosal, 0.05% Sodium azide and 5% BSA.
Preservative	0.05% Thimerosal and 0.05% Sodium azide
Stabilizer	5% BSA
Concentration	0.5 mg/ml
Storage instruction	For continuous use, store undiluted antibody at 2-8°C for up to a week. For long-term storage, aliquot and store at -20°C or below. Storage in frost free freezers is not recommended. Avoid repeated freeze/thaw cycles. Suggest spin the vial prior to opening. The antibody solution should be gently mixed before use.
Note	For laboratory research only, not for drug, diagnostic or other use.

Bioinformation

Gene Symbol	GBP1
Gene Full Name	guanylate binding protein 1, interferon-inducible
Background	Guanylate binding protein expression is induced by interferon. Guanylate binding proteins are characterized by their ability to specifically bind guanine nucleotides (GMP, GDP, and GTP) and are distinguished from the GTP-binding proteins by the presence of 2 binding motifs rather than 3. [provided by RefSeq, Jul 2008]
Function	Hydrolyzes GTP to GMP in two consecutive cleavage reactions. Exhibits antiviral activity against influenza virus. Promote oxidative killing and deliver antimicrobial peptides to autophagolysosomes, providing broad host protection against different pathogen classes. [UniProt]
Calculated Mw	68 kDa
PTM	Isoprenylation is required for proper subcellular location. [UniProt]
Cellular Localization	Cytoplasm. Golgi apparatus membrane; Lipid- anchor; Cytoplasmic side. Secreted. Secreted from endothelial cells in the cerebrospinal fluid, upon bacterial challenge and independently of interferon-gamma induction. Golgi membrane localization requires isoprenylation and the presence of another IFN-gamma-induced factor. [UniProt]

Images



ARG58702 anti-GBP1 antibody WB image

Western blot: 40 µg of U87, HeLa and MCF7 whole cell lysates stained with ARG58702 anti-GBP1 antibody at 0.5 µg/ml dilution.