

ARG58740 anti-FLII antibody

Package: 100 µl
Store at: -20°C

Summary

Product Description	Rabbit Polyclonal antibody recognizes FLII
Tested Reactivity	Hu, Ms, Rat
Tested Application	IHC-P, WB
Host	Rabbit
Clonality	Polyclonal
Isotype	IgG
Target Name	FLII
Species	Human
Immunogen	Recombinant fusion protein corresponding to aa. 400-660 of Human FLII (NP_002009.1).
Conjugation	Un-conjugated
Alternate Names	FLI; FLIL; Fli1; Protein flightless-1 homolog

Application Instructions

Application table	Application	Dilution
	IHC-P	1:50 - 1:200
	WB	1:200 - 1:2000
Application Note	* The dilutions indicate recommended starting dilutions and the optimal dilutions or concentrations should be determined by the scientist.	
Positive Control	293T	
Observed Size	160 kDa	

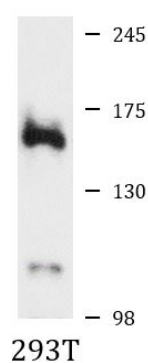
Properties

Form	Liquid
Purification	Affinity purified.
Buffer	PBS (pH 7.3), 0.02% Sodium azide and 50% Glycerol.
Preservative	0.02% Sodium azide
Stabilizer	50% Glycerol
Storage instruction	For continuous use, store undiluted antibody at 2-8°C for up to a week. For long-term storage, aliquot and store at -20°C. Storage in frost free freezers is not recommended. Avoid repeated freeze/thaw cycles. Suggest spin the vial prior to opening. The antibody solution should be gently mixed before use.
Note	For laboratory research only, not for drug, diagnostic or other use.

Bioinformation

Gene Symbol	FLII
Gene Full Name	flightless I actin binding protein
Background	This gene encodes a protein with a gelsolin-like actin binding domain and an N-terminal leucine-rich repeat-protein protein interaction domain. The protein is similar to a Drosophila protein involved in early embryogenesis and the structural organization of indirect flight muscle. The gene is located within the Smith-Magenis syndrome region on chromosome 17. [provided by RefSeq, Jul 2008]
Function	May play a role as coactivator in transcriptional activation by hormone-activated nuclear receptors (NR) and acts in cooperation with NCOA2 and CARM1. Involved in estrogen hormone signaling. Involved in early embryonic development (By similarity). May play a role in regulation of cytoskeletal rearrangements involved in cytokinesis and cell migration, by inhibiting Rac1-dependent paxillin phosphorylation. [UniProt]
Calculated Mw	145 kDa
Cellular Localization	Cell junction, Cytoplasm, Nucleus, centrosome, cytoskeleton, focal adhesion, microtubule organizing center. [UniProt]

Images



ARG58740 anti-FLII antibody WB image

Western blot: 25 µg of 293T cell lysate stained with ARG58740 anti-FLII antibody at 1:1000 dilution.