

## ARG58748 anti-TIM3 antibody

Package: 50 µg  
Store at: -20°C

### Summary

Product Description	Rabbit Polyclonal antibody recognizes TIM3
Tested Reactivity	Hu
Tested Application	IHC-P, WB
Host	Rabbit
Clonality	Polyclonal
Isotype	IgG
Target Name	TIM3
Species	Human
Immunogen	Synthetic peptide corresponding to 16 aa. (near the N-terminus) of Human TIM3.
Conjugation	Un-conjugated
Alternate Names	KIM-3; TIM3; TIMD-3; Tim-3; TIM-3; CD366; T-cell immunoglobulin and mucin domain-containing protein 3; TIMD3; T-cell membrane protein 3; HAVcr-2; T-cell immunoglobulin mucin receptor 3; Hepatitis A virus cellular receptor 2

### Application Instructions

Application table	Application	Dilution
	IHC-P	2 µg/ml
	WB	1 - 2 µg/ml
Application Note	* The dilutions indicate recommended starting dilutions and the optimal dilutions or concentrations should be determined by the scientist.	
Positive Control	Jurkat	
Observed Size	37 kDa	

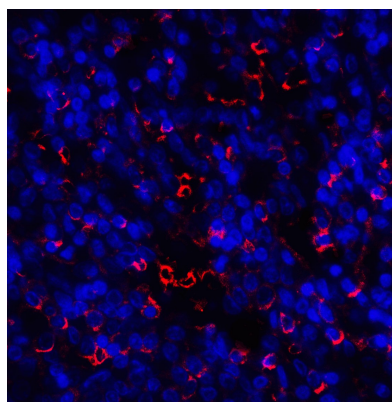
### Properties

Form	Liquid
Purification	Affinity purification with immunogen.
Buffer	PBS and 0.02% Sodium azide.
Preservative	0.02% Sodium azide
Concentration	1 mg/ml
Storage instruction	For continuous use, store undiluted antibody at 2-8°C for up to a week. For long-term storage, aliquot and store at -20°C or below. Storage in frost free freezers is not recommended. Avoid repeated freeze/thaw cycles. Suggest spin the vial prior to opening. The antibody solution should be gently mixed before use.

## Bioinformation

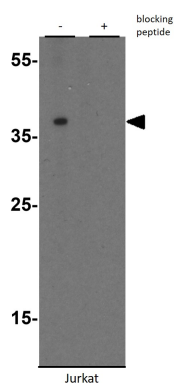
Gene Symbol	HAVCR2
Gene Full Name	hepatitis A virus cellular receptor 2
Background	The protein encoded by this gene belongs to the immunoglobulin superfamily, and TIM family of proteins. CD4-positive T helper lymphocytes can be divided into types 1 (Th1) and 2 (Th2) on the basis of their cytokine secretion patterns. Th1 cells are involved in cell-mediated immunity to intracellular pathogens and delayed-type hypersensitivity reactions, whereas, Th2 cells are involved in the control of extracellular helminthic infections and the promotion of atopic and allergic diseases. This protein is a Th1-specific cell surface protein that regulates macrophage activation, and inhibits Th1-mediated auto- and alloimmune responses, and promotes immunological tolerance. [provided by RefSeq, Sep 2011]
Function	Regulates macrophage activation. Inhibits T-helper type 1 lymphocyte (Th1)-mediated auto- and alloimmune responses and promotes immunological tolerance. May be also involved in T-cell homing. Receptor for LGALS9. [UniProt]
Calculated Mw	33 kDa
PTM	O-glycosylated with core 1 or possibly core 8 glycans.  Phosphorylated on tyrosine residues; modestly increased after TCR/CD28 stimulation. Can be phosphorylated in the cytoplasmic domain by FYN (By similarity). Phosphorylation at Tyr-265 is increased by stimulation with ligand LGALS9. [UniProt]

## Images



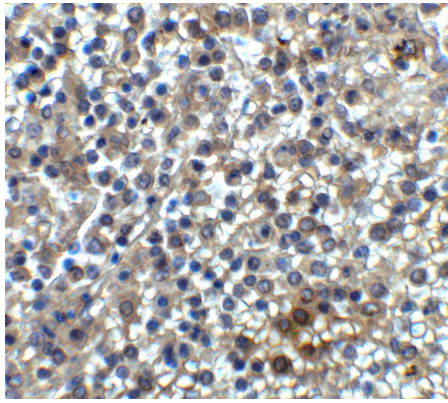
ARG58748 anti-TIM3 antibody IHC image

Immunohistochemistry: Human spleen tissue stained with ARG58748 anti-TIM3 antibody at 20 µg/ml dilution.



ARG58748 anti-TIM3 antibody WB image

Western blot: Jurkat cell lysate stained with ARG58748 anti-TIM3 antibody at 1 µg/ml in the absence (-) or the presence (+) of blocking peptide.



ARG58748 anti-TIM3 antibody IHC-P image

Immunohistochemistry: Human spleen tissue stained with ARG58748 anti-TIM3 antibody at 2 µg/ml dilution.