

## ARG58787 anti-HLF antibody

Package: 50 µg  
Store at: -20°C

### Summary

Product Description	Rabbit Polyclonal antibody recognizes HLF
Tested Reactivity	Hu, Ms, Rat
Tested Application	FACS, ICC/IF, WB
Host	Rabbit
Clonality	Polyclonal
Isotype	IgG
Target Name	HLF
Species	Human
Immunogen	Synthetic peptide corresponding to a sequence of Human HLF (DDLKDDKYWARRRKNNMAAKRSRDARRLKE).
Conjugation	Un-conjugated
Alternate Names	Hepatic leukemia factor

### Application Instructions

Application table	Application	Dilution
	FACS	1 - 3 µg/10 <sup>6</sup> cells
	ICC/IF	5 µg/ml
	WB	0.1 - 0.5 µg/ml
Application Note	* The dilutions indicate recommended starting dilutions and the optimal dilutions or concentrations should be determined by the scientist.	

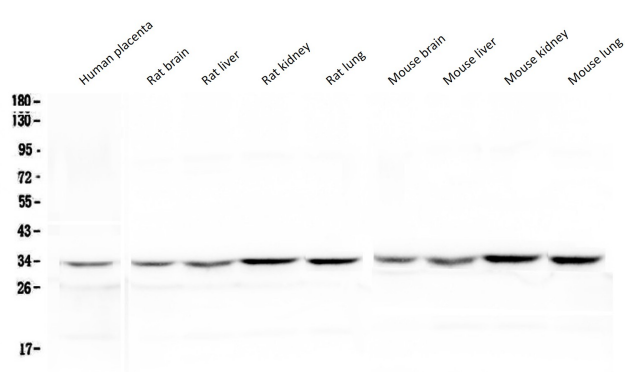
### Properties

Form	Liquid
Purification	Affinity purification with immunogen.
Buffer	0.9% NaCl, 0.2% Na <sub>2</sub> HPO <sub>4</sub> and 4% Trehalose.
Stabilizer	4% Trehalose
Concentration	0.5 mg/ml
Storage instruction	For continuous use, store undiluted antibody at 2-8°C for up to a week. For long-term storage, aliquot and store at -20°C or below. Storage in frost free freezers is not recommended. Avoid repeated freeze/thaw cycles. Suggest spin the vial prior to opening. The antibody solution should be gently mixed before use.
Note	For laboratory research only, not for drug, diagnostic or other use.

Bioinformation

Gene Symbol	HLF
Gene Full Name	hepatic leukemia factor
Background	This gene encodes a member of the proline and acidic-rich (PAR) protein family, a subset of the bZIP transcription factors. The encoded protein forms homodimers or heterodimers with other PAR family members and binds sequence-specific promoter elements to activate transcription. Chromosomal translocations fusing portions of this gene with the E2A gene cause a subset of childhood B-lineage acute lymphoid leukemias. Alternatively spliced transcript variants have been described, but their biological validity has not been determined. [provided by RefSeq, Jul 2008]
Calculated Mw	33 kDa
Cellular Localization	Nucleus. [UniProt]

Images



ARG58787 anti-HLF antibody WB image

Western blot: 50 µg of samples under reducing conditions. Human placenta, Rat brain, Rat liver, Rat kidney, Rat lung, Mouse brain, Mouse liver, Mouse kidney and Mouse lung lysates stained with ARG58787 anti-HLF antibody at 0.5 µg/ml, overnight at 4°C.