

## ARG58790 anti-GLO1 antibody

Package: 50 µg  
Store at: -20°C

### Summary

Product Description	Rabbit Polyclonal antibody recognizes GLO1
Tested Reactivity	Hu, Ms, Rat
Tested Application	IHC-P, WB
Host	Rabbit
Clonality	Polyclonal
Isotype	IgG
Target Name	GLO1
Species	Human
Immunogen	Recombinant protein corresponding to A2-M184 of Human GLO1.
Conjugation	Un-conjugated
Alternate Names	GLO1; Glyoxalase I; Lactoylglutathione Lyase; GLOD1; S-D-Lactoylglutathione Methylglyoxal Lyase; Ketone-Aldehyde Mutase; Methylglyoxalase; Aldoketomutase; EC 4.4.1.5; Glx I; Epididymis Secretory Protein Li 74; Glyoxalase Domain Containing 1; Lactoyl Glutathione Lyase; HEL-S-74; GLYI

### Application Instructions

Application table	Application	Dilution
	IHC-P	0.5 - 1 µg/ml
	WB	0.1 - 0.5 µg/ml
Application Note	IHC-P: Antigen Retrieval: Heat mediated was performed in Citrate buffer (pH 6.0) for 20 min. * The dilutions indicate recommended starting dilutions and the optimal dilutions or concentrations should be determined by the scientist.	

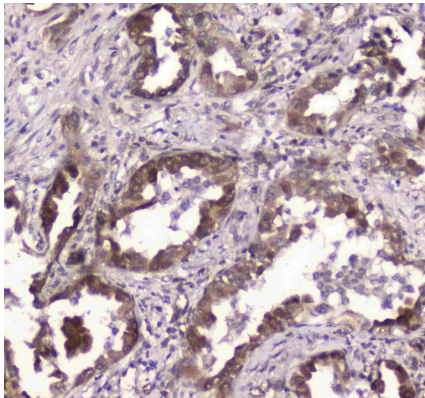
### Properties

Form	Liquid
Purification	Affinity purification with immunogen.
Buffer	0.9% NaCl, 0.2% Na <sub>2</sub> HPO <sub>4</sub> , 0.05% Sodium azide and 4% Trehalose.
Preservative	0.05% Sodium azide
Stabilizer	4% Trehalose
Concentration	0.5 mg/ml
Storage instruction	For continuous use, store undiluted antibody at 2-8°C for up to a week. For long-term storage, aliquot and store at -20°C or below. Storage in frost free freezers is not recommended. Avoid repeated freeze/thaw cycles. Suggest spin the vial prior to opening. The antibody solution should be gently mixed before use.

Bioinformation

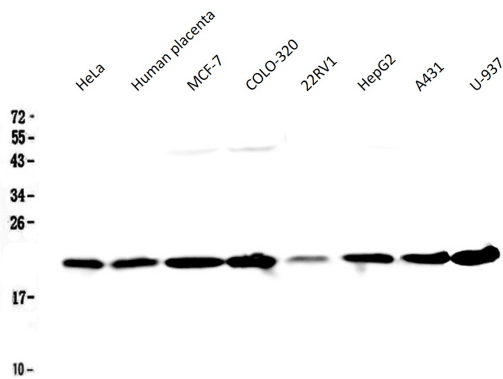
Gene Symbol	GLO1
Gene Full Name	glyoxalase I
Background	The enzyme encoded by this gene is responsible for the catalysis and formation of S-lactoyl-glutathione from methylglyoxal condensation and reduced glutathione. Glyoxalase I is linked to HLA and is localized to 6p21.3-p21.1, between HLA and the centromere. [provided by RefSeq, Jul 2008]
Function	Catalyzes the conversion of hemimercaptal, formed from methylglyoxal and glutathione, to S-lactoylglutathione. [UniProt]
Calculated Mw	21 kDa
PTM	Acetylation, Disulfide bond, Glutathionylation, Phosphoprotein. [UniProt]

Images



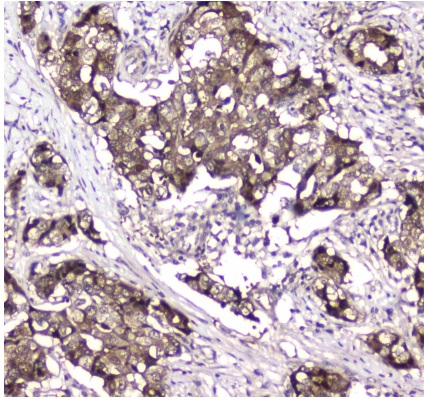
**ARG58790 anti-GLO1 antibody IHC-P image**

Immunohistochemistry: Paraffin-embedded Human lung cancer tissue. Antigen Retrieval: Heat mediated was performed in Citrate buffer (pH 6.0, epitope retrieval solution) for 20 min. The tissue section was blocked with 10% goat serum. The tissue section was then stained with ARG58790 anti-GLO1 antibody at 1 µg/ml, overnight at 4°C.



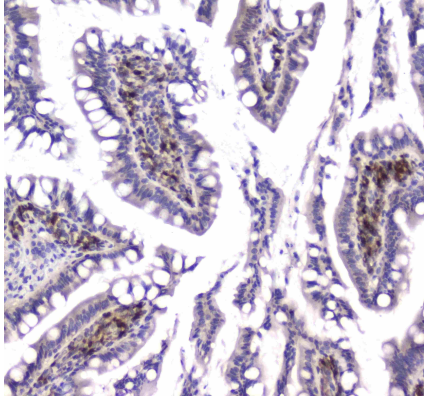
**ARG58790 anti-GLO1 antibody WB image**

Western blot: 50 µg of samples under reducing conditions. HeLa, Human placenta, MCF-7, COLO-320, 22RV1, HepG2, A431 and U-937 cell lysates stained with ARG58790 anti-GLO1 antibody at 0.5 µg/ml, overnight at 4°C.



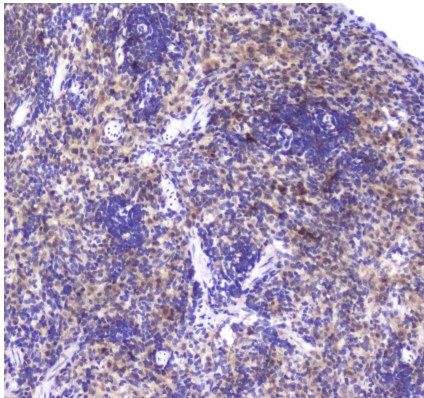
ARG58790 anti-GLO1 antibody IHC-P image

Immunohistochemistry: Paraffin-embedded Human mammary cancer tissue. Antigen Retrieval: Heat mediated was performed in Citrate buffer (pH 6.0, epitope retrieval solution) for 20 min. The tissue section was blocked with 10% goat serum. The tissue section was then stained with ARG58790 anti-GLO1 antibody at 1 µg/ml, overnight at 4°C.



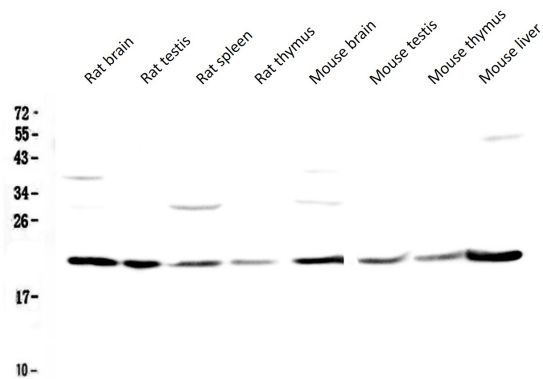
ARG58790 anti-GLO1 antibody IHC-P image

Immunohistochemistry: Paraffin-embedded Rat small intestine tissue. Antigen Retrieval: Heat mediated was performed in Citrate buffer (pH 6.0, epitope retrieval solution) for 20 min. The tissue section was blocked with 10% goat serum. The tissue section was then stained with ARG58790 anti-GLO1 antibody at 1 µg/ml, overnight at 4°C.



ARG58790 anti-GLO1 antibody IHC-P image

Immunohistochemistry: Paraffin-embedded Rat spleen tissue. Antigen Retrieval: Heat mediated was performed in Citrate buffer (pH 6.0, epitope retrieval solution) for 20 min. The tissue section was blocked with 10% goat serum. The tissue section was then stained with ARG58790 anti-GLO1 antibody at 1 µg/ml, overnight at 4°C.



ARG58790 anti-GLO1 antibody WB image

Western blot: 50 µg of samples under reducing conditions. Rat brain, Rat testis, Rat spleen, Rat thymus, Mouse brain, Mouse testis, Mouse thymus and Mouse liver tissue lysates stained with ARG58790 anti-GLO1 antibody at 0.5 µg/ml, overnight at 4°C.