

ARG58842 anti-Lumican antibody

Package: 50 µg
Store at: -20°C

Summary

Product Description	Rabbit Polyclonal antibody recognizes Lumican
Tested Reactivity	Hu
Predict Reactivity	Ms, Rat
Tested Application	IHC-P
Host	Rabbit
Clonality	Polyclonal
Isotype	IgG
Target Name	Lumican
Species	Human
Immunogen	Recombinant protein corresponding to A50-N338 of Human Lumican.
Conjugation	Un-conjugated
Alternate Names	LDC; Keratan sulfate proteoglycan lumican; Lumican; SLRR2D; KSPG lumican

Application Instructions

Application table	Application	Dilution
	IHC-P	0.5 - 1 µg/ml
Application Note	IHC-P: Antigen Retrieval: Heat mediated was performed in Citrate buffer (pH 6.0) for 20 min. * The dilutions indicate recommended starting dilutions and the optimal dilutions or concentrations should be determined by the scientist.	

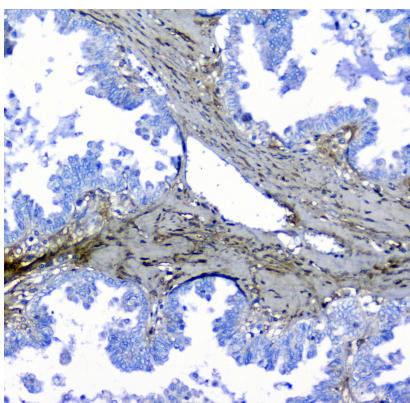
Properties

Form	Liquid
Purification	Affinity purification with immunogen.
Buffer	0.9% NaCl, 0.2% Na ₂ HPO ₄ , 0.05% Sodium azide and 4% Trehalose.
Preservative	0.05% Sodium azide
Stabilizer	4% Trehalose
Concentration	0.5 mg/ml
Storage instruction	For continuous use, store undiluted antibody at 2-8°C for up to a week. For long-term storage, aliquot and store at -20°C or below. Storage in frost free freezers is not recommended. Avoid repeated freeze/thaw cycles. Suggest spin the vial prior to opening. The antibody solution should be gently mixed before use.
Note	For laboratory research only, not for drug, diagnostic or other use.

Bioinformation

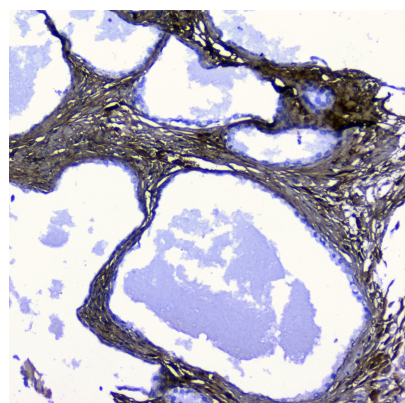
Gene Symbol	LUM
Gene Full Name	lumican
Background	This gene encodes a member of the small leucine-rich proteoglycan (SLRP) family that includes decorin, biglycan, fibromodulin, keratocan, epiphykan, and osteoglycin. In these bifunctional molecules, the protein moiety binds collagen fibrils and the highly charged hydrophilic glycosaminoglycans regulate interfibrillar spacings. Lumican is the major keratan sulfate proteoglycan of the cornea but is also distributed in interstitial collagenous matrices throughout the body. Lumican may regulate collagen fibril organization and circumferential growth, corneal transparency, and epithelial cell migration and tissue repair. [provided by RefSeq, Jul 2008]
Calculated Mw	38 kDa
PTM	Sulfated on tyrosine residue(s). [UniProt]

Images



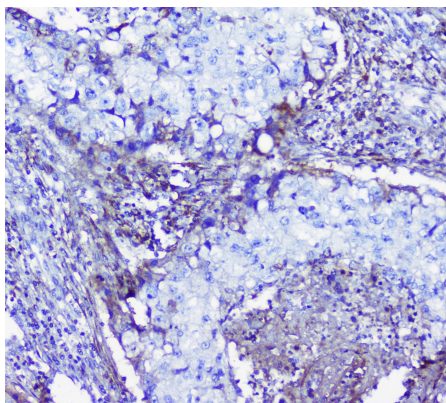
ARG58842 anti-Lumican antibody IHC-P image

Immunohistochemistry: Paraffin-embedded Human ovary cancer tissue. Antigen Retrieval: Heat mediated was performed in Citrate buffer (pH 6.0, epitope retrieval solution) for 20 min. The tissue section was blocked with 10% goat serum. The tissue section was then stained with ARG58842 anti-Lumican antibody at 1 µg/ml, overnight at 4°C.



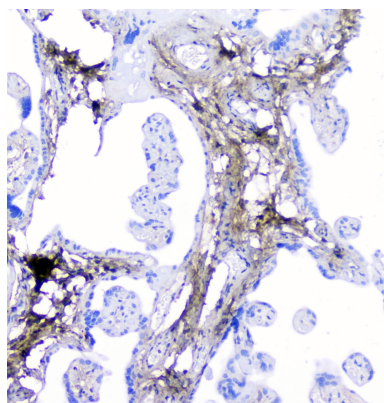
ARG58842 anti-Lumican antibody IHC-P image

Immunohistochemistry: Paraffin-embedded Human pancreatic cancer tissue. Antigen Retrieval: Heat mediated was performed in Citrate buffer (pH 6.0, epitope retrieval solution) for 20 min. The tissue section was blocked with 10% goat serum. The tissue section was then stained with ARG58842 anti-Lumican antibody at 1 µg/ml, overnight at 4°C.



ARG58842 anti-Lumican antibody IHC-P image

Immunohistochemistry: Paraffin-embedded Human lung cancer tissue. Antigen Retrieval: Heat mediated was performed in Citrate buffer (pH 6.0, epitope retrieval solution) for 20 min. The tissue section was blocked with 10% goat serum. The tissue section was then stained with ARG58842 anti-Lumican antibody at 1 µg/ml, overnight at 4°C.



ARG58842 anti-Lumican antibody IHC-P image

Immunohistochemistry: Paraffin-embedded Human placenta tissue. Antigen Retrieval: Heat mediated was performed in Citrate buffer (pH 6.0, epitope retrieval solution) for 20 min. The tissue section was blocked with 10% goat serum. The tissue section was then stained with ARG58842 anti-Lumican antibody at 1 µg/ml, overnight at 4°C.