

## ARG58863 anti-GRK6 antibody

Package: 100 µl  
Store at: -20°C

### Summary

Product Description	Rabbit Polyclonal antibody recognizes GRK6
Tested Reactivity	Hu, Ms, Rat
Tested Application	WB
Host	Rabbit
Clonality	Polyclonal
Isotype	IgG
Target Name	GRK6
Species	Human
Immunogen	Recombinant fusion protein corresponding to aa. 1-170 of Human GRK6 (NP_001004106.1).
Conjugation	Un-conjugated
Alternate Names	G protein-coupled receptor kinase GRK6; G protein-coupled receptor kinase 6; EC 2.7.11.16; GPRK6

### Application Instructions

Application table	Application	Dilution
	WB	1:500 - 1:2000
Application Note	* The dilutions indicate recommended starting dilutions and the optimal dilutions or concentrations should be determined by the scientist.	
Positive Control	Jurkat	
Observed Size	65 kDa	

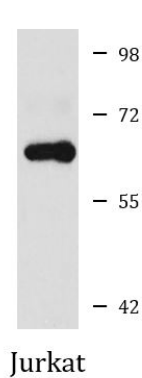
### Properties

Form	Liquid
Purification	Affinity purified.
Buffer	PBS (pH 7.3), 0.02% Sodium azide and 50% Glycerol.
Preservative	0.02% Sodium azide
Stabilizer	50% Glycerol
Storage instruction	For continuous use, store undiluted antibody at 2-8°C for up to a week. For long-term storage, aliquot and store at -20°C. Storage in frost free freezers is not recommended. Avoid repeated freeze/thaw cycles. Suggest spin the vial prior to opening. The antibody solution should be gently mixed before use.
Note	For laboratory research only, not for drug, diagnostic or other use.

Bioinformation

Gene Symbol	GRK6
Gene Full Name	G protein-coupled receptor kinase 6
Background	This gene encodes a member of the guanine nucleotide-binding protein (G protein)-coupled receptor kinase subfamily of the Ser/Thr protein kinase family. The protein phosphorylates the activated forms of G protein-coupled receptors thus initiating their deactivation. Several transcript variants encoding different isoforms have been described for this gene. [provided by RefSeq, Jul 2008]
Function	Specifically phosphorylates the activated forms of G protein-coupled receptors. Such receptor phosphorylation initiates beta-arrestin-mediated receptor desensitization, internalization, and signaling events leading to their desensitization. Seems to be involved in the desensitization of D2-like dopamine receptors in striatum and chemokine receptor CXCR4 which is critical for CXCL12-induced cell chemotaxis (By similarity). Phosphorylates rhodopsin (RHO) (in vitro) and a non G-protein-coupled receptor: LRP6 during Wnt signaling (in vitro). [UniProt]
Calculated Mw	66 kDa
PTM	It is uncertain whether palmitoylation is on Cys-561 and/or Cys-562 and/or Cys-565. [UniProt]
Cellular Localization	Lipid-anchor, Membrane. [UniProt]

Images



ARG58863 anti-GRK6 antibody WB image

Western blot: 25 µg of Jurkat cell lysate stained with ARG58863 anti-GRK6 antibody at 1:1000 dilution.