

ARG58864 anti-GPD2 antibody

Package: 100 µl
Store at: -20°C

Summary

Product Description	Rabbit Polyclonal antibody recognizes GPD2
Tested Reactivity	Hu, Ms, Rat
Tested Application	WB
Host	Rabbit
Clonality	Polyclonal
Isotype	IgG
Target Name	GPD2
Species	Human
Immunogen	Recombinant fusion protein corresponding to aa. 25-325 of Human GPD2 (NP_000399.3).
Conjugation	Un-conjugated
Alternate Names	GDH2; GPDH; GPDH-M; EC 1.1.5.3; GPD-M; mGPDH; Glycerol-3-phosphate dehydrogenase, mitochondrial; mtGPD

Application Instructions

Application table	Application	Dilution
	WB	1:500 - 1:2000
Application Note	* The dilutions indicate recommended starting dilutions and the optimal dilutions or concentrations should be determined by the scientist.	
Positive Control	SW480	
Observed Size	80 kDa	

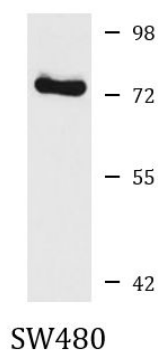
Properties

Form	Liquid
Purification	Affinity purified.
Buffer	PBS (pH 7.3), 0.02% Sodium azide and 50% Glycerol.
Preservative	0.02% Sodium azide
Stabilizer	50% Glycerol
Storage instruction	For continuous use, store undiluted antibody at 2-8°C for up to a week. For long-term storage, aliquot and store at -20°C. Storage in frost free freezers is not recommended. Avoid repeated freeze/thaw cycles. Suggest spin the vial prior to opening. The antibody solution should be gently mixed before use.
Note	For laboratory research only, not for drug, diagnostic or other use.

Bioinformation

Gene Symbol	GPD2
Gene Full Name	glycerol-3-phosphate dehydrogenase 2 (mitochondrial)
Background	The protein encoded by this gene localizes to the inner mitochondrial membrane and catalyzes the conversion of glycerol-3-phosphate to dihydroxyacetone phosphate, using FAD as a cofactor. Along with GDP1, the encoded protein constitutes the glycerol phosphate shuttle, which reoxidizes NADH formed during glycolysis. Two transcript variants encoding the same protein have been found for this gene.[provided by RefSeq, Jan 2010]
Calculated Mw	81 kDa
Cellular Localization	Mitochondrion. [UniProt]

Images



ARG58864 anti-GPD2 antibody WB image

Western blot: 25 µg of SW480 cell lysate stained with ARG58864 anti-GPD2 antibody at 1:1000 dilution.