

## ARG58875 anti-GLI1 antibody

Package: 100 µl  
Store at: -20°C

### Summary

Product Description	Rabbit Polyclonal antibody recognizes GLI1
Tested Reactivity	Hu, Ms, Rat
Tested Application	WB
Host	Rabbit
Clonality	Polyclonal
Isotype	IgG
Target Name	GLI1
Species	Human
Immunogen	Recombinant protein of Human GLI1.
Conjugation	Un-conjugated
Alternate Names	GLI; Glioma-associated oncogene; Zinc finger protein GLI1; Oncogene GLI

### Application Instructions

Application table	Application	Dilution
	WB	1:500 - 1:2000
Application Note	* The dilutions indicate recommended starting dilutions and the optimal dilutions or concentrations should be determined by the scientist.	
Positive Control	Mouse liver	

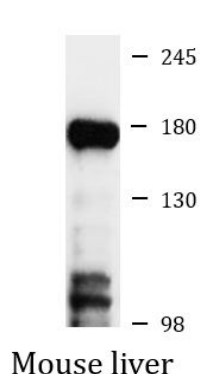
### Properties

Form	Liquid
Purification	Affinity purified.
Buffer	PBS (pH 7.3), 0.02% Sodium azide and 50% Glycerol.
Preservative	0.02% Sodium azide
Stabilizer	50% Glycerol
Storage instruction	For continuous use, store undiluted antibody at 2-8°C for up to a week. For long-term storage, aliquot and store at -20°C. Storage in frost free freezers is not recommended. Avoid repeated freeze/thaw cycles. Suggest spin the vial prior to opening. The antibody solution should be gently mixed before use.
Note	For laboratory research only, not for drug, diagnostic or other use.

### Bioinformation

Gene Symbol	GLI1
Gene Full Name	GLI family zinc finger 1
Background	This gene encodes a member of the Kruppel family of zinc finger proteins. The encoded transcription factor is activated by the sonic hedgehog signal transduction cascade and regulates stem cell proliferation. The activity and nuclear localization of this protein is negatively regulated by p53 in an inhibitory loop. Multiple transcript variants encoding different isoforms have been found for this gene. [provided by RefSeq, May 2009]
Function	<p>Acts as a transcriptional activator. Binds to the DNA consensus sequence 5'-GACCACCCA-3'. May regulate the transcription of specific genes during normal development. May play a role in craniofacial development and digital development, as well as development of the central nervous system and gastrointestinal tract. Mediates SHH signaling. Plays a role in cell proliferation and differentiation via its role in SHH signaling (Probable).</p> <p>Isoform 2: Acts as a transcriptional activator, but activates a different set of genes than isoform 1. Activates expression of CD24, unlike isoform 1. Mediates SHH signaling. Promotes cancer cell migration. [UniProt]</p>
Calculated Mw	118 kDa
PTM	<p>Phosphorylated in vitro by ULK3.</p> <p>Acetylation at Lys-518 down-regulates transcriptional activity. Deacetylated by HDAC1. [UniProt]</p>
Cellular Localization	Cytoplasm, Nucleus, Cytoplasm, Nucleus. [UniProt]

## Images



ARG58875 anti-GLI1 antibody WB image

Western blot: 25 µg of Mouse liver lysate stained with ARG58875 anti-GLI1 antibody at 1:1000 dilution.