

ARG58889 anti-GOLGA1 / Golgin 97 antibody

Package: 100 µl
Store at: -20°C

Summary

Product Description	Rabbit Polyclonal antibody recognizes GOLGA1 / Golgin 97
Tested Reactivity	Hu, Ms, Rat
Tested Application	ICC/IF, WB
Host	Rabbit
Clonality	Polyclonal
Isotype	IgG
Target Name	GOLGA1 / Golgin 97
Species	Human
Immunogen	Recombinant fusion protein corresponding to aa. 1-300 of Human GOLGA1 / Golgin 97 (NP_002068.1).
Conjugation	Un-conjugated
Alternate Names	Golgin subfamily A member 1; Golgin-97; golgin-97

Application Instructions

Application table	Application	Dilution
	ICC/IF	1:50 - 1:200
	WB	1:500 - 1:2000
Application Note	* The dilutions indicate recommended starting dilutions and the optimal dilutions or concentrations should be determined by the scientist.	
Positive Control	Rat pancreas	
Observed Size	105 kDa	

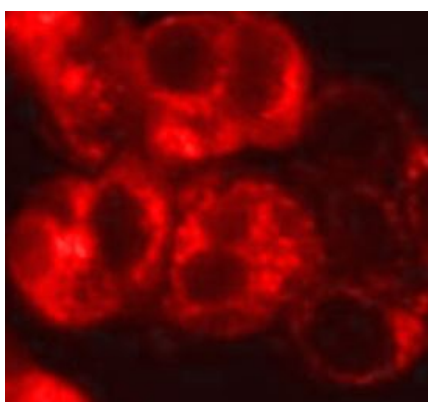
Properties

Form	Liquid
Purification	Affinity purified.
Buffer	PBS (pH 7.3), 0.02% Sodium azide and 50% Glycerol.
Preservative	0.02% Sodium azide
Stabilizer	50% Glycerol
Storage instruction	For continuous use, store undiluted antibody at 2-8°C for up to a week. For long-term storage, aliquot and store at -20°C. Storage in frost free freezers is not recommended. Avoid repeated freeze/thaw cycles. Suggest spin the vial prior to opening. The antibody solution should be gently mixed before use.
Note	For laboratory research only, not for drug, diagnostic or other use.

Bioinformation

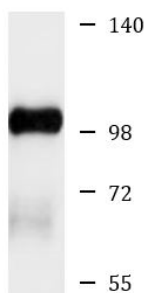
Gene Symbol	GOLGA1
Gene Full Name	golgin A1
Background	The Golgi apparatus, which participates in glycosylation and transport of proteins and lipids in the secretory pathway, consists of a series of stacked cisternae (flattened membrane sacs). Interactions between the Golgi and microtubules are thought to be important for the reorganization of the Golgi after it fragments during mitosis. This gene encodes one of the golgins, a family of proteins localized to the Golgi. This encoded protein is associated with Sjogren's syndrome. [provided by RefSeq, Feb 2010]
Function	Probably involved in maintaining Golgi structure. [UniProt]
Calculated Mw	88 kDa
Cellular Localization	Golgi apparatus, Golgi stack membrane, Peripheral membrane protein. [UniProt]

Images



ARG58889 anti-GOLGA1 / Golgin 97 antibody ICC/IF image

Immunofluorescence: HepG2 cells stained with ARG58889 anti-GOLGA1 / Golgin 97 antibody at 1:150 dilution.



Rat pancreas

ARG58889 anti-GOLGA1 / Golgin 97 antibody WB image

Western blot: 25 µg of Rat pancreas lysate stained with ARG58889 anti-GOLGA1 / Golgin 97 antibody at 1:1000 dilution.