

ARG58912 anti-ALT / Alanine Transaminase antibody

Package: 50 µg
Store at: -20°C

Summary

Product Description	Goat Polyclonal antibody recognizes ALT / Alanine Transaminase
Tested Reactivity	Hu
Tested Application	WB
Host	Goat
Clonality	Polyclonal
Isotype	IgG
Target Name	ALT / Alanine Transaminase
Species	Human
Immunogen	Synthetic peptide from the internal region of Human ALT / Alanine Transaminase. (NP_005300.1) (KLTQVFNEAPGISC)
Conjugation	Un-conjugated
Alternate Names	Glutamate pyruvate transaminase 1; AAT1; GPT1; GPT 1; Glutamic--alanine transaminase 1; Glutamic--pyruvic transaminase 1; Alanine aminotransferase 1; ALT1; EC 2.6.1.2

Application Instructions

Application table	Application	Dilution
	WB	0.1 - 0.3 µg/ml
Application Note	WB: Recommend incubate at RT for 1h. * The dilutions indicate recommended starting dilutions and the optimal dilutions or concentrations should be determined by the scientist.	
Observed Size	~ 52 kDa	

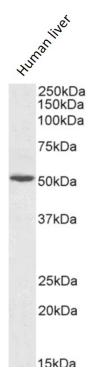
Properties

Form	Liquid
Purification	Affinity purified
Buffer	Tris saline (pH 7.3), 0.02% Sodium azide and 0.5% BSA.
Preservative	0.02% Sodium azide
Stabilizer	0.5% BSA
Concentration	0.5 mg/ml
Storage instruction	For continuous use, store undiluted antibody at 2-8°C for up to a week. For long-term storage, aliquot and store at -20°C or below. Storage in frost free freezers is not recommended. Avoid repeated freeze/thaw cycles. Suggest spin the vial prior to opening. The antibody solution should be gently mixed before use.

Bioinformation

Gene Symbol	GPT
Gene Full Name	glutamic-pyruvate transaminase (alanine aminotransferase)
Background	This gene encodes cytosolic alanine aminotransaminase 1 (ALT1); also known as glutamate-pyruvate transaminase 1. This enzyme catalyzes the reversible transamination between alanine and 2-oxoglutarate to generate pyruvate and glutamate and, therefore, plays a key role in the intermediary metabolism of glucose and amino acids. Serum activity levels of this enzyme are routinely used as a biomarker of liver injury caused by drug toxicity, infection, alcohol, and steatosis. A related gene on chromosome 16 encodes a putative mitochondrial alanine aminotransaminase.[provided by RefSeq, Nov 2009]
Function	Catalyzes the reversible transamination between alanine and 2-oxoglutarate to form pyruvate and glutamate. Participates in cellular nitrogen metabolism and also in liver gluconeogenesis starting with precursors transported from skeletal muscles (By similarity). [UniProt]
Calculated Mw	55 kDa
Cellular Localization	Cytoplasm. [UniProt]

Images



ARG58912 anti-ALT / Alanine Transaminase antibody WB image

Western blot: 35 µg of Human liver lysate (in RIPA buffer) stained with ARG58912 anti-ALT / Alanine Transaminase antibody at 0.1 µg/ml dilution and incubated at RT for 1 hour.