

## ARG58927 anti-GNRH2 / Progonadoliberin 2 antibody

Package: 100 µl  
Store at: -20°C

### Summary

Product Description	Rabbit Polyclonal antibody recognizes GNRH2 / Progonadoliberin 2
Tested Reactivity	Hu
Tested Application	FACS, WB
Host	Rabbit
Clonality	Polyclonal
Isotype	IgG
Target Name	GNRH2 / Progonadoliberin 2
Species	Human
Immunogen	KLH-conjugated synthetic peptide corresponding to aa. 26-53 of Human GNRH2 / Progonadoliberin 2.
Conjugation	Un-conjugated
Alternate Names	Gonadotropin-releasing hormone II; Progonadoliberin II; Gonadoliberin II; Progonadoliberin-2; GnRH II; GnRH-associated peptide II; Luliberin II; GnRH-II; Luteinizing hormone-releasing hormone II; LH-RHII; LH-RH II

### Application Instructions

Application table	Application	Dilution
	FACS	1:10 - 1:50
	WB	1:1000
Application Note	* The dilutions indicate recommended starting dilutions and the optimal dilutions or concentrations should be determined by the scientist.	
Positive Control	MDA-MB-435	

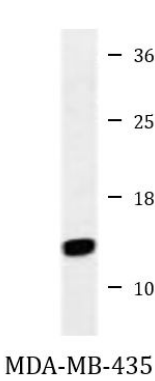
### Properties

Form	Liquid
Purification	Purification with Protein A and immunogen peptide.
Buffer	PBS and 0.09% (W/V) Sodium azide.
Preservative	0.09% (W/V) Sodium azide.
Storage instruction	For continuous use, store undiluted antibody at 2-8°C for up to a week. For long-term storage, aliquot and store at -20°C or below. Storage in frost free freezers is not recommended. Avoid repeated freeze/thaw cycles. Suggest spin the vial prior to opening. The antibody solution should be gently mixed before use.
Note	For laboratory research only, not for drug, diagnostic or other use.

Bioinformation

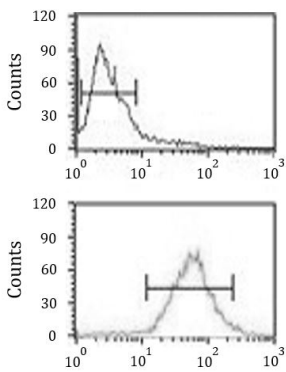
Gene Symbol	GNRH2
Gene Full Name	gonadotropin-releasing hormone 2
Background	This gene encodes a secreted peptide hormone and member of the gonadotropin-releasing hormone (GnRH) family of proteins. The encoded protein regulates reproductive function by stimulating the production and release of the gonadotropins follicle-stimulating hormone (FSH) and luteinizing hormone (LH). The encoded protein may inhibit endometrial, ovarian, prostate, and breast cancer cell proliferation. Alternative splicing results in multiple transcript variants. [provided by RefSeq, Jul 2015]
Function	Stimulates the secretion of gonadotropins; it stimulates the secretion of both luteinizing and follicle-stimulating hormones. [UniProt]
Calculated Mw	13 kDa
Cellular Localization	Secreted. [UniProt]

Images



ARG58927 anti-GNRH2 / Progonadoliberin 2 antibody WB image

Western blot: 35 µg of MDA-MB-435 cell lysate stained with ARG58927 anti-GNRH2 / Progonadoliberin 2 antibody.



ARG58927 anti-GNRH2 / Progonadoliberin 2 antibody FACS image

Flow Cytometry: MDA-MB-435 cells stained with ARG58927 anti-GNRH2 / Progonadoliberin 2 antibody (bottom histogram) or without primary antibody as control (top histogram), followed by incubation with FITC labelled secondary antibody.