

ARG58943 anti-ICA1 / ICA69 antibody

Package: 50 µl
Store at: -20°C

Summary

Product Description	Rabbit Polyclonal antibody recognizes ICA1 / ICA69
Tested Reactivity	Hu
Predict Reactivity	Ms, Rat, Cow, Dog, Gpig, Hrs, Rb, Zfsh
Tested Application	IHC-P
Host	Rabbit
Clonality	Polyclonal
Isotype	IgG
Target Name	ICA1 / ICA69
Species	Human
Immunogen	Synthetic peptide around the N-terminal region of Human ICA1 / ICA69. (within the following region: SKAIVLYQKRICFLSQEENELGKFLRSQGFQDKTRAGKMMQATGKALCFS)
Conjugation	Un-conjugated
Alternate Names	p69; 69 kDa islet cell autoantigen; Islet cell autoantigen 1; ICAp69; ICA69; Islet cell autoantigen p69

Application Instructions

Predict Reactivity Note	Predicted Homology Based On Immunogen Sequence: Cow: 100%; Dog: 100%; Guinea pig: 100%; Horse: 100%; Mouse: 100%; Rabbit: 100%; Rat: 100%; Zebrafish: 86%				
Application table	<table> <tr> <th>Application</th><th>Dilution</th></tr> <tr> <td>IHC-P</td><td>1:100</td></tr> </table>	Application	Dilution	IHC-P	1:100
Application	Dilution				
IHC-P	1:100				
Application Note	* The dilutions indicate recommended starting dilutions and the optimal dilutions or concentrations should be determined by the scientist.				

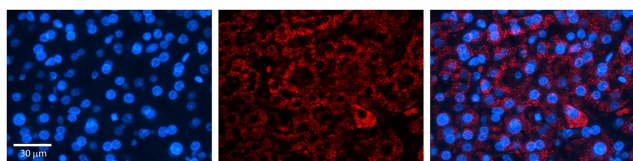
Properties

Form	Liquid
Purification	Affinity purified.
Buffer	PBS, 0.09% (w/v) Sodium azide and 2% Sucrose.
Preservative	0.09% (w/v) Sodium azide
Stabilizer	2% Sucrose
Concentration	Batch dependent: 0.5 - 1 mg/ml
Storage instruction	For continuous use, store undiluted antibody at 2-8°C for up to a week. For long-term storage, aliquot and store at -20°C or below. Storage in frost free freezers is not recommended. Avoid repeated freeze/thaw cycles. Suggest spin the vial prior to opening. The antibody solution should be gently mixed before use.

Bioinformation

Gene Symbol	ICA1
Gene Full Name	islet cell autoantigen 1, 69kDa
Background	This gene encodes a protein with an arfaptin homology domain that is found both in the cytosol and as membrane-bound form on the Golgi complex and immature secretory granules. This protein is believed to be an autoantigen in insulin-dependent diabetes mellitus and primary Sjogren's syndrome. Several transcript variants encoding two different isoforms have been found for this gene. [provided by RefSeq, Feb 2013]
Function	May play a role in neurotransmitter secretion. [UniProt]
Calculated Mw	55 kDa
Cellular Localization	Cytoplasm, cytosol. Golgi apparatus membrane; Peripheral membrane protein. Cytoplasmic vesicle, secretory vesicle membrane; Peripheral membrane protein. Cytoplasmic vesicle, secretory vesicle, synaptic vesicle membrane; Peripheral membrane protein. Note=Predominantly cytosolic. Also exists as a membrane-bound form which has been found associated with synaptic vesicles and also with the Golgi complex and immature secretory granules. [UniProt]

Images



ARG58943 anti-ICA1 / ICA69 antibody IHC-P image

Immunohistochemistry: Formalin-fixed and paraffin-embedded Human liver stained with ARG58943 anti-ICA1 / ICA69 antibody at 1:100 dilution. Magnification: 20X.