

ARG58971 anti-MLF1 antibody

Package: 100 µl
Store at: -20°C

Summary

Product Description	Rabbit Polyclonal antibody recognizes MLF1
Tested Reactivity	Hu, Ms
Tested Application	ICC/IF, WB
Host	Rabbit
Clonality	Polyclonal
Isotype	IgG
Target Name	MLF1
Species	Human
Immunogen	Recombinant fusion protein corresponding to aa. 1-268 of Human MLF1 (NP_071888.1).
Conjugation	Un-conjugated
Alternate Names	Myeloid leukemia factor 1; Myelodysplasia-myeloid leukemia factor 1

Application Instructions

Application table	Application	Dilution
	ICC/IF	1:50 - 1:100
	WB	1:500 - 1:2000
Application Note	* The dilutions indicate recommended starting dilutions and the optimal dilutions or concentrations should be determined by the scientist.	
Positive Control	BT474	
Observed Size	35 kDa	

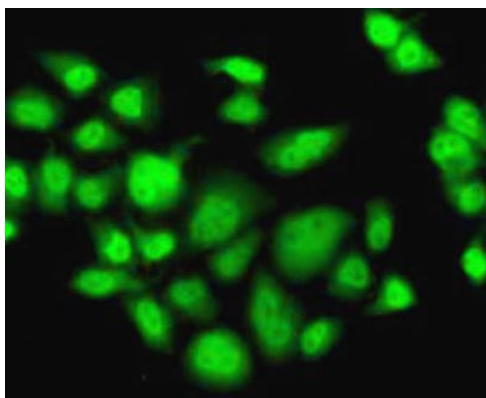
Properties

Form	Liquid
Purification	Affinity purified.
Buffer	PBS (pH 7.3), 0.02% Sodium azide and 50% Glycerol.
Preservative	0.02% Sodium azide
Stabilizer	50% Glycerol
Storage instruction	For continuous use, store undiluted antibody at 2-8°C for up to a week. For long-term storage, aliquot and store at -20°C. Storage in frost free freezers is not recommended. Avoid repeated freeze/thaw cycles. Suggest spin the vial prior to opening. The antibody solution should be gently mixed before use.
Note	For laboratory research only, not for drug, diagnostic or other use.

Bioinformation

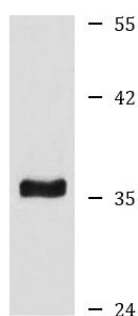
Gene Symbol	MLF1
Gene Full Name	myeloid leukemia factor 1
Background	This gene encodes an oncoprotein which is thought to play a role in the phenotypic determination of hemopoetic cells. Translocations between this gene and nucleophosmin have been associated with myelodysplastic syndrome and acute myeloid leukemia. Multiple transcript variants encoding different isoforms have been found for this gene. [provided by RefSeq, Sep 2010]
Function	Involved in lineage commitment of primary hemopoietic progenitors by restricting erythroid formation and enhancing myeloid formation. Interferes with erythropoietin-induced erythroid terminal differentiation by preventing cells from exiting the cell cycle through suppression of CDKN1B/p27Kip1 levels. Suppresses RFW2/COP1 activity via CSN3 which activates p53 and induces cell cycle arrest. Binds DNA and affects the expression of a number of genes so may function as a transcription factor in the nucleus. [UniProt]
Calculated Mw	31 kDa
PTM	Phosphorylation is required for binding to YWHAZ. [UniProt]
Cellular Localization	Cytoplasm, Nucleus. [UniProt]

Images



ARG58971 anti-MLF1 antibody ICC/IF image

Immunofluorescence: A549 cells stained with ARG58971 anti-MLF1 antibody.



BT474

ARG58971 anti-MLF1 antibody WB image

Western blot: 25 µg of BT474 cell lysate stained with ARG58971 anti-MLF1 antibody at 1:1000 dilution.