

ARG59021 anti-MMP10 antibody

Package: 50 µg
Store at: -20°C

Summary

Product Description	Rabbit Polyclonal antibody recognizes MMP10
Tested Reactivity	Hu, Ms, Rat
Tested Application	ICC/IF, IHC-P, WB
Host	Rabbit
Clonality	Polyclonal
Isotype	IgG
Target Name	MMP10
Species	Human
Immunogen	Recombinant protein corresponding to Y239-C476 of Human MMP10.
Conjugation	Un-conjugated
Alternate Names	SL-2; STMY2; Transin-2; EC 3.4.24.22; Matrix metalloproteinase-10; MMP-10; Stromelysin-2

Application Instructions

Application table	Application	Dilution
	ICC/IF	Assay-dependent
	IHC-P	0.5 - 1 µg/ml
	WB	0.1 - 0.5 µg/ml
Application Note	IHC-P: Antigen Retrieval: Heat mediated was performed in Citrate buffer (pH 6.0, epitope retrieval solution) for 20 min. * The dilutions indicate recommended starting dilutions and the optimal dilutions or concentrations should be determined by the scientist.	

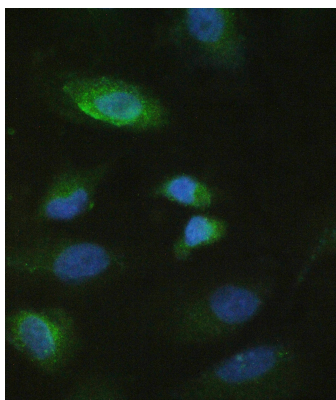
Properties

Form	Liquid
Purification	Affinity purification with immunogen.
Buffer	0.2% Na ₂ HPO ₄ , 0.9% NaCl, 0.05% Sodium azide and 5% BSA.
Preservative	0.05% Sodium azide
Stabilizer	5% BSA
Concentration	0.5 mg/ml
Storage instruction	For continuous use, store undiluted antibody at 2-8°C for up to a week. For long-term storage, aliquot and store at -20°C or below. Storage in frost free freezers is not recommended. Avoid repeated freeze/thaw cycles. Suggest spin the vial prior to opening. The antibody solution should be gently mixed before use.

Bioinformation

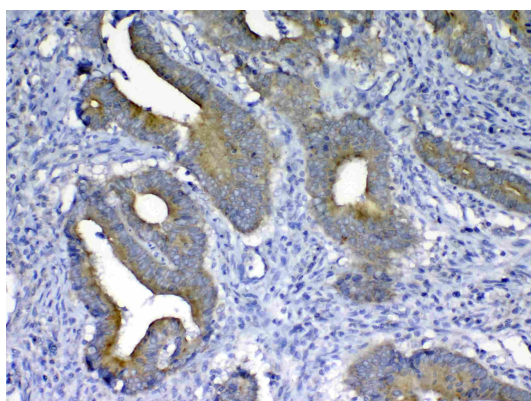
Gene Symbol	MMP10
Gene Full Name	matrix metalloproteinase 10
Background	Proteins of the matrix metalloproteinase (MMP) family are involved in the breakdown of extracellular matrix in normal physiological processes, such as embryonic development, reproduction, and tissue remodeling, as well as in disease processes, such as arthritis and metastasis. Most MMP's are secreted as inactive proproteins which are activated when cleaved by extracellular proteinases. The enzyme encoded by this gene degrades proteoglycans and fibronectin. The gene is part of a cluster of MMP genes which localize to chromosome 11q22.3. [provided by RefSeq, Jul 2008]
Function	Can degrade fibronectin, gelatins of type I, III, IV, and V; weakly collagens III, IV, and V. Activates procollagenase. [UniProt]
Calculated Mw	54 kDa
Cellular Localization	Secreted, extracellular space, extracellular matrix. [UniProt]

Images



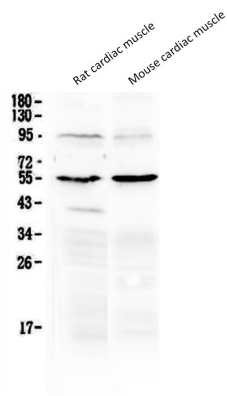
ARG59021 anti-MMP10 antibody ICC/IF image

Immunofluorescence: A549 cells stained with ARG59021 anti-MMP10 antibody.



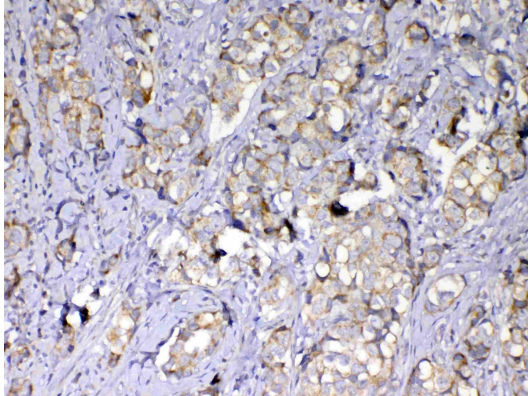
ARG59021 anti-MMP10 antibody IHC-P image

Immunohistochemistry: Paraffin-embedded Human colon cancer tissue. Antigen Retrieval: Heat mediated was performed in Citrate buffer (pH 6.0, epitope retrieval solution) for 20 min. The tissue section was blocked with 10% goat serum. The tissue section was then stained with ARG59021 anti-MMP10 antibody at 1 µg/ml, overnight at 4°C.



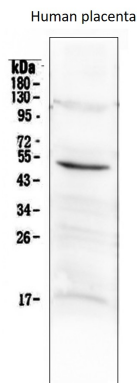
ARG59021 anti-MMP10 antibody WB image

Western blot: 50 µg of samples under reducing conditions. Rat cardiac muscle and Mouse cardiac muscle lysates stained with ARG59021 anti-MMP10 antibody at 0.5 µg/ml, overnight at 4°C.



ARG59021 anti-MMP10 antibody IHC-P image

Immunohistochemistry: Paraffin-embedded Human mammary cancer tissue. Antigen Retrieval: Heat mediated was performed in Citrate buffer (pH 6.0, epitope retrieval solution) for 20 min. The tissue section was blocked with 10% goat serum. The tissue section was then stained with ARG59021 anti-MMP10 antibody at 1 µg/ml, overnight at 4°C.



ARG59021 anti-MMP10 antibody WB image

Western blot: 50 µg of samples under reducing conditions. Human placenta lysate stained with ARG59021 anti-MMP10 antibody at 0.5 µg/ml, overnight at 4°C.