

ARG59024 anti-SIX6 antibody

Package: 50 µg
Store at: -20°C

Summary

Product Description	Rabbit Polyclonal antibody recognizes SIX6
Tested Reactivity	Hu
Tested Application	WB
Host	Rabbit
Clonality	Polyclonal
Isotype	IgG
Target Name	SIX6
Species	Human
Immunogen	Recombinant protein corresponding to A188-I246 of Human SIX6.
Conjugation	Un-conjugated
Alternate Names	Homeobox protein SIX6; ODRMD; OPTX2; Six9; Homeodomain protein OPTX2; Sine oculis homeobox homolog 6; MCOPCT2; Optic homeobox 2

Application Instructions

Application table	Application	Dilution
	WB	0.1 - 0.5 µg/ml
Application Note	* The dilutions indicate recommended starting dilutions and the optimal dilutions or concentrations should be determined by the scientist.	

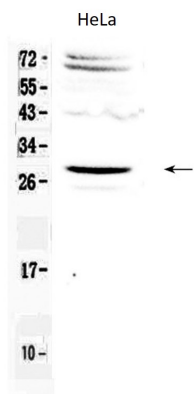
Properties

Form	Liquid
Purification	Affinity purification with immunogen.
Buffer	0.2% Na ₂ HPO ₄ , 0.9% NaCl, 0.05% Sodium azide and 5% BSA.
Preservative	0.05% Sodium azide
Stabilizer	5% BSA
Concentration	0.5 mg/ml
Storage instruction	For continuous use, store undiluted antibody at 2-8°C for up to a week. For long-term storage, aliquot and store at -20°C or below. Storage in frost free freezers is not recommended. Avoid repeated freeze/thaw cycles. Suggest spin the vial prior to opening. The antibody solution should be gently mixed before use.
Note	For laboratory research only, not for drug, diagnostic or other use.

Bioinformation

Gene Symbol	SIX6
Gene Full Name	SIX homeobox 6
Background	The protein encoded by this gene is a homeobox protein that is similar to the Drosophila 'sine oculis' gene product. This gene is found in a cluster of related genes on chromosome 14 and is thought to be involved in eye development. Defects in this gene are a cause of isolated microphthalmia with cataract type 2 (MCOPCT2). [provided by RefSeq, Jul 2008]
Function	May be involved in eye development. [UniProt]
Calculated Mw	28 kDa
Cellular Localization	Nucleus. [UniProt]

Images



ARG59024 anti-SIX6 antibody WB image

Western blot: 50 µg of sample under reducing conditions. HeLa cell lysate stained with ARG59024 anti-SIX6 antibody at 0.5 µg/ml, overnight at 4°C.