

ARG59032 anti-PAI2 / SERPINB2 antibody

Package: 50 µg
Store at: -20°C

Summary

Product Description	Rabbit Polyclonal antibody recognizes PAI2 / SERPINB2
Tested Reactivity	Hu
Tested Application	IHC-P, WB
Host	Rabbit
Clonality	Polyclonal
Isotype	IgG
Target Name	PAI2 / SERPINB2
Species	Human
Immunogen	Recombinant protein corresponding to M1-K180 of Human PAI2 / SERPINB2.
Conjugation	Un-conjugated
Alternate Names	Placental plasminogen activator inhibitor; PLANH2; Urokinase inhibitor; Serpin B2; PAI-2; PAI2; PAI; Plasminogen activator inhibitor 2; HsT1201; Monocyte Arg-serpin

Application Instructions

Application table	Application	Dilution
	IHC-P	0.5 - 1 µg/ml
	WB	0.1 - 0.5 µg/ml
Application Note	IHC-P: Antigen Retrieval: By heat mediation. * The dilutions indicate recommended starting dilutions and the optimal dilutions or concentrations should be determined by the scientist.	

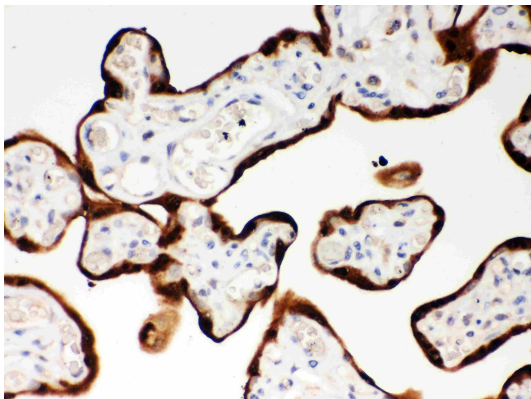
Properties

Form	Liquid
Purification	Affinity purification with immunogen.
Buffer	0.2% Na2HPO4, 0.9% NaCl, 0.05% Sodium azide and 5% BSA.
Preservative	0.05% Sodium azide
Stabilizer	5% BSA
Concentration	0.5 mg/ml
Storage instruction	For continuous use, store undiluted antibody at 2-8°C for up to a week. For long-term storage, aliquot and store at -20°C or below. Storage in frost free freezers is not recommended. Avoid repeated freeze/thaw cycles. Suggest spin the vial prior to opening. The antibody solution should be gently mixed before use.
Note	For laboratory research only, not for drug, diagnostic or other use.

Bioinformation

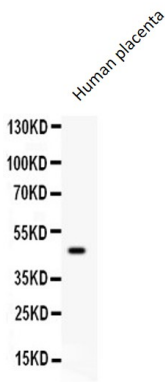
Gene Symbol	SERPINB2
Gene Full Name	serpin peptidase inhibitor, clade B (ovalbumin), member 2
Function	Inhibits urokinase-type plasminogen activator. The monocyte derived PAI-2 is distinct from the endothelial cell-derived PAI-1. [UniProt]
Calculated Mw	47 kDa
PTM	The signal sequence is not cleaved. [UniProt]
Cellular Localization	Cytoplasm. Secreted, extracellular space. [UniProt]

Images



ARG59032 anti-PAI2 / SERPINB2 antibody IHC-P image

Immunohistochemistry: Paraffin-embedded Human placenta tissue stained with ARG59032 anti-PAI2 / SERPINB2 antibody.



ARG59032 anti-PAI2 / SERPINB2 antibody WB image

Western blot: 50 µg of Human placenta lysate stained with ARG59032 anti-PAI2 / SERPINB2 antibody at 0.5 µg/ml dilution.