

ARG59042 anti-RBBP4 / RbAp48 antibody

Package: 50 µg
Store at: -20°C

Summary

Product Description	Rabbit Polyclonal antibody recognizes RBBP4 / RbAp48
Tested Reactivity	Hu, Ms, Rat
Predict Reactivity	Hm
Tested Application	FACS, ICC/IF, IHC-Fr, IHC-P, WB
Host	Rabbit
Clonality	Polyclonal
Isotype	IgG
Target Name	RBBP4 / RbAp48
Species	Human
Immunogen	Synthetic peptide corresponding to aa. 395-425 of Human RbAp48 (EDNIMQVWQMAENIYNDEDPEGSVDPEGQGS).
Conjugation	Un-conjugated
Alternate Names	Retinoblastoma-binding protein 4; Retinoblastoma-binding protein p48; Chromatin assembly factor I p48 subunit; Nucleosome-remodeling factor subunit RBAP48; RBBP-4; NURF55; lin-53; CAF-I p48; CAF-I 48 kDa subunit; Chromatin assembly factor 1 subunit C; CAF-1 subunit C; RBAP48; Histone-binding protein RBBP4

Application Instructions

Application table	Application	Dilution
	FACS	1:150 - 1:500
	ICC/IF	1:200 - 1:1000
	IHC-Fr	1:200 - 1:1000
	IHC-P	0.5 - 1 µg/ml
	WB	0.1 - 0.5 µg/ml
	Application Note	
	IHC-P: Antigen Retrieval: Heat mediation was performed in Citrate buffer (pH 6.0) for 20 min. * The dilutions indicate recommended starting dilutions and the optimal dilutions or concentrations should be determined by the scientist.	
Observed Size	~ 54 kDa	

Properties

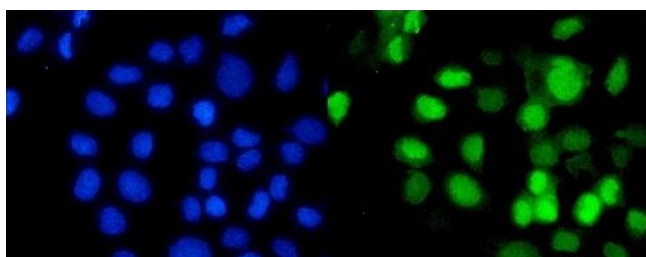
Form	Liquid
Purification	Affinity purification with immunogen.
Buffer	0.2% Na2HPO4, 0.9% NaCl, 0.05% Sodium azide and 5% BSA.

Preservative	0.05% Sodium azide
Stabilizer	5% BSA
Concentration	0.5 mg/ml
Storage instruction	For continuous use, store undiluted antibody at 2-8°C for up to a week. For long-term storage, aliquot and store at -20°C or below. Storage in frost free freezers is not recommended. Avoid repeated freeze/thaw cycles. Suggest spin the vial prior to opening. The antibody solution should be gently mixed before use.
Note	For laboratory research only, not for drug, diagnostic or other use.

Bioinformation

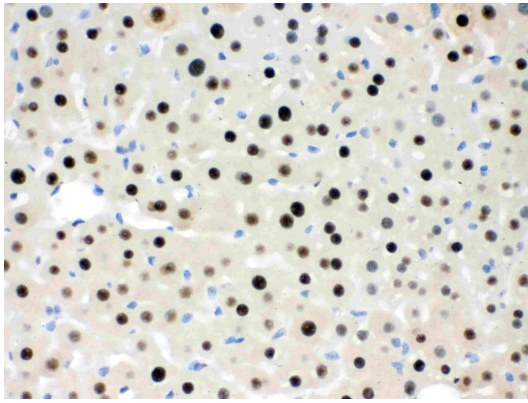
Gene Symbol	RBBP4
Gene Full Name	retinoblastoma binding protein 4
Background	This gene encodes a ubiquitously expressed nuclear protein which belongs to a highly conserved subfamily of WD-repeat proteins. It is present in protein complexes involved in histone acetylation and chromatin assembly. It is part of the Mi-2 complex which has been implicated in chromatin remodeling and transcriptional repression associated with histone deacetylation. This encoded protein is also part of co-repressor complexes, which is an integral component of transcriptional silencing. It is found among several cellular proteins that bind directly to retinoblastoma protein to regulate cell proliferation. This protein also seems to be involved in transcriptional repression of E2F-responsive genes. Three transcript variants encoding different isoforms have been found for this gene. [provided by RefSeq, Sep 2008]
Function	Core histone-binding subunit that may target chromatin assembly factors, chromatin remodeling factors and histone deacetylases to their histone substrates in a manner that is regulated by nucleosomal DNA. Component of several complexes which regulate chromatin metabolism. These include the chromatin assembly factor 1 (CAF-1) complex, which is required for chromatin assembly following DNA replication and DNA repair; the core histone deacetylase (HDAC) complex, which promotes histone deacetylation and consequent transcriptional repression; the nucleosome remodeling and histone deacetylase complex (the NuRD complex), which promotes transcriptional repression by histone deacetylation and nucleosome remodeling; the PRC2/EED-EZH2 complex, which promotes repression of homeotic genes during development; and the NURF (nucleosome remodeling factor) complex. [UniProt]
Calculated Mw	48 kDa
Cellular Localization	Nucleus. [UniProt]

Images



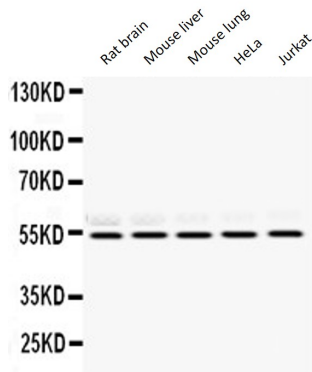
ARG59042 anti-RBBP4 / RbAp48 antibody ICC/IF image

Immunofluorescence: A431 cells were blocked with 10% goat serum and then stained with ARG59042 anti-RBBP4 / RbAp48 antibody (green) at 2 µg/ml dilution, overnight at 4°C. DAPI (blue) for nuclear staining.



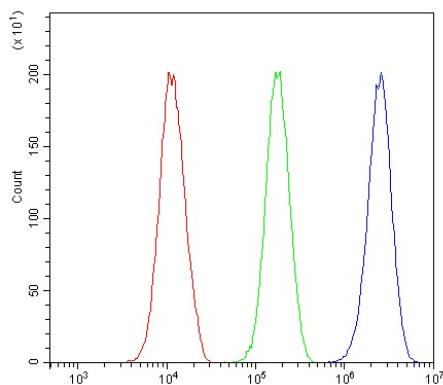
ARG59042 anti-RBBP4 / RbAp48 antibody IHC-P image

Immunohistochemistry: Paraffin-embedded Mouse liver tissue. Antigen Retrieval: Heat mediated was performed in Citrate buffer (pH 6.0, epitope retrieval solution) for 20 min. The tissue section was blocked with 10% goat serum. The tissue section was then stained with ARG59042 anti-RBBP4 / RbAp48 antibody at 1 µg/ml dilution, overnight at 4°C.



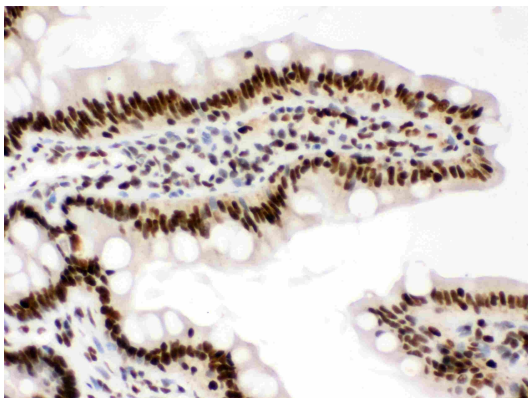
ARG59042 anti-RBBP4 / RbAp48 antibody WB image

Western blot: 50 µg of samples under reducing conditions. Rat brain, Mouse liver, Mouse lung, HeLa and Jurkat lysates stained with ARG59042 anti-RBBP4 / RbAp48 antibody at 0.5 µg/ml, overnight at 4°C.



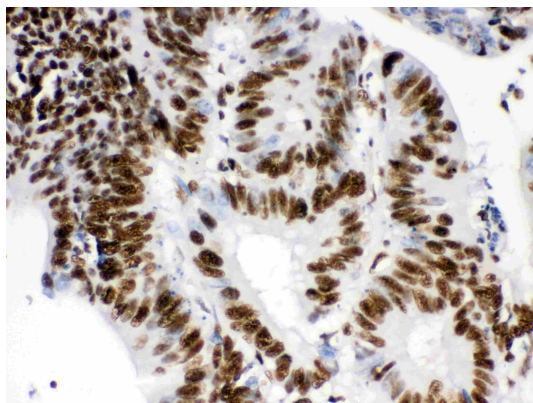
ARG59042 anti-RBBP4 / RbAp48 antibody FACS image

Flow Cytometry: 293T cells were blocked with 10% normal goat serum and then stained with ARG59042 anti-RBBP4 / RbAp48 antibody (blue) at 1 µg/10⁶ cells for 30 min at 20°C, followed by incubation with DyLight®488 labelled secondary antibody. Isotype control antibody (green) was rabbit IgG (1 µg/10⁶ cells) used under the same conditions. Unlabelled sample (red) was also used as a control.



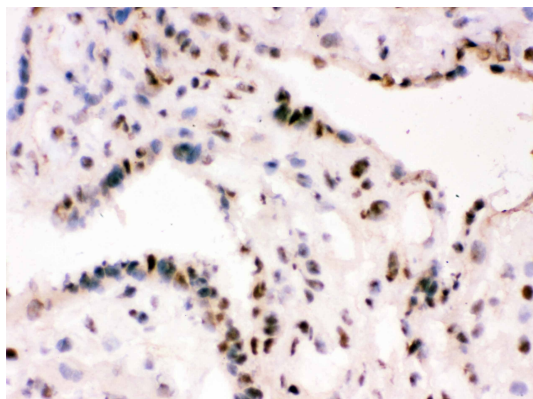
ARG59042 anti-RBBP4 / RbAp48 antibody IHC-P image

Immunohistochemistry: Paraffin-embedded Rat intestine tissue. Antigen Retrieval: Heat mediated was performed in Citrate buffer (pH 6.0, epitope retrieval solution) for 20 min. The tissue section was blocked with 10% goat serum. The tissue section was then stained with ARG59042 anti-RBBP4 / RbAp48 antibody at 1 µg/ml dilution, overnight at 4°C.



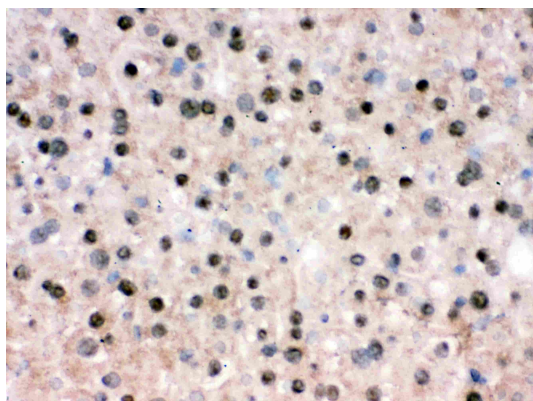
ARG59042 anti-RBBP4 / RbAp48 antibody IHC-P image

Immunohistochemistry: Paraffin-embedded Human intestinal cancer tissue. Antigen Retrieval: Heat mediated was performed in Citrate buffer (pH 6.0, epitope retrieval solution) for 20 min. The tissue section was blocked with 10% goat serum. The tissue section was then stained with ARG59042 anti-RBBP4 / RbAp48 antibody at 1 µg/ml dilution, overnight at 4°C.



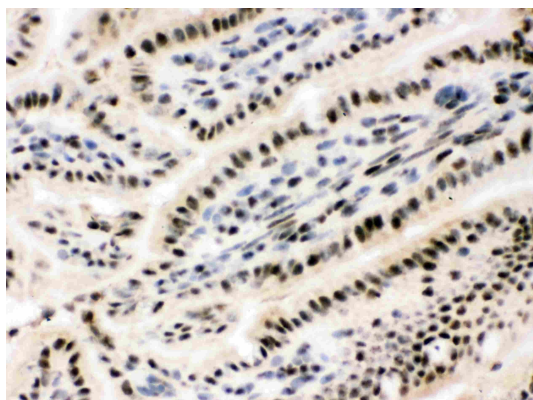
ARG59042 anti-RBBP4 / RbAp48 antibody IHC-Fr image

Immunohistochemistry: Frozen section of Human placenta tissue. The tissue section was blocked with 10% goat serum. The tissue section was then stained with ARG59042 anti-RBBP4 / RbAp48 antibody at 1 µg/ml dilution, overnight at 4°C.



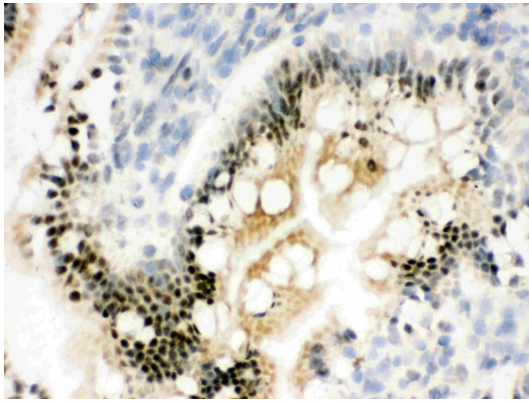
ARG59042 anti-RBBP4 / RbAp48 antibody IHC-Fr image

Immunohistochemistry: Frozen section of Mouse liver tissue. The tissue section was blocked with 10% goat serum. The tissue section was then stained with ARG59042 anti-RBBP4 / RbAp48 antibody at 1 µg/ml dilution, overnight at 4°C.



ARG59042 anti-RBBP4 / RbAp48 antibody IHC-Fr image

Immunohistochemistry: Frozen section of Mouse small intestine tissue. The tissue section was blocked with 10% goat serum. The tissue section was then stained with ARG59042 anti-RBBP4 / RbAp48 antibody at 1 µg/ml dilution, overnight at 4°C.



ARG59042 anti-RBBP4 / RbAp48 antibody IHC-Fr image

Immunohistochemistry: Frozen section of Rat small intestine tissue. The tissue section was blocked with 10% goat serum. The tissue section was then stained with ARG59042 anti-RBBP4 / RbAp48 antibody at 1 µg/ml dilution, overnight at 4°C.