

ARG59047 anti-NUCB2 (Nesfatin 1) antibody

Package: 50 µg
Store at: -20°C

Summary

Product Description	Rabbit Polyclonal antibody recognizes NUCB2 (Nesfatin 1)
Tested Reactivity	Ms, Rat
Tested Application	IHC-P, WB
Host	Rabbit
Clonality	Polyclonal
Isotype	IgG
Target Name	NUCB2 (Nesfatin 1)
Species	Mouse
Immunogen	Recombinant protein corresponding to V25-L106 of Mouse NUCB2.
Conjugation	Un-conjugated
Alternate Names	HEL-S-109; NEFA; Nucleobindin-2; Gastric cancer antigen Zg4; Prepronesfatin; DNA-binding protein NEFA

Application Instructions

Application table	Application	Dilution
	IHC-P	0.5 - 1 µg/ml
	WB	0.1 - 0.5 µg/ml
Application Note	IHC-P: Antigen Retrieval: By heat mediation. * The dilutions indicate recommended starting dilutions and the optimal dilutions or concentrations should be determined by the scientist.	

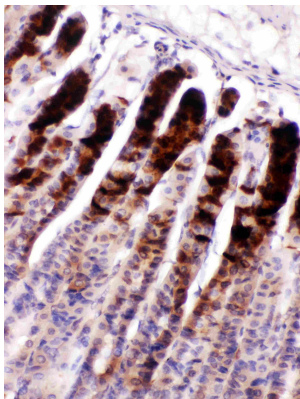
Properties

Form	Liquid
Purification	Affinity purification with immunogen.
Buffer	0.2% Na ₂ HPO ₄ , 0.9% NaCl, 0.05% Sodium azide and 5% BSA.
Preservative	0.05% Sodium azide
Stabilizer	5% BSA
Concentration	0.5 mg/ml
Storage instruction	For continuous use, store undiluted antibody at 2-8°C for up to a week. For long-term storage, aliquot and store at -20°C or below. Storage in frost free freezers is not recommended. Avoid repeated freeze/thaw cycles. Suggest spin the vial prior to opening. The antibody solution should be gently mixed before use.
Note	For laboratory research only, not for drug, diagnostic or other use.

Bioinformation

Gene Symbol	NUCB2
Gene Full Name	nucleobindin 2
Background	This gene encodes a protein with a suggested role in calcium level maintenance, eating regulation in the hypothalamus, and release of tumor necrosis factor from vascular endothelial cells. This protein binds calcium and has EF-folding domains. [provided by RefSeq, Oct 2011]
Function	Calcium-binding protein. May have a role in calcium homeostasis. Nesfatin-1: Anorexigenic peptide, seems to play an important role in hypothalamic pathways regulating food intake and energy homeostasis, acting in a leptin-independent manner. May also exert hypertensive roles and modulate blood pressure through directly acting on peripheral arterial resistance (By similarity). [UniProt]
Calculated Mw	50 kDa
Cellular Localization	Cytoplasm. Perikaryon. Endoplasmic reticulum. Golgi apparatus. Nucleus envelope. Membrane; Peripheral membrane protein. Secreted. In dendrites and perikarya of brain neurons. Abundant in the ER cisternae and nuclear envelope, but not detected in Golgi, mitochondria or nucleoplasm in neurons. In cell culture, cytoplasmic and secreted. [UniProt]

Images



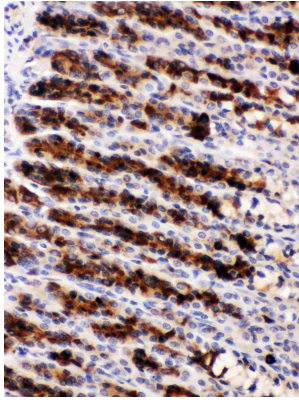
ARG59047 anti-NUCB2 (Nesfatin 1) antibody IHC-P image

Immunohistochemistry: Paraffin-embedded Mouse gaster tissue stained with ARG59047 anti-NUCB2 (Nesfatin 1) antibody at 1 µg/ml dilution.



ARG59047 anti-NUCB2 (Nesfatin 1) antibody WB image

Western blot: HEPA cell lysate stained with ARG59047 anti-NUCB2 (Nesfatin 1) antibody at 0.5 µg/ml dilution.



ARG59047 anti-NUCB2 (Nesfatin 1) antibody IHC-P image

Immunohistochemistry: Paraffin-embedded Rat gaster tissue stained with ARG59047 anti-NUCB2 (Nesfatin 1) antibody at 1 µg/ml dilution.