

ARG59048 anti-Elafin antibody

Package: 50 µg
Store at: -20°C

Summary

Product Description	Rabbit Polyclonal antibody recognizes Elafin
Tested Reactivity	Hu
Tested Application	IHC-P
Host	Rabbit
Clonality	Polyclonal
Isotype	IgG
Target Name	Elafin
Species	Human
Immunogen	Recombinant protein corresponding to A61-Q117 of Human Elafin.
Conjugation	Un-conjugated
Alternate Names	Protease inhibitor WAP3; cementoin; WFDC14; Skin-derived antileukoproteinase; WAP four-disulfide core domain protein 14; SKALP; Elafin; Elastase-specific inhibitor; WAP3; Peptidase inhibitor 3; ESI; PI-3

Application Instructions

Application table	Application	Dilution
	IHC-P	0.5 - 1 µg/ml
Application Note	IHC-P: Antigen Retrieval: By heat mediation. * The dilutions indicate recommended starting dilutions and the optimal dilutions or concentrations should be determined by the scientist.	

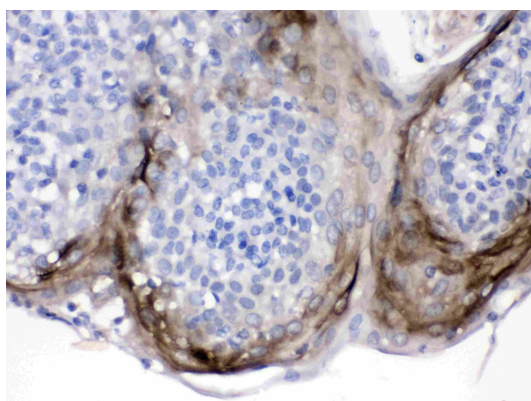
Properties

Form	Liquid
Purification	Affinity purification with immunogen.
Buffer	0.2% Na ₂ HPO ₄ , 0.9% NaCl, 0.05% Sodium azide and 5% BSA.
Preservative	0.05% Sodium azide
Stabilizer	5% BSA
Concentration	0.5 mg/ml
Storage instruction	For continuous use, store undiluted antibody at 2-8°C for up to a week. For long-term storage, aliquot and store at -20°C or below. Storage in frost free freezers is not recommended. Avoid repeated freeze/thaw cycles. Suggest spin the vial prior to opening. The antibody solution should be gently mixed before use.
Note	For laboratory research only, not for drug, diagnostic or other use.

Bioinformation

Gene Symbol	PI3
Gene Full Name	peptidase inhibitor 3, skin-derived
Background	This gene encodes an elastase-specific inhibitor that functions as an antimicrobial peptide against Gram-positive and Gram-negative bacteria, and fungal pathogens. The protein contains a WAP-type four-disulfide core (WFDC) domain, and is thus a member of the WFDC domain family. Most WFDC gene members are localized to chromosome 20q12-q13 in two clusters: centromeric and telomeric. This gene belongs to the centromeric cluster. Expression of this gene is upregulated by bacterial lipopolysaccharides and cytokines. [provided by RefSeq, Oct 2014]
Function	Neutrophil and pancreatic elastase-specific inhibitor of skin. It may prevent elastase-mediated tissue proteolysis. [UniProt]
Calculated Mw	12 kDa
Cellular Localization	Secreted. [UniProt]

Images



ARG59048 anti-Elafin antibody IHC-P image

Immunohistochemistry: Paraffin-embedded Human tonsil tissue stained with ARG59048 anti-Elafin antibody at 1 µg/ml dilution.