

## ARG59058 anti-RALBP1 antibody

Package: 100 µl  
Store at: -20°C

### Summary

Product Description	Rabbit Polyclonal antibody recognizes RALBP1
Tested Reactivity	Hu
Predict Reactivity	Ms, Rat
Tested Application	IHC-P, WB
Host	Rabbit
Clonality	Polyclonal
Isotype	IgG
Target Name	RALBP1
Species	Human
Immunogen	Synthetic peptide derived from Human RALBP1.
Conjugation	Un-conjugated
Alternate Names	RaIA-binding protein 1; RalBP1; Dinitrophenyl S-glutathione ATPase; DNP-SG ATPase; RIP1; RLIP76; Ral-interacting protein 1; 76 kDa Ral-interacting protein; RLIP1

### Application Instructions

Application table	Application	Dilution
	IHC-P	1:50 - 1:200
	WB	1:5000 - 1:10000
Application Note	* The dilutions indicate recommended starting dilutions and the optimal dilutions or concentrations should be determined by the scientist.	
Observed Size	95kDa	

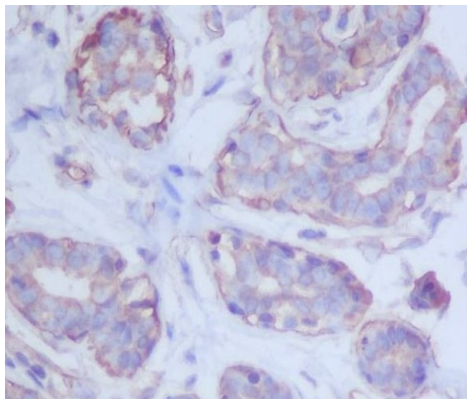
### Properties

Form	Liquid
Purification	Affinity purified.
Buffer	PBS (pH 7.4), 0.02% Sodium azide and 50% Glycerol.
Preservative	0.02% Sodium azide
Stabilizer	50% Glycerol
Storage instruction	For continuous use, store undiluted antibody at 2-8°C for up to a week. For long-term storage, aliquot and store at -20°C. Storage in frost free freezers is not recommended. Avoid repeated freeze/thaw cycles. Suggest spin the vial prior to opening. The antibody solution should be gently mixed before use.
Note	For laboratory research only, not for drug, diagnostic or other use.

Bioinformation

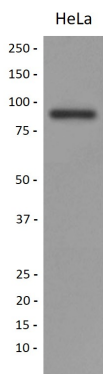
Gene Symbol	RALBP1
Gene Full Name	ralA binding protein 1
Background	RALBP1 plays a role in receptor-mediated endocytosis and is a downstream effector of the small GTP-binding protein RAL (see RALA; MIM 179550). Small G proteins, such as RAL, have GDP-bound inactive and GTP-bound active forms, which shift from the inactive to the active state through the action of RALGDS (MIM 601619), which in turn is activated by RAS (see HRAS; MIM 190020) (summary by Feig, 2003 [PubMed 12888294]).[supplied by OMIM, Nov 2010]
Function	Can activate specifically hydrolysis of GTP bound to RAC1 and CDC42, but not RALA. Mediates ATP-dependent transport of S-(2,4-dinitrophenyl)-glutathione (DNP-SG) and doxorubicin (DOX) and is the major ATP-dependent transporter of glutathione conjugates of electrophiles (GS-E) and DOX in erythrocytes. Can catalyze transport of glutathione conjugates and xenobiotics, and may contribute to the multidrug resistance phenomenon. Serves as a scaffold protein that brings together proteins forming an endocytotic complex during interphase and also with CDK1 to switch off endocytosis, One of its substrates would be EPN1/Epsin. [UniProt]
Calculated Mw	76 kDa
Cellular Localization	Membrane; Peripheral membrane protein. [UniProt]

Images



ARG59058 anti-RALBP1 antibody IHC-P image

Immunohistochemistry: Paraffin-embedded Human breast stained with ARG59058 anti-RALBP1 antibody.



ARG59058 anti-RALBP1 antibody WB image

Western blot: HeLa cell lysate stained with ARG59058 anti-RALBP1 antibody.