

## ARG59059 anti-NEDD8 antibody

Package: 100 µl  
Store at: -20°C

### Summary

Product Description	Rabbit Polyclonal antibody recognizes NEDD8
Tested Reactivity	Hu, Ms, Rat
Tested Application	ICC/IF, IHC-P, IP, WB
Host	Rabbit
Clonality	Polyclonal
Isotype	IgG
Target Name	NEDD8
Species	Human
Immunogen	Synthetic peptide derived from Human NEDD8.
Conjugation	Un-conjugated
Alternate Names	NEDD8; Ubiquitin-like protein Nedd8; Neddylin; NEDD-8; Neural precursor cell expressed developmentally down-regulated protein 8

### Application Instructions

Application table	Application	Dilution
	ICC/IF	1:50 - 1:200
	IHC-P	1:50 - 1:200
	IP	1:20
	WB	1:500 - 1:2000
Application Note	* The dilutions indicate recommended starting dilutions and the optimal dilutions or concentrations should be determined by the scientist.	
Positive Control	K562	
Observed Size	10 kDa, 88 kDa	

### Properties

Form	Liquid
Purification	Affinity purified.
Buffer	PBS (pH 7.4), 0.02% Sodium azide and 50% Glycerol.
Preservative	0.02% Sodium azide
Stabilizer	50% Glycerol
Storage instruction	For continuous use, store undiluted antibody at 2-8°C for up to a week. For long-term storage, aliquot and store at -20°C. Storage in frost free freezers is not recommended. Avoid repeated freeze/thaw

cycles. Suggest spin the vial prior to opening. The antibody solution should be gently mixed before use.

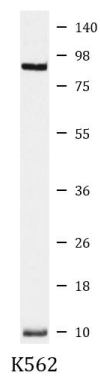
#### Note

For laboratory research only, not for drug, diagnostic or other use.

## Bioinformation

Gene Symbol	NEDD8
Gene Full Name	neural precursor cell expressed, developmentally down-regulated 8
Function	Ubiquitin-like protein which plays an important role in cell cycle control and embryogenesis. Covalent attachment to its substrates requires prior activation by the E1 complex UBE1C-APPBP1 and linkage to the E2 enzyme UBE2M. Attachment of NEDD8 to cullins activates their associated E3 ubiquitin ligase activity, and thus promotes polyubiquitination and proteasomal degradation of cyclins and other regulatory proteins. [UniProt]
Calculated Mw	9 kDa
PTM	Cleavage of precursor form by UCHL3 or SENP8 is necessary for function. [UniProt]
Cellular Localization	Nucleus. Note=Mainly nuclear. [UniProt]

## Images



ARG59059 anti-NEDD8 antibody WB image

Western blot: K562 cell lysate stained with ARG59059 anti-NEDD8 antibody.