

ARG59071 anti-ATG14 / ATG14L antibody

Package: 50 µg
Store at: -20°C

Summary

Product Description	Rabbit Polyclonal antibody recognizes ATG14 / ATG14L
Tested Reactivity	Hu, Rat
Predict Reactivity	Hm
Tested Application	FACS, ICC/IF, IHC-P, WB
Host	Rabbit
Clonality	Polyclonal
Isotype	IgG
Target Name	ATG14 / ATG14L
Species	Human
Immunogen	Synthetic peptide corresponding to aa. 70-101 of Human ATG14 / ATG14L (RDRERFIDKKERLSRLKSKQEEFQKEVLKAME).
Conjugation	Un-conjugated
Alternate Names	BARKOR; Autophagy-related protein 14-like protein; Beclin 1-associated autophagy-related key regulator; Barkor; KIAA0831; Atg14L; ATG14L

Application Instructions

Application table	Application	Dilution
	FACS	1 - 3 µg/10 ⁶ cells
	ICC/IF	5 µg/ml
	IHC-P	0.5 - 1 µg/ml
	WB	0.1 - 0.5 µg/ml
Application Note	IHC-P: Antigen Retrieval: Heat mediated was performed in Citrate buffer (pH 6.0) for 20 min. * The dilutions indicate recommended starting dilutions and the optimal dilutions or concentrations should be determined by the scientist.	
Observed Size	~ 57 kDa	

Properties

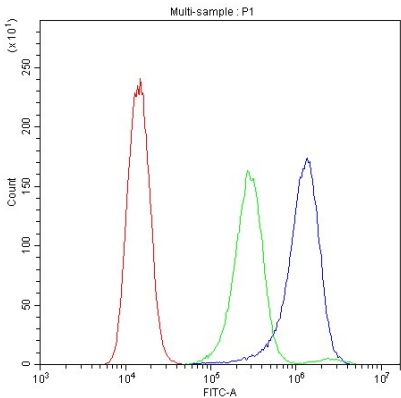
Form	Liquid
Purification	Affinity purification with immunogen.
Buffer	0.2% Na ₂ HPO ₄ , 0.9% NaCl, 0.05% Sodium azide and 5% BSA.
Preservative	0.05% Sodium azide
Stabilizer	5% BSA

Concentration	0.5 mg/ml
Storage instruction	For continuous use, store undiluted antibody at 2-8°C for up to a week. For long-term storage, aliquot and store at -20°C or below. Storage in frost free freezers is not recommended. Avoid repeated freeze/thaw cycles. Suggest spin the vial prior to opening. The antibody solution should be gently mixed before use.
Note	For laboratory research only, not for drug, diagnostic or other use.

Bioinformation

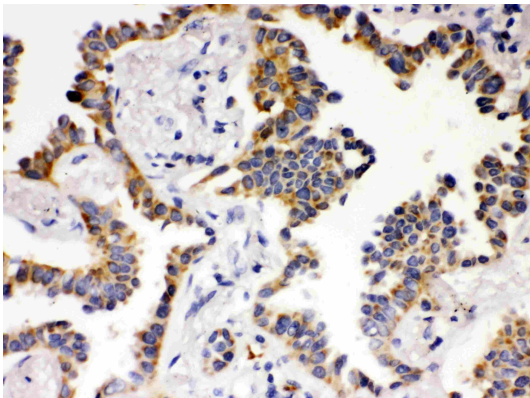
Gene Symbol	ATG14
Gene Full Name	autophagy related 14
Function	Required for both basal and inducible autophagy. Determines the localization of the autophagy-specific PI3-kinase complex PI3KC3-C1. Plays a role in autophagosome formation and MAP1LC3/LC3 conjugation to phosphatidylethanolamine. Promotes BECN1 translocation from the trans-Golgi network to autophagosomes. Enhances PIK3C3 activity in a BECN1-dependent manner. Essential for the autophagy-dependent phosphorylation of BECN1. Stimulates the phosphorylation of BECN1, but suppresses the phosphorylation PIK3C3 by AMPK. Binds to STX17-SNAP29 binary t-SNARE complex on autophagosomes and primes it for VAMP8 interaction to promote autophagosome-endolysosome fusion. Modulates the hepatic lipid metabolism (By similarity). [UniProt]
Calculated Mw	55 kDa
Cellular Localization	Cytoplasm. Endoplasmic reticulum membrane; Peripheral membrane protein. Preautophagosomal structure membrane; Peripheral membrane protein. Cytoplasmic vesicle, autophagosome membrane; Peripheral membrane protein. [UniProt]

Images



ARG59071 anti-ATG14 / ATG14L antibody FACS image

Flow Cytometry: A431 cells were blocked with 10% normal goat serum and then stained with ARG59071 anti-ATG14 / ATG14L antibody (blue) at 1 µg/10⁶ cells for 30 min at 20°C, followed by DyLight®488 labelled secondary antibody. Isotype control antibody (green) was rabbit IgG (1 µg/10⁶ cells) used under the same conditions. Unlabelled sample (red) was also used as a control.



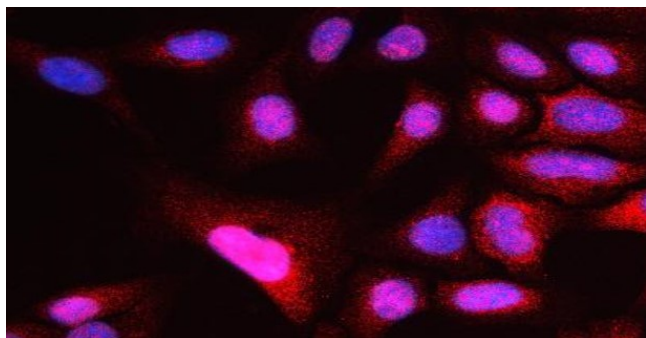
ARG59071 anti-ATG14 / ATG14L antibody IHC-P image

Immunohistochemistry: Paraffin-embedded Human lung cancer tissue. Antigen Retrieval: Heat mediated was performed in Citrate buffer (pH 6.0, epitope retrieval solution) for 20 min. The tissue section was blocked with 10% goat serum. The tissue section was then stained with ARG59071 anti-ATG14 / ATG14L antibody at 1 µg/ml, overnight at 4°C.



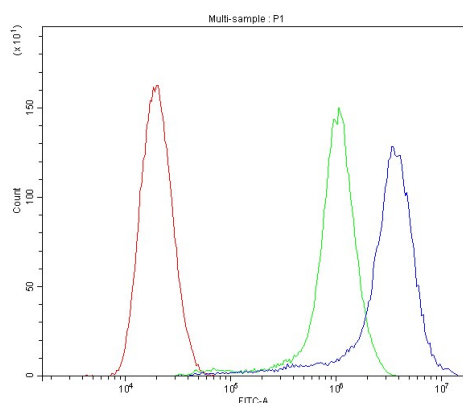
ARG59071 anti-ATG14 / ATG14L antibody WB image

Western blot: 50 µg of samples under reducing conditions. Rat brain and HeLa whole cell lysates stained with ARG59071 anti-ATG14 / ATG14L antibody at 0.5 µg/ml, overnight at 4°C.



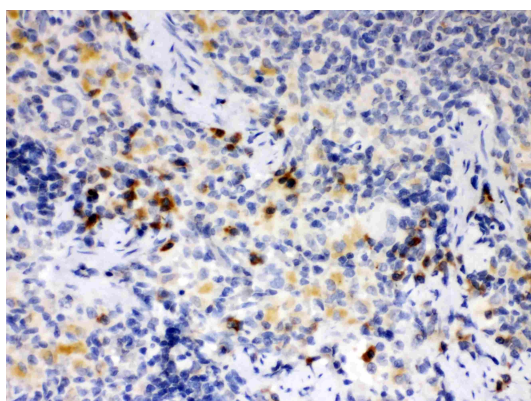
ARG59071 anti-ATG14 / ATG14L antibody ICC/IF image

Immunofluorescence: U2OS cells stained with ARG59071 anti-ATG14 / ATG14L antibody at 5 µg/mL.



ARG59071 anti-ATG14 / ATG14L antibody FACS image

Flow Cytometry: SiHa cells were blocked with 10% normal goat serum and then stained with ARG59071 anti-ATG14 / ATG14L antibody (blue) at 1 µg/10⁶ cells for 30 min at 20°C, followed by DyLight®488 labelled secondary antibody. Isotype control antibody (green) was Rabbit IgG (1 µg/10⁶ cells) used under the same conditions. Unlabelled sample (red) was also used as a control.



ARG59071 anti-ATG14 / ATG14L antibody IHC-P image

Immunohistochemistry: Paraffin-embedded Rat spleen tissue. Antigen Retrieval: Heat mediated was performed in Citrate buffer (pH 6.0, epitope retrieval solution) for 20 min. The tissue section was blocked with 10% goat serum. The tissue section was then stained with ARG59071 anti-ATG14 / ATG14L antibody at 1 µg/ml, overnight at 4°C.