

ARG59100 anti-Natriuretic peptides A antibody

Package: 50 µg
Store at: -20°C

Summary

Product Description	Rabbit Polyclonal antibody recognizes Natriuretic peptides A
Tested Reactivity	Ms, Rat
Tested Application	IHC-P, WB
Host	Rabbit
Clonality	Polyclonal
Isotype	IgG
Target Name	Natriuretic peptides A
Species	Rat
Immunogen	Recombinant protein corresponding to N25-R122 of Rat Natriuretic peptides A.
Conjugation	Un-conjugated
Alternate Names	CDD; Natriuretic peptides A; ANF; Cardiodilatin; Cardiodilatin-related peptide; Atrial natriuretic peptide; Prepronatriodilatin; ATFB6; CDP; ATRST2; ANP; CDD-ANF; PND

Application Instructions

Application table	Application	Dilution
	IHC-P	0.5 - 1 µg/ml
	WB	0.1 - 0.5 µg/ml
Application Note	IHC-P: Antigen Retrieval: Heat mediated was performed in Citrate buffer (pH 6.0) for 20 min. * The dilutions indicate recommended starting dilutions and the optimal dilutions or concentrations should be determined by the scientist.	

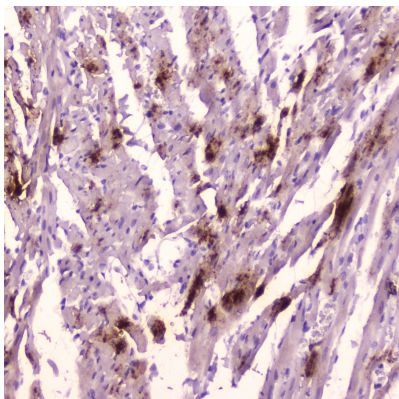
Properties

Form	Liquid
Purification	Affinity purified.
Buffer	0.9% NaCl, 0.2% Na ₂ HPO ₄ , 0.05% Sodium azide and 4% Trehalose.
Preservative	0.05% Sodium azide
Stabilizer	4% Trehalose
Concentration	0.5 mg/ml
Storage instruction	For continuous use, store undiluted antibody at 2-8°C for up to a week. For long-term storage, aliquot and store at -20°C or below. Storage in frost free freezers is not recommended. Avoid repeated freeze/thaw cycles. Suggest spin the vial prior to opening. The antibody solution should be gently mixed before use.
Note	For laboratory research only, not for drug, diagnostic or other use.

Bioinformation

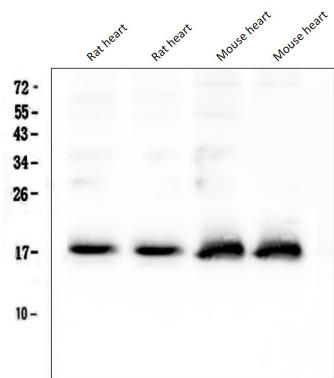
Gene Symbol	NPPA
Gene Full Name	natriuretic peptide A
Background	The protein encoded by this gene belongs to the natriuretic peptide family. Natriuretic peptides are implicated in the control of extracellular fluid volume and electrolyte homeostasis. This protein is synthesized as a large precursor (containing a signal peptide), which is processed to release a peptide from the N-terminus with similarity to vasoactive peptide, cardiodilatin, and another peptide from the C-terminus with natriuretic-diuretic activity. Mutations in this gene have been associated with atrial fibrillation familial type 6. [provided by RefSeq, Sep 2009]
Function	Hormone playing a key role in cardiovascular homeostasis through regulation of natriuresis, diuresis, and vasodilation. Also plays a role in female pregnancy by promoting trophoblast invasion and spiral artery remodeling in uterus. Specifically binds and stimulates the cGMP production of the NPR1 receptor. Binds the clearance receptor NPR3. [UniProt]
Calculated Mw	16 kDa
PTM	Cleaved by CORIN upon secretion to produce the functional hormone. Atrial natriuretic factor: Cleaved by MME. The cleavage initiates degradation of the factor and thereby regulate its activity. [UniProt]

Images



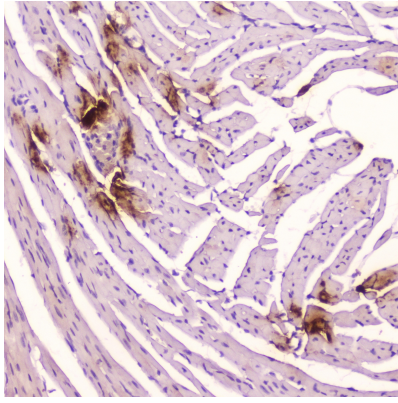
ARG59100 anti-Natriuretic peptides A antibody IHC-P image

Immunohistochemistry: Paraffin-embedded Rat cardiac muscle tissue. Antigen Retrieval: Heat mediated was performed in Citrate buffer (pH 6.0, epitope retrieval solution) for 20 min. The tissue section was blocked with 10% goat serum. The tissue section was then stained with ARG59100 anti-Natriuretic peptides A antibody at 2 µg/ml, overnight at 4°C.



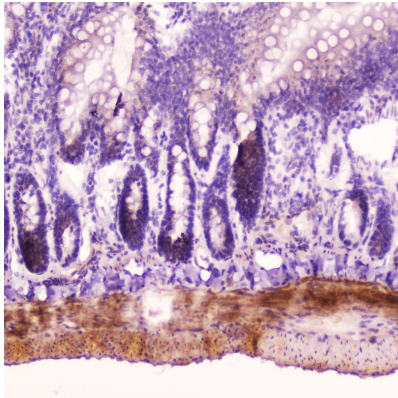
ARG59100 anti-Natriuretic peptides A antibody WB image

Western blot: 50 µg of samples under reducing conditions. Rat heart (Lane 1, 2) and Mouse heart (Lane 3, 4) lysates stained with ARG59100 anti-Natriuretic peptides A antibody at 0.5 µg/ml, overnight at 4°C.



ARG59100 anti-Natriuretic peptides A antibody IHC-P image

Immunohistochemistry: Paraffin-embedded Mouse cardiac muscle tissue. Antigen Retrieval: Heat mediated was performed in Citrate buffer (pH 6.0, epitope retrieval solution) for 20 min. The tissue section was blocked with 10% goat serum. The tissue section was then stained with ARG59100 anti-Natriuretic peptides A antibody at 2 µg/ml, overnight at 4°C.



ARG59100 anti-Natriuretic peptides A antibody IHC-P image

Immunohistochemistry: Paraffin-embedded Rat small intestine tissue. Antigen Retrieval: Heat mediated was performed in Citrate buffer (pH 6.0, epitope retrieval solution) for 20 min. The tissue section was blocked with 10% goat serum. The tissue section was then stained with ARG59100 anti-Natriuretic peptides A antibody at 2 µg/ml, overnight at 4°C.