

## ARG59108 anti-RNASE1 / Ribonuclease A antibody

Package: 50 µg  
Store at: -20°C

### Summary

Product Description	Rabbit Polyclonal antibody recognizes RNASE1 / Ribonuclease A
Tested Reactivity	Hu
Tested Application	WB
Host	Rabbit
Clonality	Polyclonal
Isotype	IgG
Target Name	RNASE1 / Ribonuclease A
Species	Human
Immunogen	Synthetic peptide corresponding to aa. 72-90 of Human RNASE1 / Ribonuclease A. (NTFVHEPLVDVQNVCFQEK)
Conjugation	Un-conjugated
Alternate Names	Ribonuclease A; RNase A; RNS1; RAC1; RIB1; EC 3.1.27.5; Ribonuclease 1; RNase 1; Ribonuclease pancreatic; RNase Up1-1; RIB-1; HP-RNase

### Application Instructions

Application table	Application	Dilution
	WB	0.1 - 0.5 µg/ml
Application Note	* The dilutions indicate recommended starting dilutions and the optimal dilutions or concentrations should be determined by the scientist.	

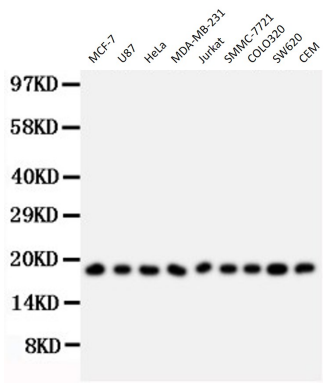
### Properties

Form	Liquid
Purification	Affinity purification with immunogen.
Buffer	0.9% NaCl, 0.2% Na <sub>2</sub> HPO <sub>4</sub> , 0.05% Thimerosal, 0.05% Sodium azide and 5% BSA.
Preservative	0.05% Thimerosal and 0.05% Sodium azide
Stabilizer	5% BSA
Concentration	0.5 mg/ml
Storage instruction	For continuous use, store undiluted antibody at 2-8°C for up to a week. For long-term storage, aliquot and store at -20°C or below. Storage in frost free freezers is not recommended. Avoid repeated freeze/thaw cycles. Suggest spin the vial prior to opening. The antibody solution should be gently mixed before use.
Note	For laboratory research only, not for drug, diagnostic or other use.

Bioinformation

Gene Symbol	RNASE1
Gene Full Name	ribonuclease, RNase A family, 1 (pancreatic)
Background	This gene encodes a member of the pancreatic-type of secretory ribonucleases, a subset of the ribonuclease A superfamily. The encoded endonuclease cleaves internal phosphodiester RNA bonds on the 3'-side of pyrimidine bases. It prefers poly(C) as a substrate and hydrolyzes 2',3'-cyclic nucleotides, with a pH optimum near 8.0. The encoded protein is monomeric and more commonly acts to degrade ds-RNA over ss-RNA. Alternative splicing occurs at this locus and four transcript variants encoding the same protein have been identified. [provided by RefSeq, Jul 2008]
Function	Endonuclease that catalyzes the cleavage of RNA on the 3' side of pyrimidine nucleotides. Acts on single-stranded and double-stranded RNA. [UniProt]
Calculated Mw	18 kDa
PTM	N-linked glycans are of complex type. [UniProt]
Cellular Localization	Secreted. [UniProt]

Images



ARG59108 anti-RNASE1 / Ribonuclease A antibody WB image

Western blot: 40 µg of MCF-7, U87, HeLa, MDA-MB-231, Jurkat, SMMC-7721, COLO320, SW620 and CEM cell lysates stained with ARG59108 anti-RNASE1 / Ribonuclease A antibody at 0.5 µg/ml dilution.