

ARG59112 anti-VAMP7 / SYBL1 antibody

Package: 50 µg
Store at: -20°C

Summary

Product Description	Rabbit Polyclonal antibody recognizes VAMP7 / SYBL1
Tested Reactivity	Hu, Rat
Predict Reactivity	Bov, Hrs, Mk, Rb
Tested Application	WB
Host	Rabbit
Clonality	Polyclonal
Isotype	IgG
Target Name	VAMP7 / SYBL1
Species	Human
Immunogen	Recombinant protein corresponding to N24-T190 of Human VAMP7 / SYBL1.
Conjugation	Un-conjugated
Alternate Names	Vesicle-associated membrane protein 7; Tetanus-insensitive VAMP; SYBL1; Ti-VAMP; Synaptobrevin-like protein 1; VAMP-7; TI-VAMP; TIVAMP

Application Instructions

Application table	Application	Dilution
	WB	0.1 - 0.5 µg/ml
Application Note	* The dilutions indicate recommended starting dilutions and the optimal dilutions or concentrations should be determined by the scientist.	

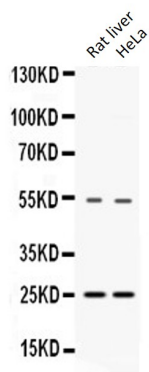
Properties

Form	Liquid
Purification	Affinity purification with immunogen.
Buffer	0.9% NaCl, 0.2% Na2HPO4, 0.05% Sodium azide and 5% BSA.
Preservative	0.05% Sodium azide
Stabilizer	5% BSA
Concentration	0.5 mg/ml
Storage instruction	For continuous use, store undiluted antibody at 2-8°C for up to a week. For long-term storage, aliquot and store at -20°C or below. Storage in frost free freezers is not recommended. Avoid repeated freeze/thaw cycles. Suggest spin the vial prior to opening. The antibody solution should be gently mixed before use.
Note	For laboratory research only, not for drug, diagnostic or other use.

Bioinformation

Gene Symbol	VAMP7
Gene Full Name	vesicle-associated membrane protein 7
Background	This gene encodes a transmembrane protein that is a member of the soluble N-ethylmaleimide-sensitive factor attachment protein receptor (SNARE) family. The encoded protein localizes to late endosomes and lysosomes and is involved in the fusion of transport vesicles to their target membranes. Alternate splicing results in multiple transcript variants.[provided by RefSeq, Jun 2010]
Function	Involved in the targeting and/or fusion of transport vesicles to their target membrane during transport of proteins from the early endosome to the lysosome. Required for heterotypic fusion of late endosomes with lysosomes and homotypic lysosomal fusion. Required for calcium regulated lysosomal exocytosis. Involved in the export of chylomicrons from the endoplasmic reticulum to the cis Golgi. Required for exocytosis of mediators during eosinophil and neutrophil degranulation, and target cell killing by natural killer cells. Required for focal exocytosis of late endocytic vesicles during phagosome formation. [UniProt]
Calculated Mw	25 kDa
Cellular Localization	Cytoplasmic vesicle, secretory vesicle membrane; Single-pass type IV membrane protein. Golgi apparatus, trans-Golgi network membrane; Single-pass type IV membrane protein. Late endosome membrane; Single-pass type IV membrane protein. Lysosome membrane; Single-pass type IV membrane protein. Endoplasmic reticulum membrane; Single-pass type IV membrane protein. Cytoplasmic vesicle, phagosome membrane; Single-pass type IV membrane protein. Cell junction, synapse, synaptosome. [UniProt]

Images



ARG59112 anti-VAMP7 / SYBL1 antibody WB image

Western blot: Rat liver and HeLa lysates stained with ARG59112 anti-VAMP7 / SYBL1 antibody at 0.5 µg/ml dilution.