

ARG59115 anti-TIAM1 antibody

Package: 50 µg
Store at: -20°C

Summary

Product Description	Rabbit Polyclonal antibody recognizes TIAM1
Tested Reactivity	Hu
Tested Application	WB
Host	Rabbit
Clonality	Polyclonal
Isotype	IgG
Target Name	TIAM1
Species	Human
Immunogen	Synthetic peptide corresponding to aa. 1518-1554 of Human TIAM1. (ASVDRDLQERLQATSISQREGRKTLDSHASRMAQLK)
Conjugation	Un-conjugated
Alternate Names	TIAM-1; T-lymphoma invasion and metastasis-inducing protein 1

Application Instructions

Application table	Application	Dilution
	WB	0.1 - 0.5 µg/ml
Application Note	* The dilutions indicate recommended starting dilutions and the optimal dilutions or concentrations should be determined by the scientist.	

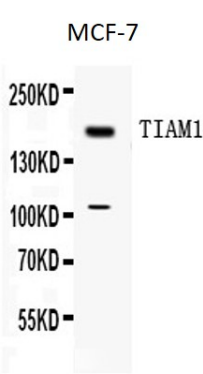
Properties

Form	Liquid
Purification	Affinity purification with immunogen.
Buffer	0.9% NaCl, 0.2% Na ₂ HPO ₄ , 0.05% Sodium azide and 5% BSA.
Preservative	0.05% Sodium azide
Stabilizer	5% BSA
Concentration	0.5 mg/ml
Storage instruction	For continuous use, store undiluted antibody at 2-8°C for up to a week. For long-term storage, aliquot and store at -20°C or below. Storage in frost free freezers is not recommended. Avoid repeated freeze/thaw cycles. Suggest spin the vial prior to opening. The antibody solution should be gently mixed before use.
Note	For laboratory research only, not for drug, diagnostic or other use.

Bioinformation

Gene Symbol	TIAM1
Gene Full Name	T-cell lymphoma invasion and metastasis 1
Function	Modulates the activity of RHO-like proteins and connects extracellular signals to cytoskeletal activities. Acts as a GDP-dissociation stimulator protein that stimulates the GDP-GTP exchange activity of RHO-like GTPases and activates them. Activates RAC1, CDC42, and to a lesser extent RHOA. Required for normal cell adhesion and cell migration. [UniProt]
Calculated Mw	178 kDa
Cellular Localization	Cell junction. Cell membrane; Peripheral membrane protein; Cytoplasmic side. Note=Detected at the boundary between cells with actin-rich protrusions (By similarity). Presence of KRIT1, CDH5 and RAP1B is required for its localization to the cell junction. [UniProt]

Images



ARG59115 anti-TIAM1 antibody WB image

Western blot: MCF-7 cell lysate stained with ARG59115 anti-TIAM1 antibody at 0.5 µg/ml dilution.