

ARG59159 anti-GJC1 / Connexin 45 antibody

Package: 100 µl
Store at: -20°C

Summary

Product Description	Rabbit Polyclonal antibody recognizes GJC1 / Connexin 45
Tested Reactivity	Hu, Ms
Predict Reactivity	Rat
Tested Application	WB
Host	Rabbit
Clonality	Polyclonal
Isotype	IgG
Target Name	GJC1 / Connexin 45
Species	Human
Immunogen	Recombinant fusion protein corresponding to aa. 247-396 of Human GJC1 (NP_005488.2).
Conjugation	Un-conjugated
Alternate Names	Cx45; GJA7; Gap junction gamma-1 protein; CX45; Gap junction alpha-7 protein; Connexin-45

Application Instructions

Application table	Application	Dilution
	WB	1:500 - 1:2000
Application Note	* The dilutions indicate recommended starting dilutions and the optimal dilutions or concentrations should be determined by the scientist.	
Positive Control	SW480	
Observed Size	45 kDa	

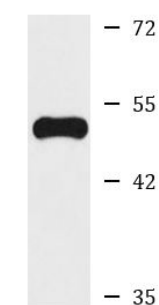
Properties

Form	Liquid
Purification	Affinity purified.
Buffer	PBS (pH 7.3), 0.02% Sodium azide and 50% Glycerol.
Preservative	0.02% Sodium azide
Stabilizer	50% Glycerol
Storage instruction	For continuous use, store undiluted antibody at 2-8°C for up to a week. For long-term storage, aliquot and store at -20°C. Storage in frost free freezers is not recommended. Avoid repeated freeze/thaw cycles. Suggest spin the vial prior to opening. The antibody solution should be gently mixed before use.
Note	For laboratory research only, not for drug, diagnostic or other use.

Bioinformation

Gene Symbol	GJC1
Gene Full Name	gap junction protein, gamma 1, 45kDa
Background	This gene is a member of the connexin gene family. The encoded protein is a component of gap junctions, which are composed of arrays of intercellular channels that provide a route for the diffusion of low molecular weight materials from cell to cell. Alternatively spliced transcript variants encoding the same isoform have been described. [provided by RefSeq, Jul 2008]
Function	One gap junction consists of a cluster of closely packed pairs of transmembrane channels, the connexons, through which materials of low MW diffuse from one cell to a neighboring cell. [UniProt]
Calculated Mw	45 kDa
Cellular Localization	Cell membrane; Multi-pass membrane protein. Cell junction, gap junction. [UniProt]

Images



SW480

ARG59159 anti-GJC1 / Connexin 45 antibody WB image

Western blot: 25 µg of SW480 cell lysate stained with ARG59159 anti-GJC1 / Connexin 45 antibody at 1:1000 dilution.