

## ARG59168 anti-CCDC6 antibody

Package: 100 µl  
Store at: -20°C

### Summary

Product Description	Rabbit Polyclonal antibody recognizes CCDC6
Tested Reactivity	Hu, Ms, Rat
Tested Application	ICC/IF, IHC-P, WB
Host	Rabbit
Clonality	Polyclonal
Isotype	IgG
Target Name	CCDC6
Species	Human
Immunogen	Recombinant fusion protein corresponding to aa. 55-222 of Human CCDC6 (NP_005427.2).
Conjugation	Un-conjugated
Alternate Names	TPC; PTC; D10S170; H4; Papillary thyroid carcinoma-encoded protein; Coiled-coil domain-containing protein 6; Protein H4; TST1

### Application Instructions

Application table	<table> <tr> <th>Application</th><th>Dilution</th></tr> <tr> <td>ICC/IF</td><td>1:50 - 1:200</td></tr> <tr> <td>IHC-P</td><td>1:50 - 1:200</td></tr> <tr> <td>WB</td><td>1:500 - 1:2000</td></tr> </table>	Application	Dilution	ICC/IF	1:50 - 1:200	IHC-P	1:50 - 1:200	WB	1:500 - 1:2000
Application	Dilution								
ICC/IF	1:50 - 1:200								
IHC-P	1:50 - 1:200								
WB	1:500 - 1:2000								
Application Note	* The dilutions indicate recommended starting dilutions and the optimal dilutions or concentrations should be determined by the scientist.								
Positive Control	Jurkat								
Observed Size	~ 68 kDa								

### Properties

Form	Liquid
Purification	Affinity purified.
Buffer	PBS (pH 7.3), 0.02% Sodium azide and 50% Glycerol.
Preservative	0.02% Sodium azide
Stabilizer	50% Glycerol
Storage instruction	For continuous use, store undiluted antibody at 2-8°C for up to a week. For long-term storage, aliquot and store at -20°C. Storage in frost free freezers is not recommended. Avoid repeated freeze/thaw cycles. Suggest spin the vial prior to opening. The antibody solution should be gently mixed before use.

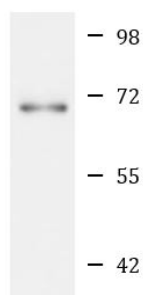
## Note

For laboratory research only, not for drug, diagnostic or other use.

## Bioinformation

Gene Symbol	CCDC6
Gene Full Name	coiled-coil domain containing 6
Background	This gene encodes a coiled-coil domain-containing protein. The encoded protein is ubiquitously expressed and may function as a tumor suppressor. A chromosomal rearrangement resulting in the expression of a fusion gene containing a portion of this gene and the intracellular kinase-encoding domain of the ret proto-oncogene is the cause of thyroid papillary carcinoma.[provided by RefSeq, Sep 2010]
Calculated Mw	53 kDa
Cellular Localization	Cytoplasm. Cytoplasm, cytoskeleton. Note=May be a cytoskeletal protein. [UniProt]

## Images



Jurkat

ARG59168 anti-CCDC6 antibody WB image

Western blot: 25 µg of Jurkat cell lysate stained with ARG59168 anti-CCDC6 antibody at 1:1000 dilution.