

ARG59198 anti-Laminin antibody

Package: 50 µg
Store at: -20°C

Summary

Product Description	Rabbit Polyclonal antibody recognizes Laminin
Tested Reactivity	Hu, Ms, Rat
Tested Application	IHC-P, WB
Specificity	The antibody reacts to Laminin gamma 1, 2 and 3.
Host	Rabbit
Clonality	Polyclonal
Isotype	IgG
Target Name	Laminin
Species	Human
Immunogen	Peptide mixture of laminin gamma 1, 2, 3 (NKLNEIEGSLNKAKDEMKA; DLEERVRRQRNHLHLLLETSI; LQLDSHGALHHKLRQLEES).
Conjugation	Un-conjugated
Alternate Names	Laminin subunit gamma-1; Laminin-6 subunit gamma; S-LAM gamma; Laminin-7 subunit gamma; Laminin-2 subunit gamma; Laminin-8 subunit gamma; Laminin-3 subunit gamma; Laminin-10 subunit gamma; Laminin-1 subunit gamma; S-laminin subunit gamma; Laminin B2 chain; Laminin-9 subunit gamma; Laminin-11 subunit gamma; LAMB2; Laminin-4 subunit gamma

Application Instructions

Application table	Application	Dilution
	IHC-P	0.5 - 1 µg/ml
	WB	0.1 - 0.5 µg/ml
Application Note	IHC-P: Antigen Retrieval: Heat mediated was performed in Citrate buffer (pH 6.0) for 20 min. * The dilutions indicate recommended starting dilutions and the optimal dilutions or concentrations should be determined by the scientist.	

Properties

Form	Liquid
Purification	Affinity purification with immunogen.
Buffer	0.9% NaCl, 0.2% Na ₂ HPO ₄ , 0.05% Sodium azide and 5% BSA.
Preservative	0.05% Sodium azide
Stabilizer	5% BSA
Concentration	0.5 mg/ml
Storage instruction	For continuous use, store undiluted antibody at 2-8°C for up to a week. For long-term storage, aliquot

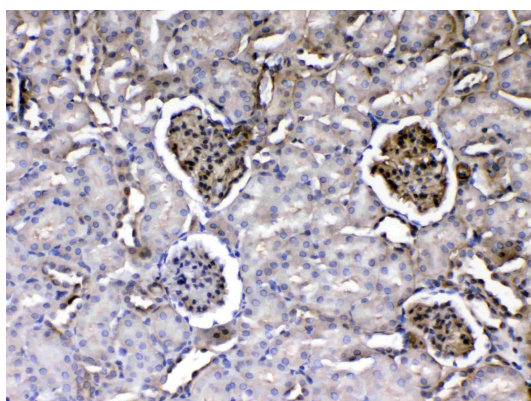
and store at -20°C or below. Storage in frost free freezers is not recommended. Avoid repeated freeze/thaw cycles. Suggest spin the vial prior to opening. The antibody solution should be gently mixed before use.

Note For laboratory research only, not for drug, diagnostic or other use.

Bioinformation

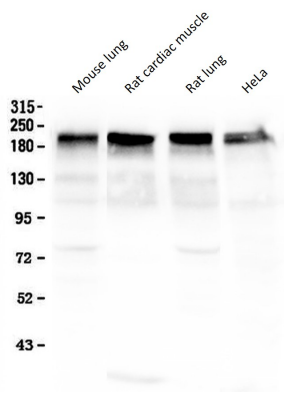
Gene Symbol	LAMC1
Gene Full Name	laminin, gamma 1 (formerly LAMB2)
Background	<p>Laminins, a family of extracellular matrix glycoproteins, are the major noncollagenous constituent of basement membranes. They have been implicated in a wide variety of biological processes including cell adhesion, differentiation, migration, signaling, neurite outgrowth and metastasis. Laminins, composed of 3 non identical chains: laminin alpha, beta and gamma (formerly A, B1, and B2, respectively), have a cruciform structure consisting of 3 short arms, each formed by a different chain, and a long arm composed of all 3 chains. Each laminin chain is a multidomain protein encoded by a distinct gene. Several isoforms of each chain have been described. Different alpha, beta and gamma chain isomers combine to give rise to different heterotrimeric laminin isoforms which are designated by Arabic numerals in the order of their discovery, i.e. alpha1beta1gamma1 heterotrimer is laminin 1. The biological functions of the different chains and trimer molecules are largely unknown, but some of the chains have been shown to differ with respect to their tissue distribution, presumably reflecting diverse functions in vivo. This gene encodes the gamma chain isoform laminin, gamma 1. The gamma 1 chain, formerly thought to be a beta chain, contains structural domains similar to beta chains, however, lacks the short alpha region separating domains I and II. The structural organization of this gene also suggested that it had diverged considerably from the beta chain genes. Embryos of transgenic mice in which both alleles of the gamma 1 chain gene were inactivated by homologous recombination, lacked basement membranes, indicating that laminin, gamma 1 chain is necessary for laminin heterotrimer assembly. It has been inferred by analogy with the strikingly similar 3' UTR sequence in mouse laminin gamma 1 cDNA, that multiple polyadenylation sites are utilized in human to generate the 2 different sized mRNAs (5.5 and 7.5 kb) seen on Northern analysis. [provided by RefSeq, Aug 2011]</p>
Function	<p>Binding to cells via a high affinity receptor, laminin is thought to mediate the attachment, migration and organization of cells into tissues during embryonic development by interacting with other extracellular matrix components. [UniProt]</p>
Calculated Mw	178 kDa
Cellular Localization	Secreted, extracellular space, extracellular matrix, basement membrane. [UniProt]

Images



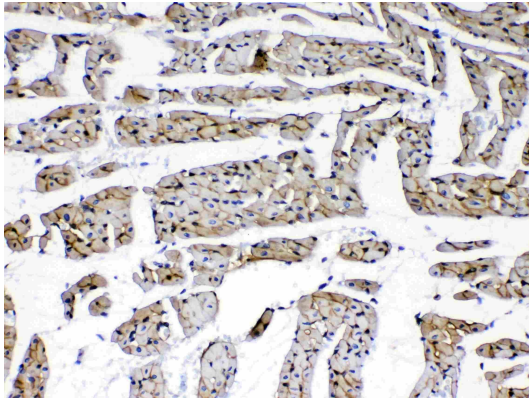
ARG59198 anti-Laminin antibody IHC-P image

Immunohistochemistry: Paraffin-embedded Rat kidney tissue.
Antigen Retrieval: Heat mediated was performed in Citrate buffer (pH 6.0, epitope retrieval solution) for 20 min. The tissue section was blocked with 10% goat serum. The tissue section was then stained with ARG59198 anti-Laminin antibody at 1 µg/ml dilution, overnight at 4°C.



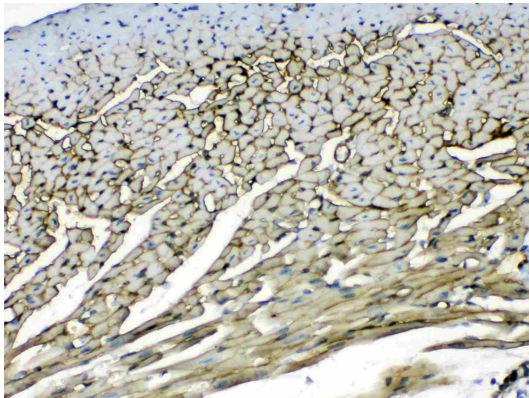
ARG59198 anti-Laminin antibody WB image

Western blot: 50 µg of samples under reducing conditions. Mouse lung, Rat cardiac muscle, Rat lung and HeLa whole cell lysate stained with ARG59198 anti-Laminin antibody at 0.5 µg/ml, overnight at 4°C.



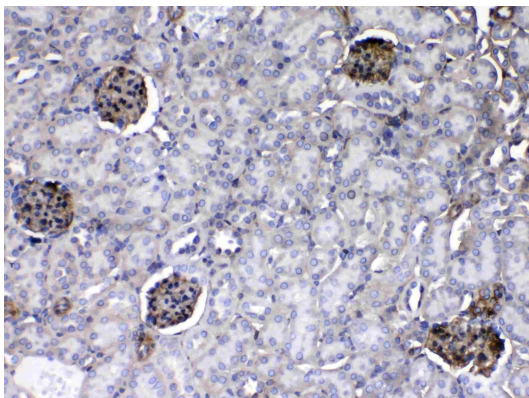
ARG59198 anti-Laminin antibody IHC-P image

Immunohistochemistry: Paraffin-embedded Rat cardiac muscle tissue. Antigen Retrieval: Heat mediated was performed in Citrate buffer (pH 6.0, epitope retrieval solution) for 20 min. The tissue section was blocked with 10% goat serum. The tissue section was then stained with ARG59198 anti-Laminin antibody at 1 µg/ml dilution, overnight at 4°C.



ARG59198 anti-Laminin antibody IHC-P image

Immunohistochemistry: Paraffin-embedded Mouse heart tissue. Antigen Retrieval: Heat mediated was performed in Citrate buffer (pH 6.0, epitope retrieval solution) for 20 min. The tissue section was blocked with 10% goat serum. The tissue section was then stained with ARG59198 anti-Laminin antibody at 1 µg/ml dilution, overnight at 4°C.



ARG59198 anti-Laminin antibody IHC-P image

Immunohistochemistry: Paraffin-embedded Mouse kidney tissue. Antigen Retrieval: Heat mediated was performed in Citrate buffer (pH 6.0, epitope retrieval solution) for 20 min. The tissue section was blocked with 10% goat serum. The tissue section was then stained with ARG59198 anti-Laminin antibody at 1 µg/ml dilution, overnight at 4°C.