

## ARG59202 anti-CCP110 / Cep110 antibody

Package: 50 µg  
Store at: -20°C

### Summary

Product Description	Rabbit Polyclonal antibody recognizes CCP110 / Cep110
Tested Reactivity	Hu, Ms, Rat
Tested Application	IHC-P, WB
Host	Rabbit
Clonality	Polyclonal
Isotype	IgG
Target Name	CCP110 / Cep110
Species	Human
Immunogen	Recombinant protein corresponding to E51-H284 of Human CCP110 / Cep110.
Conjugation	Un-conjugated
Alternate Names	CP110; Centriolar coiled-coil protein of 110 kDa; Cep110; Centrosomal protein of 110 kDa

### Application Instructions

Application table	Application	Dilution
	IHC-P	0.5 - 1 µg/ml
	WB	0.1 - 0.5 µg/ml
Application Note	IHC-P: Antigen Retrieval: Heat mediated was performed in Citrate buffer (pH 6.0) for 20 min. * The dilutions indicate recommended starting dilutions and the optimal dilutions or concentrations should be determined by the scientist.	

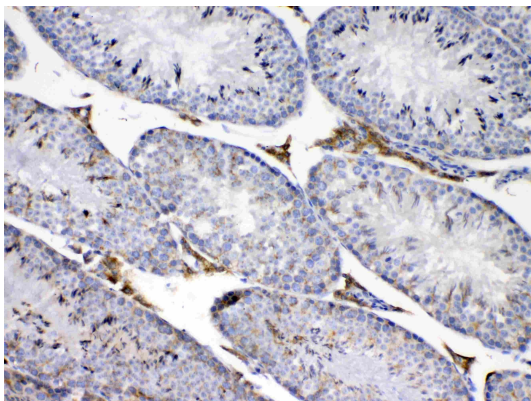
### Properties

Form	Liquid
Purification	Affinity purification with immunogen.
Buffer	0.9% NaCl, 0.2% Na <sub>2</sub> HPO <sub>4</sub> , 0.05% Sodium azide and 4% Trehalose.
Preservative	0.05% Sodium azide
Stabilizer	4% Trehalose
Concentration	0.5 mg/ml
Storage instruction	For continuous use, store undiluted antibody at 2-8°C for up to a week. For long-term storage, aliquot and store at -20°C or below. Storage in frost free freezers is not recommended. Avoid repeated freeze/thaw cycles. Suggest spin the vial prior to opening. The antibody solution should be gently mixed before use.
Note	For laboratory research only, not for drug, diagnostic or other use.

Bioinformation

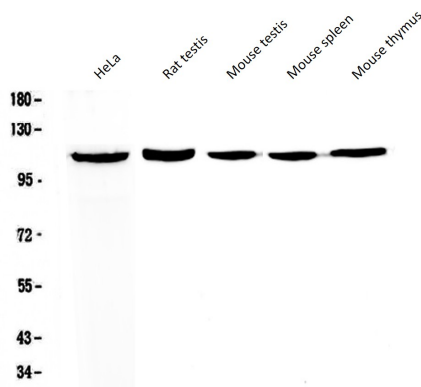
Gene Symbol	CCP110
Gene Full Name	centriolar coiled coil protein 110kDa
Function	Necessary for centrosome duplication at different stages of procentriole formation. Acts as a key negative regulator of ciliogenesis in collaboration with CEP97 by capping the mother centriole thereby preventing cilia formation. Required for correct spindle formation and has a role in regulating cytokinesis and genome stability via cooperation with CALM1 and CETN2. [UniProt]
Calculated Mw	113 kDa
PTM	Phosphorylated by CDKs.  Ubiquitinated by the SCF(CCNF) during G2 phase, leading to its degradation by the proteasome and preventing centrosome reduplication. Deubiquitinated by USP33 in S and G2/M phase, leading to stabilize CCP110 during the period which centrioles duplicate and elongate. [UniProt]
Cellular Localization	Cytoplasm, cytoskeleton, microtubule organizing center, centrosome, centriole. Cytoplasm, cytoskeleton, microtubule organizing center, centrosome. Cytoplasm, cytoskeleton, cilium basal body. Note=Recruited early and then associates with the growing distal tips. Recruited to the mother centriole by KIF24. [UniProt]

Images



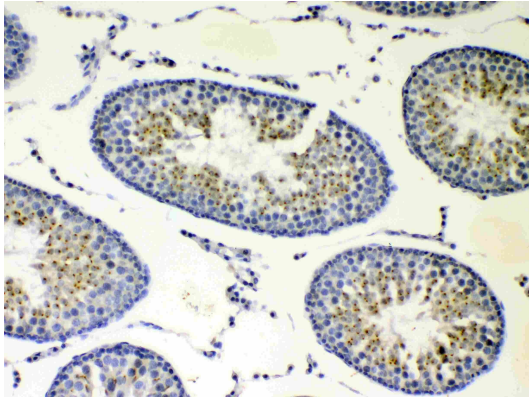
ARG59202 anti-CCP110 / Cep110 antibody IHC-P image

Immunohistochemistry: Paraffin-embedded Mouse testis tissue. Antigen Retrieval: Heat mediated was performed in Citrate buffer (pH 6.0, epitope retrieval solution) for 20 min. The tissue section was blocked with 10% goat serum. The tissue section was then stained with ARG59202 anti-CCP110 / Cep110 antibody at 1 µg/ml dilution, overnight at 4°C.



ARG59202 anti-CCP110 / Cep110 antibody WB image

Western blot: 50 µg of samples under reducing conditions. HeLa, Rat testis, Mouse testis, Mouse spleen and Mouse thymus lysates stained with ARG59202 anti-CCP110 / Cep110 antibody at 0.5 µg/ml, overnight at 4°C.



ARG59202 anti-CCP110 / Cep110 antibody IHC-P image

Immunohistochemistry: Paraffin-embedded Rat testis tissue.  
Antigen Retrieval: Heat mediated was performed in Citrate buffer (pH 6.0, epitope retrieval solution) for 20 min. The tissue section was blocked with 10% goat serum. The tissue section was then stained with ARG59202 anti-CCP110 / Cep110 antibody at 1 µg/ml dilution, overnight at 4°C.