

ARG59205 anti-GJC1 / Connexin 45 antibody

Package: 50 µg
Store at: -20°C

Summary

Product Description	Rabbit Polyclonal antibody recognizes GJC1 / Connexin 45
Tested Reactivity	Hu, Ms, Rat
Tested Application	IHC-P
Host	Rabbit
Clonality	Polyclonal
Isotype	IgG
Target Name	GJC1 / Connexin 45
Species	Human
Immunogen	Synthetic peptide corresponding to aa. 91-131 of Human GJC1 / Connexin 45. (YLGYAIHKIAKMEHGEADKKAARSKPYAMRWKQHRALEETE)
Conjugation	Un-conjugated
Alternate Names	Cx45; GJA7; Gap junction gamma-1 protein; CX45; Gap junction alpha-7 protein; Connexin-45

Application Instructions

Application table	Application	Dilution
	IHC-P	0.5 - 1 µg/ml
Application Note	IHC-P: Antigen Retrieval: Heat mediated was performed in Citrate buffer (pH 6.0) for 20 min. * The dilutions indicate recommended starting dilutions and the optimal dilutions or concentrations should be determined by the scientist.	

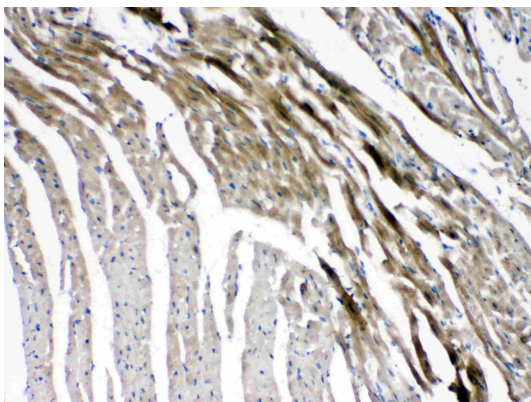
Properties

Form	Liquid
Purification	Affinity purification with immunogen.
Buffer	0.9% NaCl, 0.2% Na ₂ HPO ₄ , 0.05% Sodium azide and 5% BSA.
Preservative	0.05% Sodium azide
Stabilizer	5% BSA
Concentration	0.5 mg/ml
Storage instruction	For continuous use, store undiluted antibody at 2-8°C for up to a week. For long-term storage, aliquot and store at -20°C or below. Storage in frost free freezers is not recommended. Avoid repeated freeze/thaw cycles. Suggest spin the vial prior to opening. The antibody solution should be gently mixed before use.
Note	For laboratory research only, not for drug, diagnostic or other use.

Bioinformation

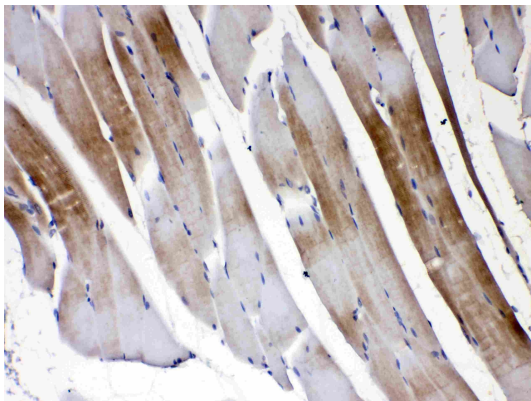
Gene Symbol	GJC1
Gene Full Name	gap junction protein, gamma 1, 45kDa
Background	This gene is a member of the connexin gene family. The encoded protein is a component of gap junctions, which are composed of arrays of intercellular channels that provide a route for the diffusion of low molecular weight materials from cell to cell. Alternatively spliced transcript variants encoding the same isoform have been described. [provided by RefSeq, Jul 2008]
Function	One gap junction consists of a cluster of closely packed pairs of transmembrane channels, the connexons, through which materials of low MW diffuse from one cell to a neighboring cell. [UniProt]
Calculated Mw	45 kDa
Cellular Localization	Cell membrane; Multi-pass membrane protein. Cell junction, gap junction. [UniProt]

Images



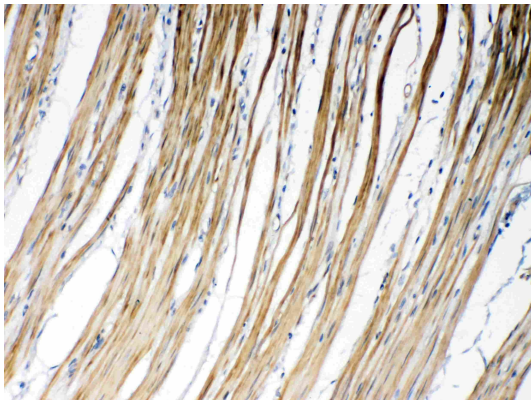
ARG59205 anti-GJC1 / Connexin 45 antibody IHC-P image

Immunohistochemistry: Paraffin-embedded Mouse cardiac muscle tissue. Antigen Retrieval: Heat mediated was performed in Citrate buffer (pH 6.0, epitope retrieval solution) for 20 min. The tissue section was blocked with 10% goat serum. The tissue section was then stained with ARG59205 anti-GJC1 / Connexin 45 antibody at 1 µg/ml dilution, overnight at 4°C.



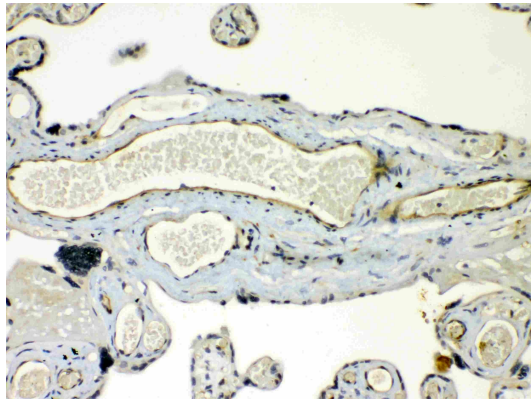
ARG59205 anti-GJC1 / Connexin 45 antibody IHC-P image

Immunohistochemistry: Paraffin-embedded Rat skeletal muscle tissue. Antigen Retrieval: Heat mediated was performed in Citrate buffer (pH 6.0, epitope retrieval solution) for 20 min. The tissue section was blocked with 10% goat serum. The tissue section was then stained with ARG59205 anti-GJC1 / Connexin 45 antibody at 1 µg/ml dilution, overnight at 4°C.



ARG59205 anti-GJC1 / Connexin 45 antibody IHC-P image

Immunohistochemistry: Paraffin-embedded Human intestinal cancer tissue. Antigen Retrieval: Heat mediated was performed in Citrate buffer (pH 6.0, epitope retrieval solution) for 20 min. The tissue section was blocked with 10% goat serum. The tissue section was then stained with ARG59205 anti-GJC1 / Connexin 45 antibody at 1 µg/ml dilution, overnight at 4°C.



ARG59205 anti-GJC1 / Connexin 45 antibody IHC-P image

Immunohistochemistry: Paraffin-embedded Human placenta tissue. Antigen Retrieval: Heat mediated was performed in Citrate buffer (pH 6.0, epitope retrieval solution) for 20 min. The tissue section was blocked with 10% goat serum. The tissue section was then stained with ARG59205 anti-GJC1 / Connexin 45 antibody at 1 µg/ml dilution, overnight at 4°C.