

ARG59217 anti-ABI1 / SSH3BP1 antibody

Package: 50 µg
Store at: -20°C

Summary

Product Description	Rabbit Polyclonal antibody recognizes ABI1 / SSH3BP1
Tested Reactivity	Hu, Ms, Rat
Predict Reactivity	Hm
Tested Application	FACS, IHC-P, WB
Host	Rabbit
Clonality	Polyclonal
Isotype	IgG
Target Name	ABI1 / SSH3BP1
Species	Human
Immunogen	Synthetic peptide corresponding to aa. 151-175 of Human ABI1 / SSH3BP1. (HGVKWLKAKHGNNQPARTGTLSTN)
Conjugation	Un-conjugated
Alternate Names	e3B1; Abl-binding protein 4; ABLBP4; Abl interactor 1; Nap1-binding protein; AblBP4; Eps8-binding protein; ABI-1; Abi-1; SSH3BP; E3B1; NAP1BP; Spectrin SH3 domain-binding protein; Eps8 SH3 domain-binding protein; Nap1BP; Abelson interactor 1; SSH3BP1

Application Instructions

Application table	Application	Dilution
	FACS	1 - 3 µg/10 ⁶ cells
	IHC-P	0.5 - 1 µg/ml
	WB	0.1 - 0.5 µg/ml
	Application Note	IHC-P: Antigen Retrieval: Heat mediated was performed in Citrate buffer (pH 6.0) for 20 min. * The dilutions indicate recommended starting dilutions and the optimal dilutions or concentrations should be determined by the scientist.

Properties

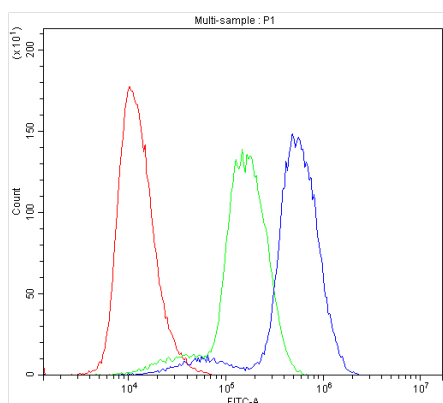
Form	Liquid
Purification	Affinity purification with immunogen.
Buffer	0.9% NaCl, 0.2% Na ₂ HPO ₄ , 0.05% Sodium azide and 5% BSA.
Preservative	0.05% Sodium azide
Stabilizer	5% BSA
Concentration	0.5 mg/ml

Storage instruction	For continuous use, store undiluted antibody at 2-8°C for up to a week. For long-term storage, aliquot and store at -20°C or below. Storage in frost free freezers is not recommended. Avoid repeated freeze/thaw cycles. Suggest spin the vial prior to opening. The antibody solution should be gently mixed before use.
Note	For laboratory research only, not for drug, diagnostic or other use.

Bioinformation

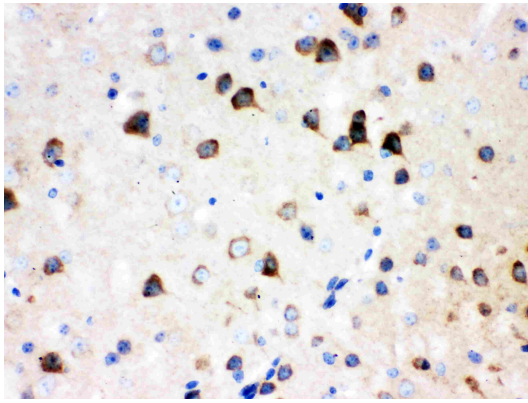
Gene Symbol	ABI1
Gene Full Name	abl-interactor 1
Background	This gene encodes a member of the Abelson-interactor family of adaptor proteins. These proteins facilitate signal transduction as components of several multiprotein complexes, and regulate actin polymerization and cytoskeletal remodeling through interactions with Abelson tyrosine kinases. The encoded protein plays a role in macropinocytosis as a component of the WAVE2 complex, and also forms a complex with EPS8 and SOS1 that mediates signal transduction from Ras to Rac. This gene may play a role in the progression of several malignancies including melanoma, colon cancer and breast cancer, and a t(10;11) chromosomal translocation involving this gene and the MLL gene has been associated with acute myeloid leukemia. Alternatively spliced transcript variants encoding multiple isoforms have been observed for this gene, and a pseudogene of this gene is located on the long arm of chromosome 14. [provided by RefSeq, Sep 2011]
Function	May act in negative regulation of cell growth and transformation by interacting with nonreceptor tyrosine kinases ABL1 and/or ABL2. May play a role in regulation of EGF-induced Erk pathway activation. Involved in cytoskeletal reorganization and EGFR signaling. Together with EPS8 participates in transduction of signals from Ras to Rac. In vitro, a trimeric complex of ABI1, EPS8 and SOS1 exhibits Rac specific guanine nucleotide exchange factor (GEF) activity and ABI1 seems to act as an adapter in the complex. Regulates ABL1/c-Abl-mediated phosphorylation of ENAH. Recruits WASF1 to lamellipodia and there seems to regulate WASF1 protein level. In brain, seems to regulate the dendritic outgrowth and branching as well as to determine the shape and number of synaptic contacts of developing neurons. [UniProt]
Calculated Mw	55 kDa
PTM	Phosphorylated on tyrosine residues after serum stimulation or induction by v-Abl. Seems to be phosphorylated at Tyr-53 by ABL1, required for nuclear but not for synaptic localization. [UniProt]
Cellular Localization	Cytoplasm. Nucleus. Cell projection, lamellipodium. Cell projection, filopodium. Cell projection, growth cone. Cell junction, synapse, postsynaptic cell membrane, postsynaptic density. Cytoplasm, cytoskeleton. Note=Localized to protruding lamellipodia and filopodia tips. Also localized to neuronal growth cones and synaptosomes. May shuttle from the postsynaptic densities to the nucleus (By similarity). [UniProt]

Images



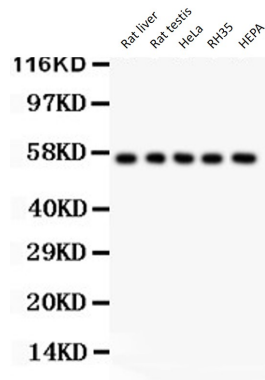
ARG59217 anti-ABI1 / SSH3BP1 antibody FACS image

Flow Cytometry: U937 cells were blocked with 10% normal goat serum and then stained with ARG59217 anti-ABI1 / SSH3BP1 antibody (blue) at 1 ug/10⁶ cells for 30 min at 20°C, followed by DyLight[®]488 labelled secondary antibody. Isotype control antibody (green) was rabbit IgG (1 ug/10⁶ cells) used under the same conditions. Unlabelled sample (red) was also used as a control.



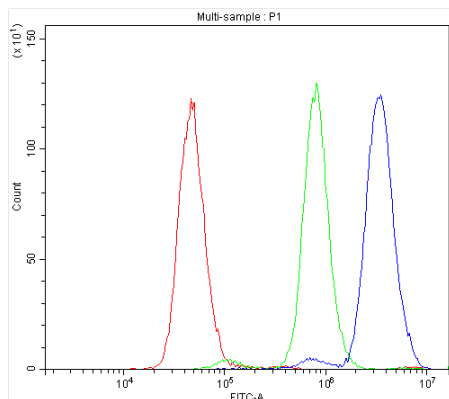
ARG59217 anti-ABI1 / SSH3BP1 antibody IHC-P image

Immunohistochemistry: Paraffin-embedded Mouse brain Tissue. Antigen Retrieval: Heat mediated was performed in Citrate buffer (pH 6.0, epitope retrieval solution) for 20 min. The tissue section was blocked with 10% goat serum. The tissue section was then stained with ARG59217 anti-ABI1 / SSH3BP1 antibody at 1 µg/ml dilution, overnight at 4°C.



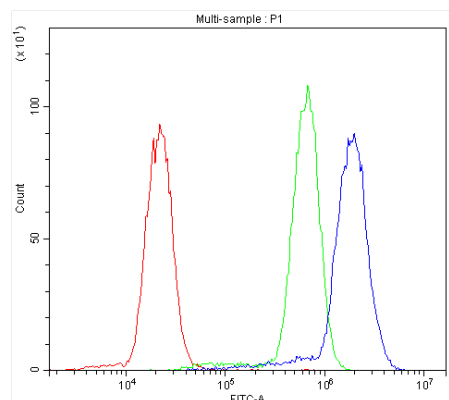
ARG59217 anti-ABI1 / SSH3BP1 antibody WB image

Western blot: 50 µg of samples under reducing conditions. Rat liver, Rat testis, HeLa, RH35 and HEPA lysates stained with ARG59217 anti-ABI1 / SSH3BP1 antibody at 0.5 µg/ml, overnight at 4°C.



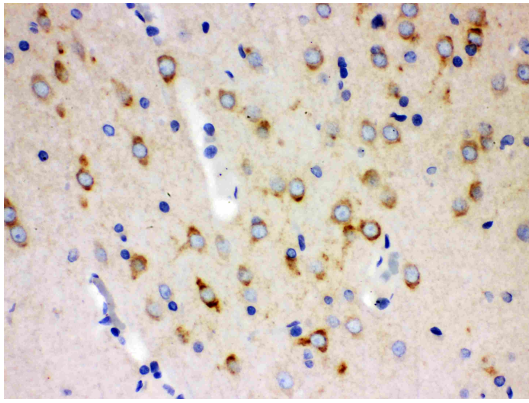
ARG59217 anti-ABI1 / SSH3BP1 antibody FACS image

Flow Cytometry: Neuro-2a cells were blocked with 10% normal goat serum and then stained with ARG59217 anti-ABI1 / SSH3BP1 antibody (blue) at 1 µg/10⁶ cells for 30 min at 20°C, followed by DyLight®488 labelled secondary antibody. Isotype control antibody (green) was rabbit IgG (1 µg/10⁶ cells) used under the same conditions. Unlabelled sample (red) was also used as a control.



ARG59217 anti-ABI1 / SSH3BP1 antibody FACS image

Flow Cytometry: U-87 cells were blocked with 10% normal goat serum and then stained with ARG59217 anti-ABI1 / SSH3BP1 antibody (blue) at 1 µg/10⁶ cells for 30 min at 20°C, followed by DyLight®488 labelled secondary antibody. Isotype control antibody (green) was rabbit IgG (1 µg/10⁶ cells) used under the same conditions. Unlabelled sample (red) was also used as a control.



ARG59217 anti-ABI1 / SSH3BP1 antibody IHC-P image

Immunohistochemistry: Paraffin-embedded Rat brain Tissue.
Antigen Retrieval: Heat mediated was performed in Citrate buffer (pH 6.0, epitope retrieval solution) for 20 min. The tissue section was blocked with 10% goat serum. The tissue section was then stained with ARG59217 anti-ABI1 / SSH3BP1 antibody at 1 µg/ml dilution, overnight at 4°C.